



SHIPPENSBURG
UNIVERSITY



Middle States '08-'09 Kick-Off Meetings

Wednesday Aug. 20

1:30 Spiritual Center Chapel

Tuesday Aug. 26

3:30 CUB Orndorff Theatre





We're
making
Shippensburg
stronger

Who is in the audience?

Less than one year

Newly hired

More than
ten years



One to five years

Five to ten years



Goals of this meeting

1. Define “Middle States”
2. Discuss the accreditation process
3. Persuade campus community to participate in the process
4. Motivate campus community to provide feedback twice this semester



Deadline 1 -- September 1

Deadline 2 – December 15



What is Middle States?

The Middle States Commission on Higher Education is a **voluntary**, non-governmental, **membership association** that defines, maintains, and promotes **educational excellence** across institutions with diverse missions, student populations, and resources. The Commission is dedicated to **quality assurance** and **improvement** through accreditation via **peer evaluation**. Middle States accreditation instills **public confidence** in institutional mission, goals, performance, and resources through its rigorous **accreditation standards** and their enforcement.



--Middle States' Website



What is Middle States?

...a higher education group that we belong to

...that performs peer-evaluation of our self-study

...study of whether we do what we say we do

...and are who we say we are

...thus providing an external “seal of approval”

...part of the continual improvement process



**MIDDLE STATES COMMISSION
ON HIGHER EDUCATION**



Accreditation Standards

Characteristics of Excellence in Higher Education, 2006

Standards 1 to 7: Institutional Context

Standards 8 to 14: Educational Effectiveness

Can download pdf from www.msche.org, click Publications, see *Eligibility Requirements and Standards for Accreditation*



MIDDLE STATES COMMISSION
ON HIGHER EDUCATION



Standards 1 – 7

Institutional Context

1. Mission and Goals
2. Planning, Resource Allocation, and Institutional Renewal
3. Institutional Resources
4. Leadership and Governance
5. Administration
6. Integrity
7. Institutional Assessment



MIDDLE STATES COMMISSION
ON HIGHER EDUCATION



Standards 8-14

Educational Effectiveness

8. Student Admissions and Retention
9. Student Support Services
10. Faculty
11. Educational Offerings
12. General Education
13. Related Educational Activities
- 14. Assessment of Student Learning**



MIDDLE STATES COMMISSION
ON HIGHER EDUCATION

We're
making

Shippensburg

stronger

Accreditation Timelines

Self-Study and Team Visit

- Ten-year cycle
- Our last Self-Study -- 1999
- Ship's first review -- 1939



Periodic Review Report (PRR)

- Between self-studies
- Our last PRR -- 2004



Self-Study Timeline

Academic Year 2007 - 2008

- Conducted survey of faculty, staff, and students about the University (for example, curriculum, housing, policies)
- Formed steering committee
- Divided into work groups
 - Assigned to examine different standards
 - Directed to produce one thematic chapter
- Edited and reviewed for consistency and accuracy



We're
making

Shippensburg

stronger

Self-Study Timeline

Academic Year 2007 - 2008

- Distributed draft to Steering Committee for feedback
- Distributed draft to campus community for feedback
- Incorporated comments and complied second draft during summer



We're
making

Shippensburg

stronger

Self-Study Timeline

Academic Year 2008 -2009

- Distributed second draft for feedback
- Refine second draft and send draft to Team Chair
- Scheduled visit from Team Chair
October 13, 2008
- Incorporate feedback from Team Chair
- Distribute third draft for feedback
- Compile final draft
- Send final draft sent to Team Members



We're
making
Shippensburg
stronger

Self-Study Timeline

Academic Year 2008 -2009

- Scheduled visit from Team
April 5 to April 8, 2009
- Work on recommendations in the report
throughout the academic year
- Await MSCHE report in June 2009





We're
making
Shippensburg
stronger

Self-Study Draft

Report: approximately 100 single-spaced pages, including tables and charts

Additional appendices

-- Our draft is due to the Team Chair in late September.



For additional information, see the .pdf file or the publication: ***Self-Study: Creating a Useful Process & Report (2nd Edition, 2007).***



Self-Study

Organization of Chapters

Strategic Planning: A Process for Institutional Renewal

(Standards 1, 2, 3, and 7)

Leadership Transition, Shared

Governance, and Institutional Integrity

(Standards 4, 5, and 6)

Quality Faculty, Quality Programs,

Discipline-Specific Accreditation

(Standards 10, 11, and 13 (Graduate Programs))





Self-Study

Organization of Chapters

Creating a Diverse, Engaging, and Supportive Learning Community
**(Standards 8, 9, 12, and 13
(Developmental Education))**

Innovation, Outreach, and Economic Development Work Group
(Standard 13)

Student Learning and Development
(Standard 14)





Team Chair Visit

October 13

Introduction of Shippensburg to Dr. Hefner
Meets with:



President
Representatives from Council of Trustees
Key administrative officers
Self-Study Steering Committee
Student and faculty representatives

Dr. Dennis L. Hefner
President, SUNY Fredonia
since 1996



We're
making
Shippensburg
stronger



Dr. Dennis L. Hefner
President, SUNY Fredonia
since 1996

Team Chair Visit

October 13

Process of self-study

Logistics for team visit

Team visit schedule

Logistics of visiting additional
location(s)



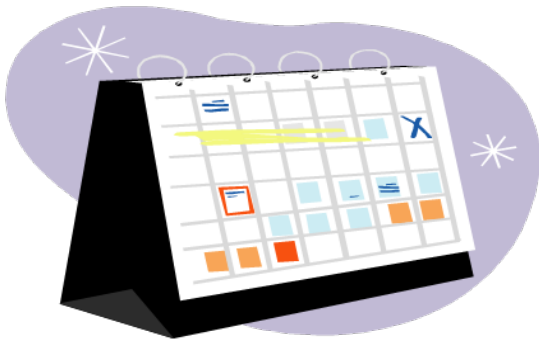
October 13, 2008 to April 5, 2009

Incorporate suggestions by Dr. Hefner
Gather data supporting each assertion
in the Self-Study

Gather supporting documents for
resource room and create
electronic resource room

Mail self-study document and essential
supporting documents (catalog,
faculty handbook, etc.) to team
members

Act on recommendations



We're
making
Shippensburg
stronger

Team Visit

Sunday April 5
through
Wednesday April 8,
2009



Pdf file and title of book *Team Visits: Conducting and Hosting an Evaluation Visit (2006)*



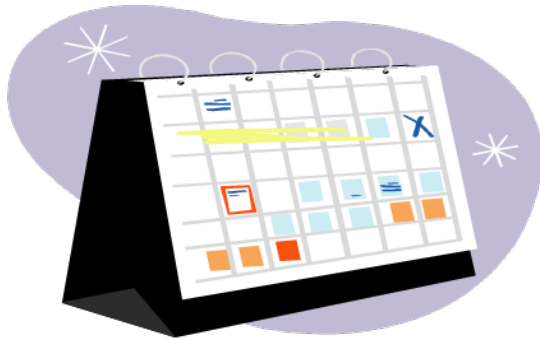
During Team Visit

Meetings with campus community

Preset schedule may be altered –
prepare to be called unexpectedly

Prepare to respond to questions from
team members

Exit session





After Team Visit

Continue with implementation of recommendations

Use information in exit session as necessary

Continue with our sustainable, continuous improvement

Await official results of Self-Study and visit in June 2009





We're
making
Shippensburg
stronger

Follow-up Actions

2006-2007

178 institutions reviewed (94)

80 (45%) follow-up requested 53 (56%)

Types of reports Requested:

Monitoring Reports 35% (55%)

Progress Letters 61% (60%*)

Supplemental Information Reports 4%



'06-'07 values from Spring 2008 MSCHE newsletter

'07-'08 values from IR analysis of info on MSCHE website

* Some schools having both letters and reports



Example Follow-Up Action Posted on MSCHE Website

To reaffirm accreditation and to request a monitoring report, due by March 1, 2010, documenting (1) progress in the development and implementation of a comprehensive and sustained process for the assessment of institutional effectiveness (Standard 7), and (2) the development and implementation of a general education program, including direct evidence of student learning outcomes (Standards 12 and 14). A small team visit may follow the submission of the monitoring report. The Periodic Review Report is due June 1, 2013.



We're
making
Shippensburg
stronger

Follow-up Actions

2006-2007 Areas of Concern

Spring 2008
MSCHE
Newsletter

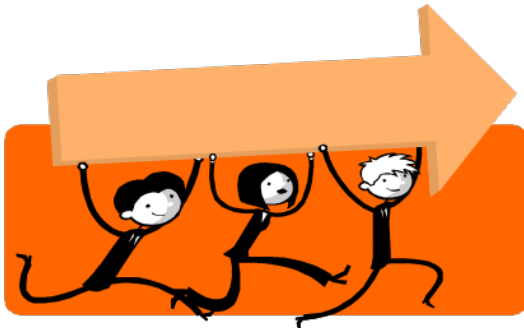
Student Learning	50%
Planning	36%
Institutional Effectiveness	28%
Finances	23%
Enrollment	14%
Faculty	14%
Governance	8%
Curriculum	6%
General Education	5%
Mission	5%



We're
making
Shippensburg
stronger

Why participate in process?

- Direct our future – Who? What? Where? How?
- Participation from every member of the campus community
- Self-Study continues our strategic planning process and guides the University for the next five to ten years





How to participate in process?

- Provide feedback on the second draft by September 1
- Help educate campus community (staff, students, colleagues) on process
- Encourage others to participate (agendas)
- Provide feedback on the third draft by December 15
- Remember: partnerSHIP
- Most recent draft of study on info.ship

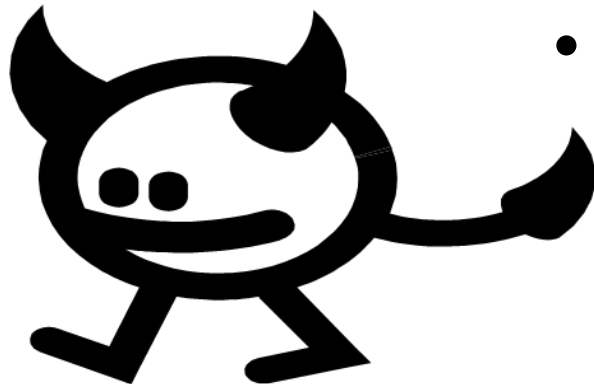




We're
making
Shippensburg
stronger

Feedback

- What is missing?
- Where should the missing information be included?
- Where does the Self-Study need additional analysis?
- Where are we making assertions and not supporting them with data?
- What data are you aware of that we should include?

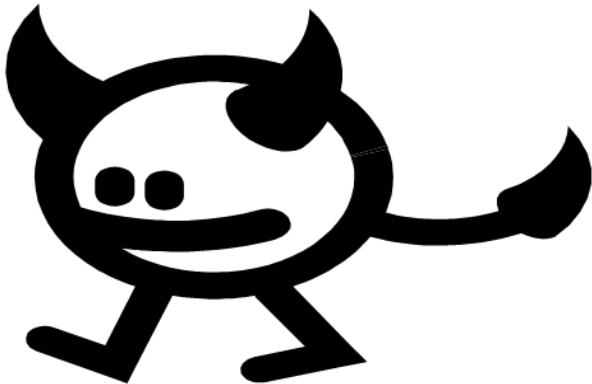


What problems do you identify and what solutions do you propose?



Recommendations

- What ideas for improvement?
- What has your area considered?
- What issues should Shippensburg University address in the next five to ten years?





Feedback

- Who send to?
Sara Grove
Heather Wadas
Tracy Schoolcraft
- How send it?
Prefer e-mail
- When is the deadline?
September 1



Acknowledgments and Thank You!

Rick Ruth
Sara Grove
Heather Wadas
Mark Pilgrim
Marie Hathaway
Susan Stone
Peggy Hockersmith
Mary Lehman
Steering Committee Members

