



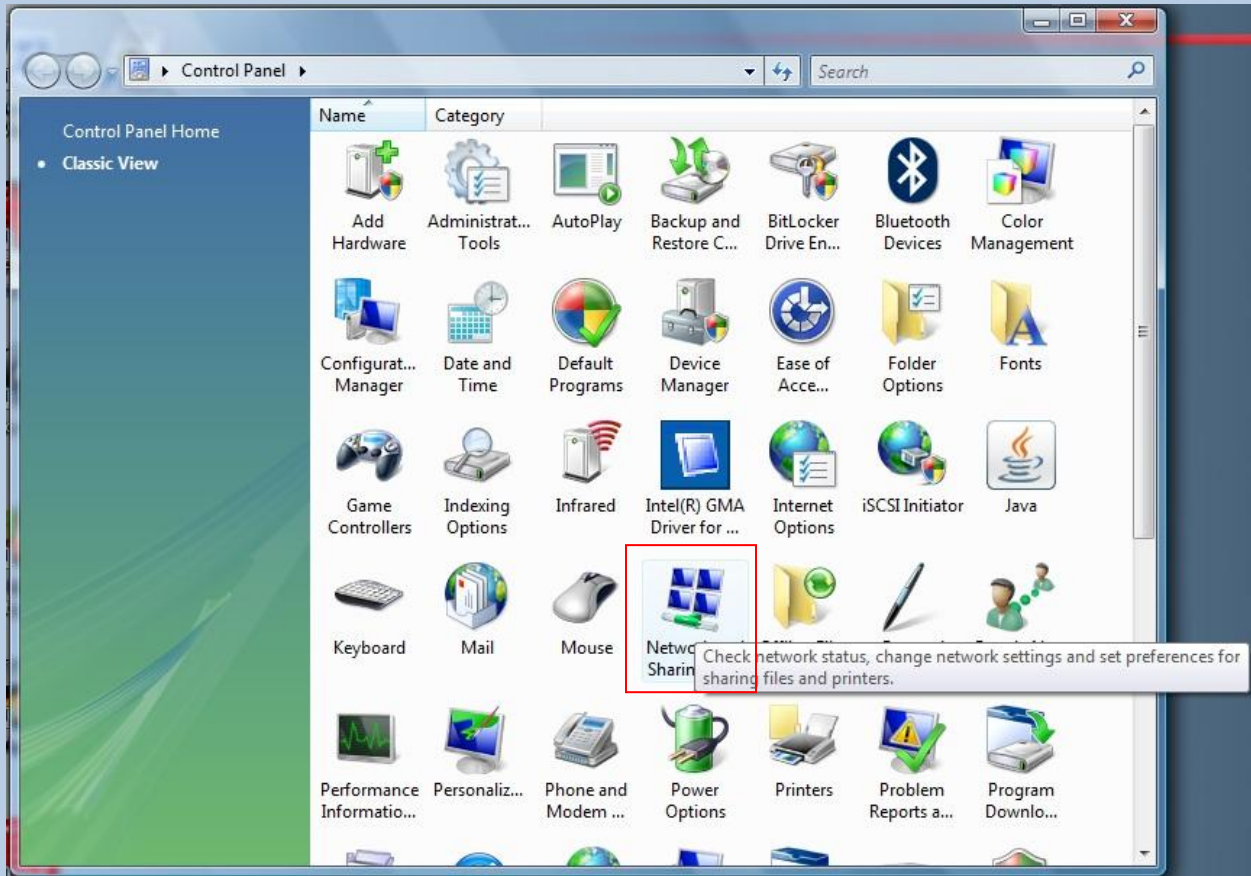
SHIPPENSBURG UNIVERSITY

SU Helpdesk Presents:

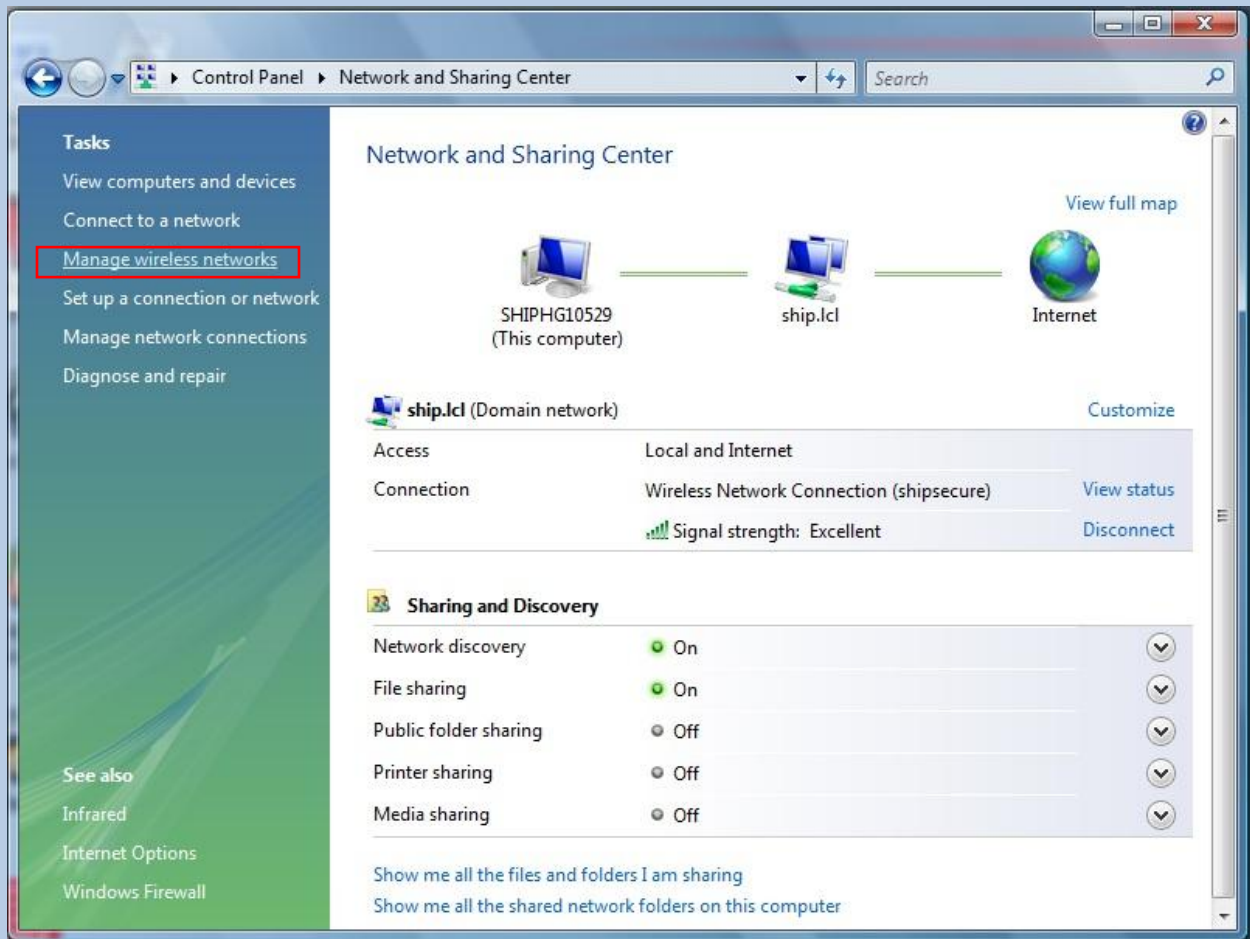
How to Configure Secure Wireless on Your Personal
Machine in Vista



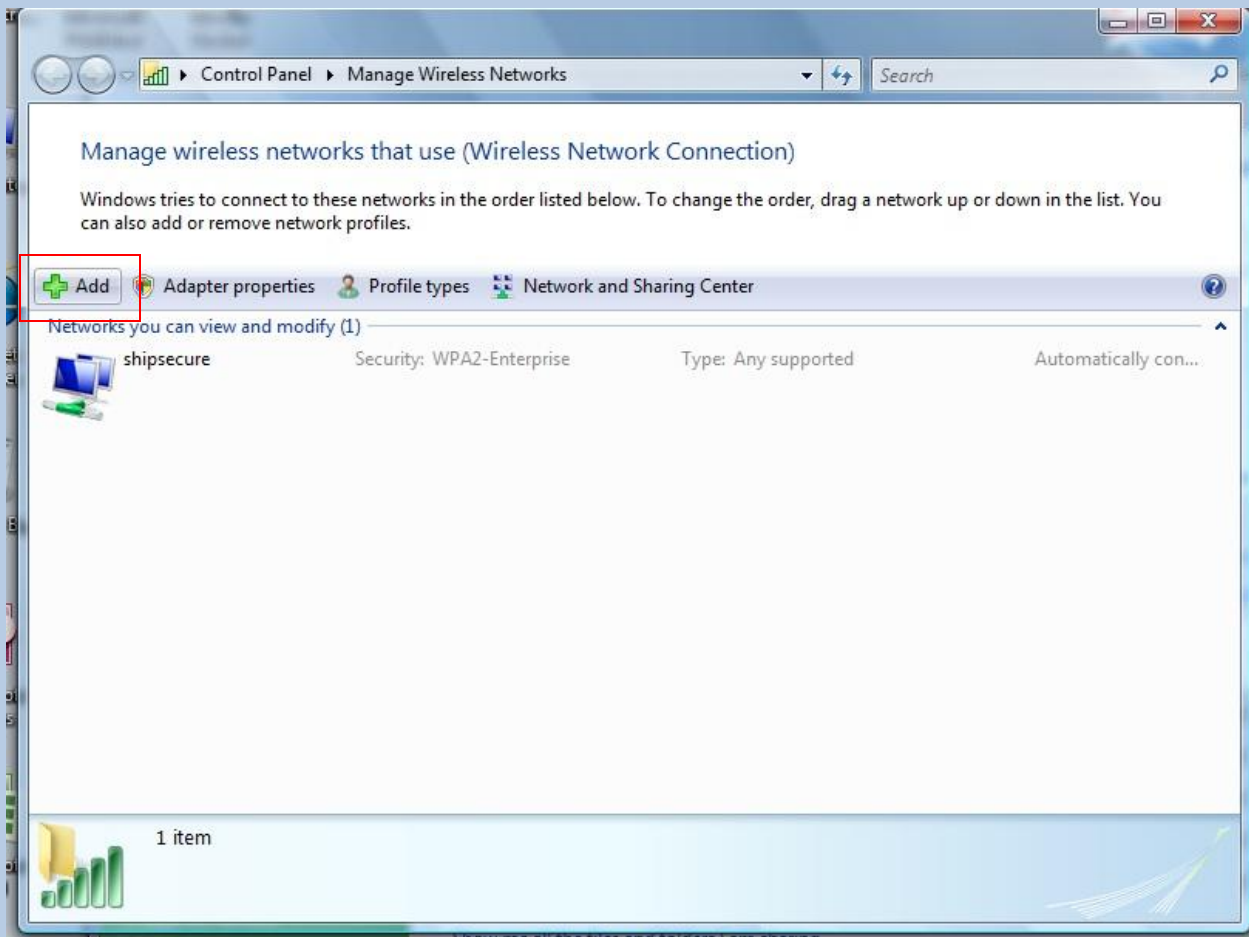
Click on Control Panel.



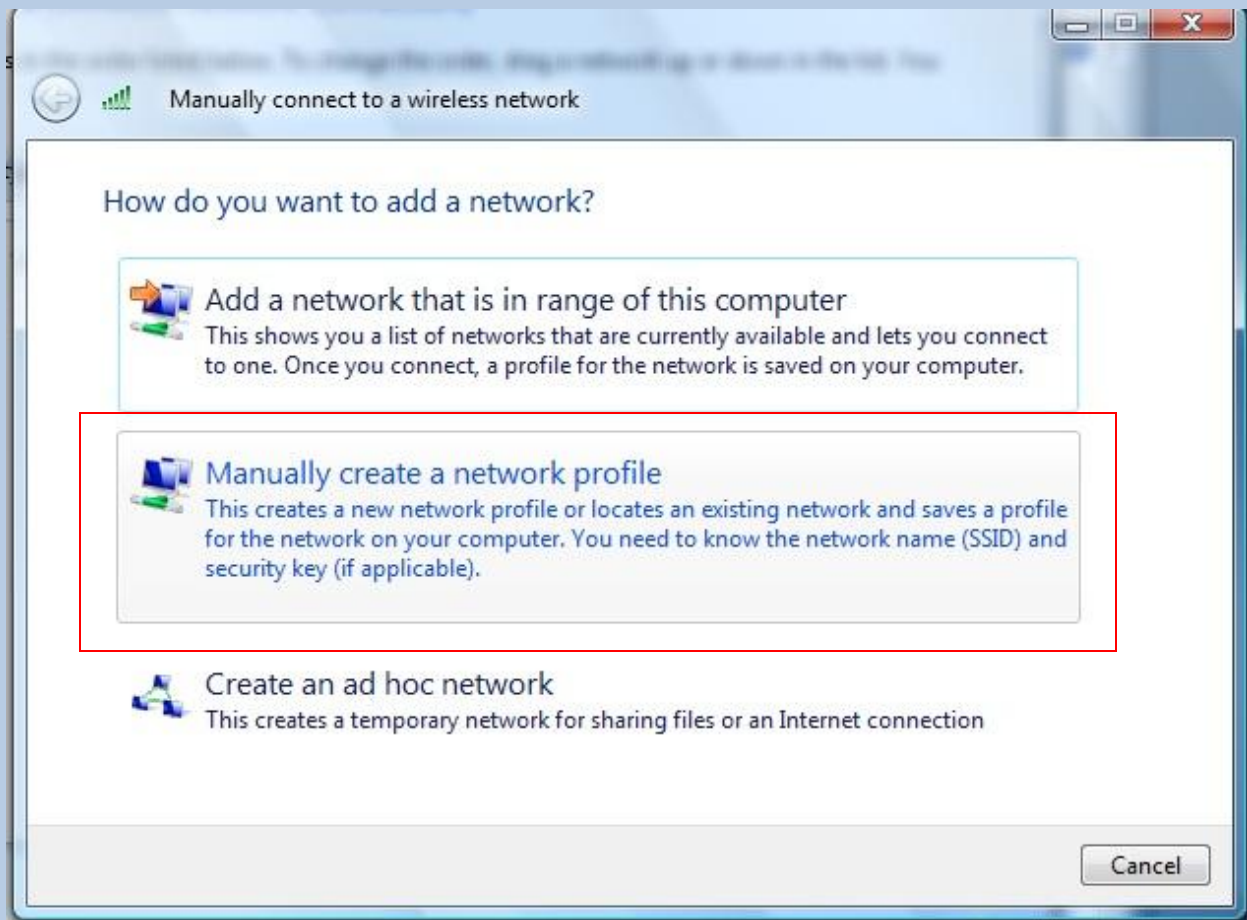
Open Network and Sharing Center



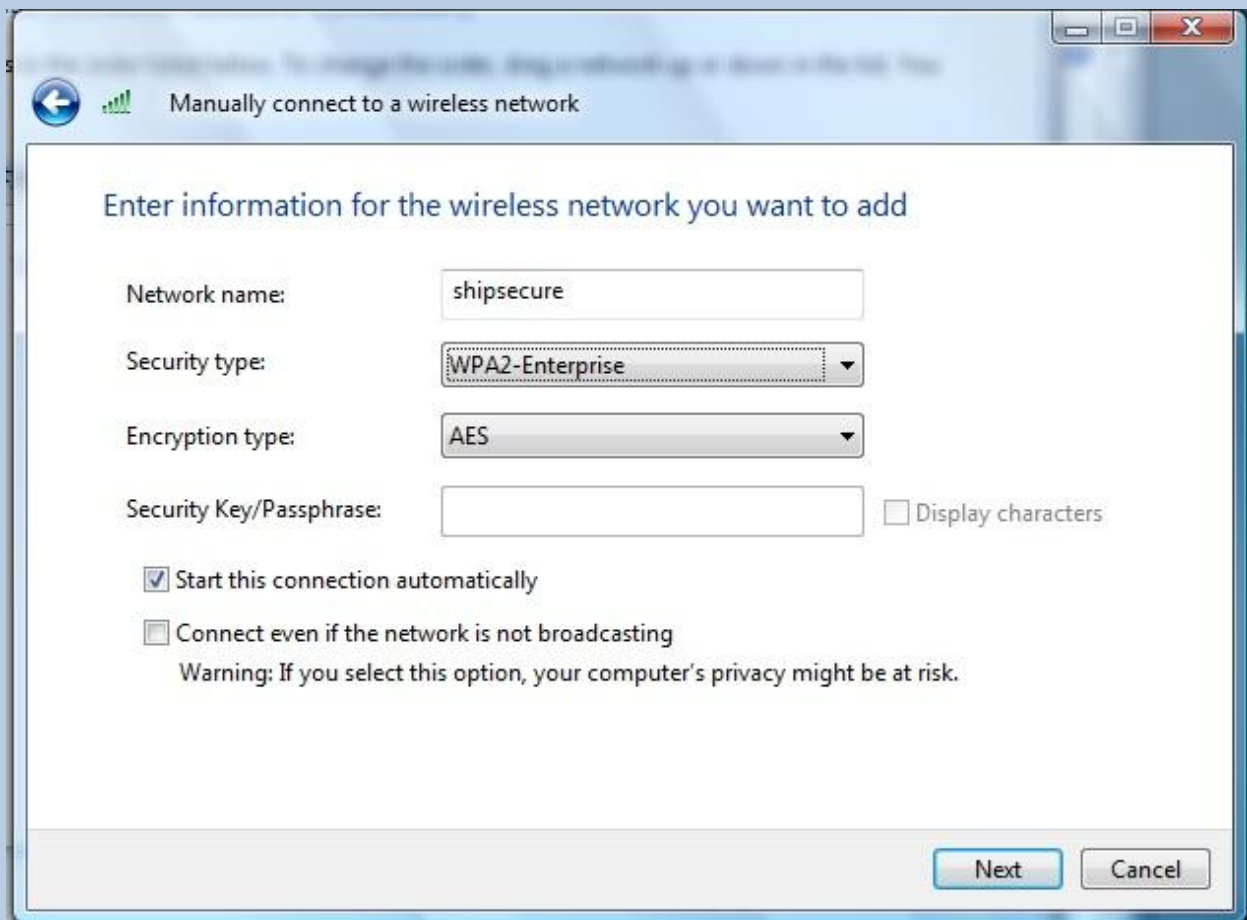
Click Manage wireless networks.



Click "Add" to add a new wireless network.



Click "Manually create a network profile."

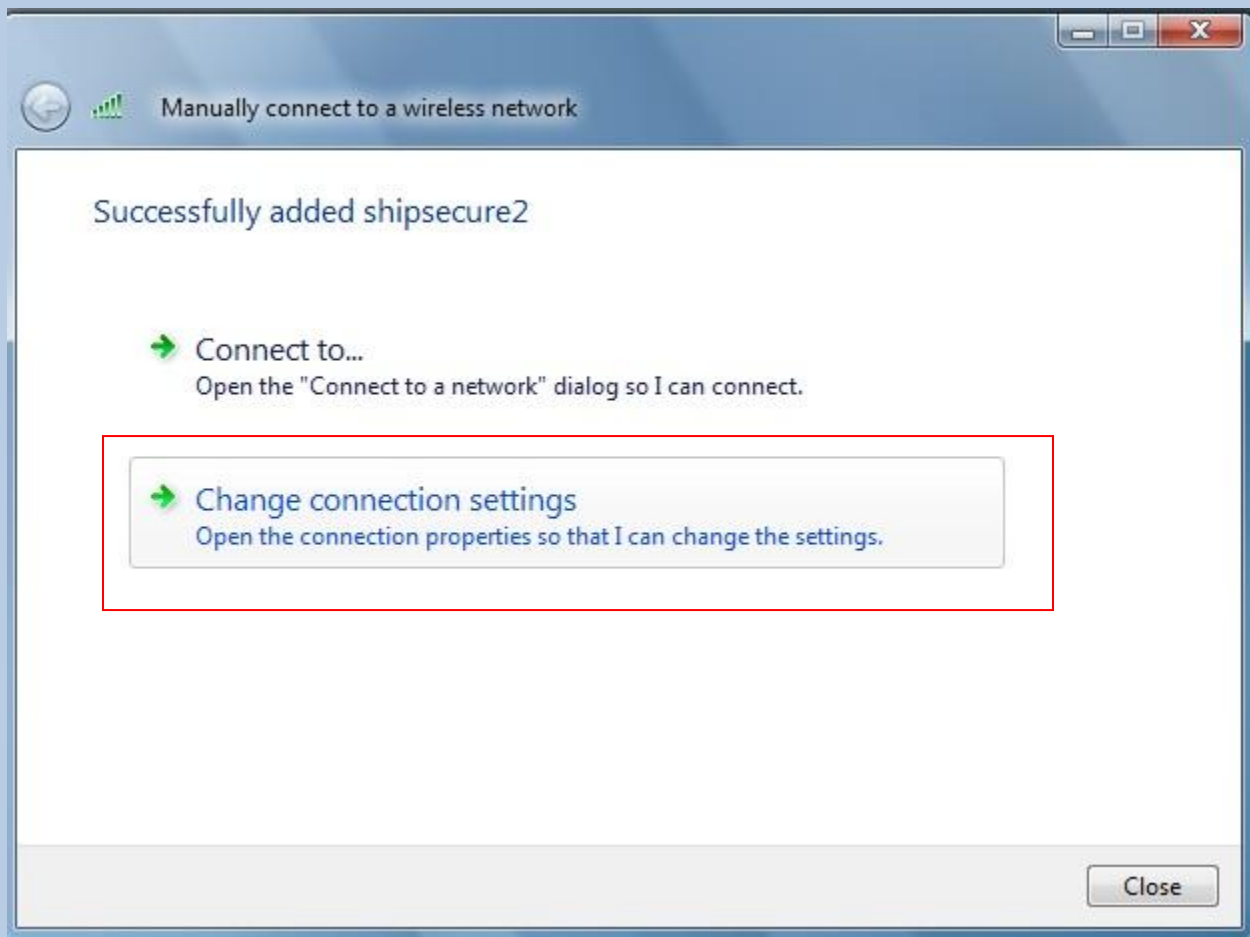


In the "Network name" fillbox, enter "shipsecure" as the network name.

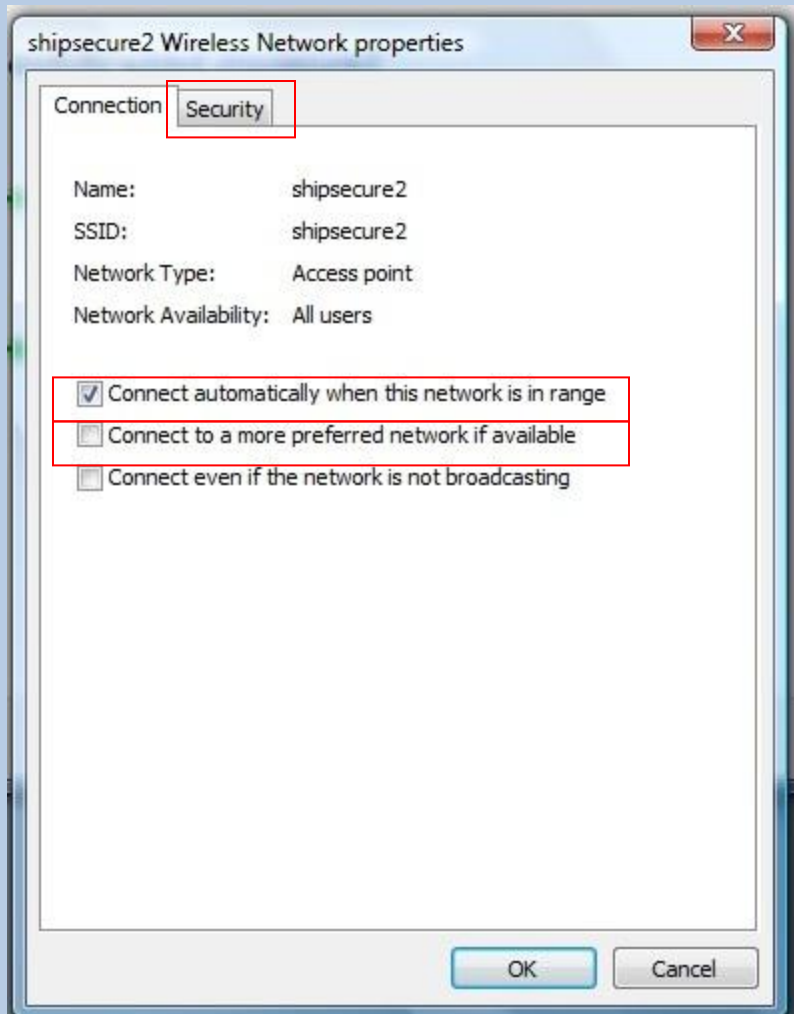
In the "Security type" dropdown box, select "WPA2-Enterprise" as the security type.

In the "Encryption type" dropdown box, select AES as the encryption type.

Check the "Start this connection automatically" checkbox.

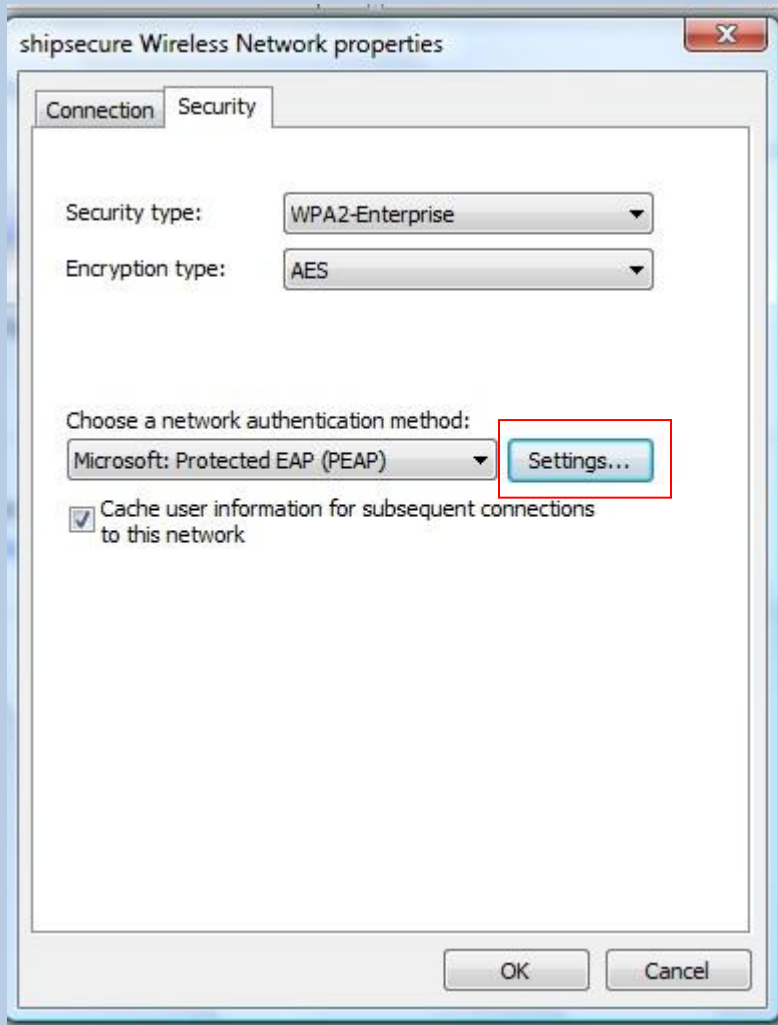


Click the "Change connection settings" option.

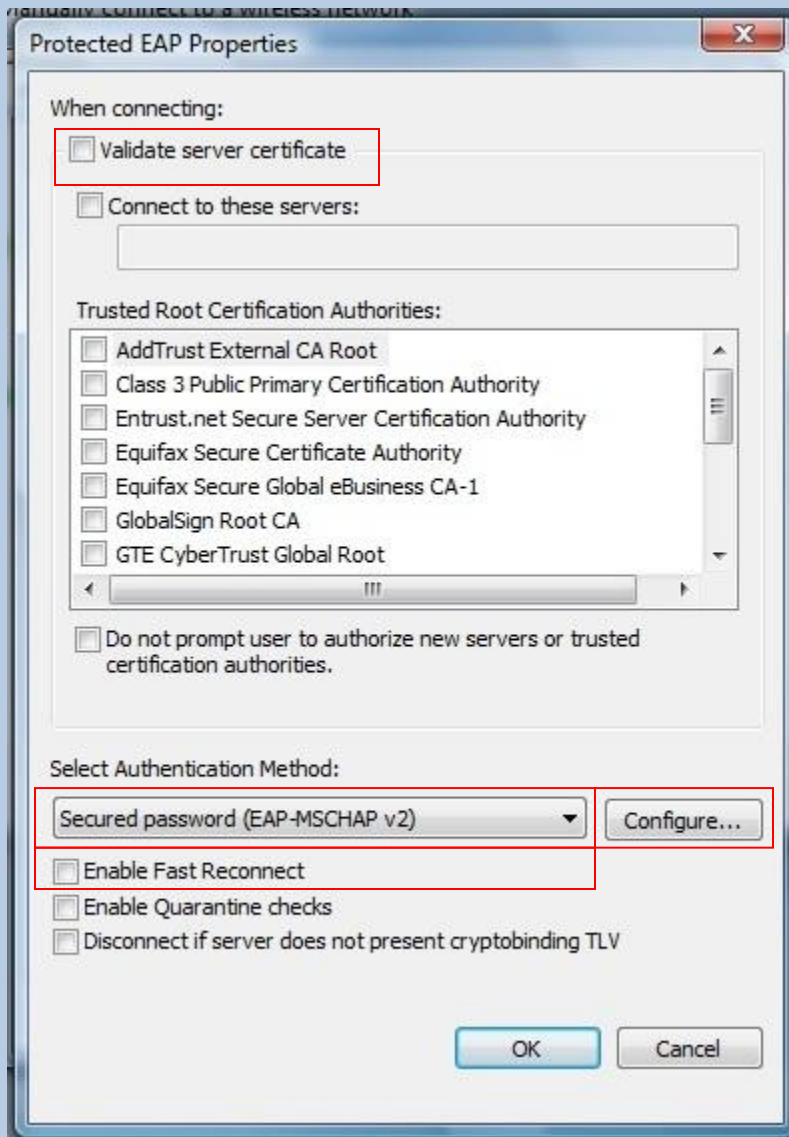


Uncheck the “Connect to a more preferred network if available” option if it is checkmarked.

Then, click on the “Security” tab.



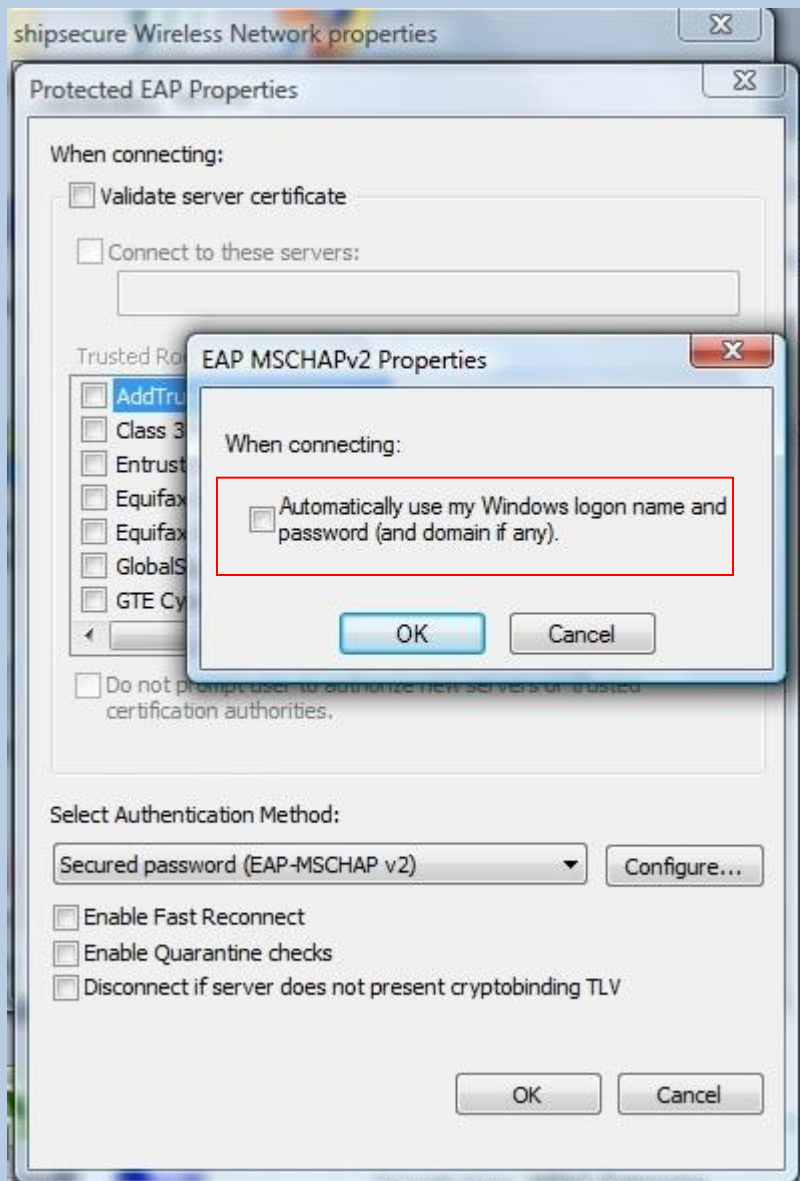
Click on the "Settings..." option.



Uncheck “Validate server certificate” checkbox.

Uncheck “Enable Fast Reconnect” checkbox.

Then, click on “Configure



Uncheck the “Automatically use my Windows logon name password (and domain if any).”

Click “OK” on all three dialogue boxes, and then Restart your computer.

Complete! Your wireless connection is now secured.