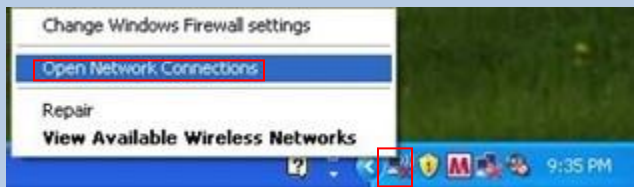




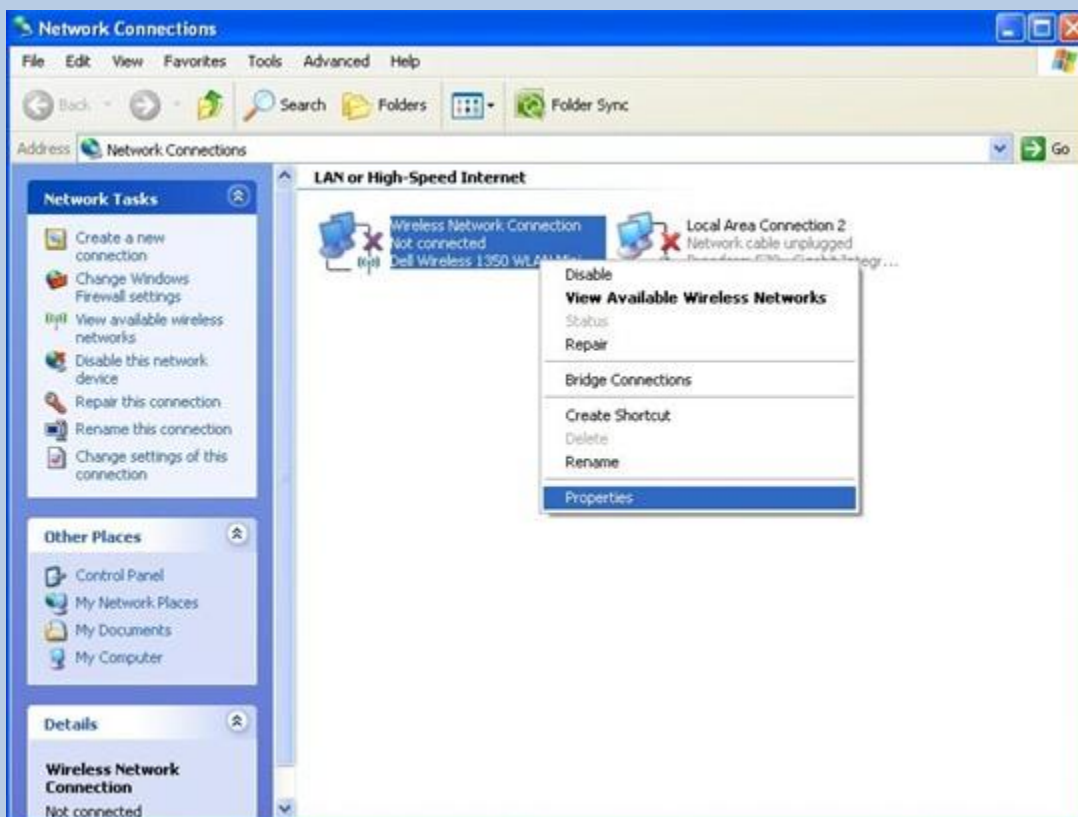
SHIPPENSBURG
UNIVERSITY

SU Helpdesk Presents:

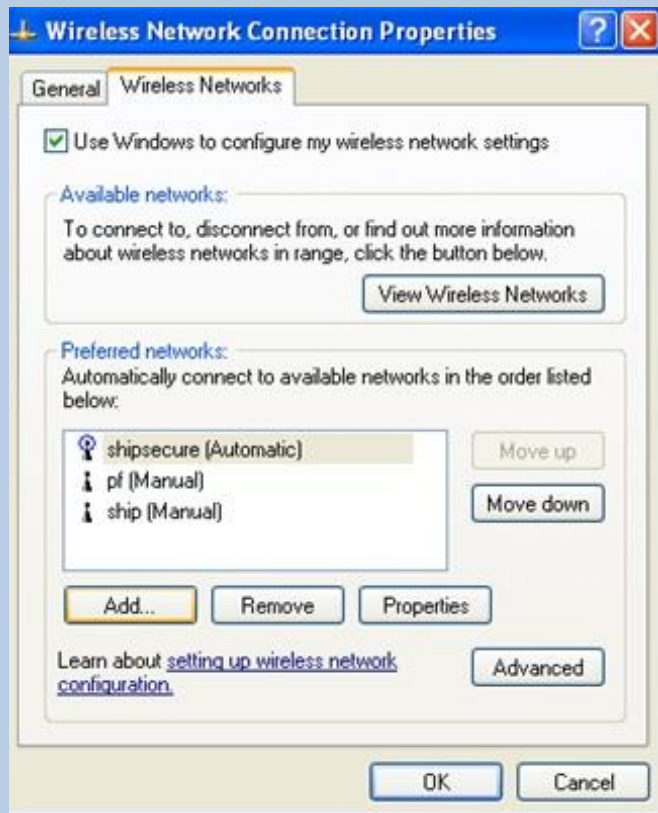
Windows XP Walkthrough for Secure Wireless Configuration



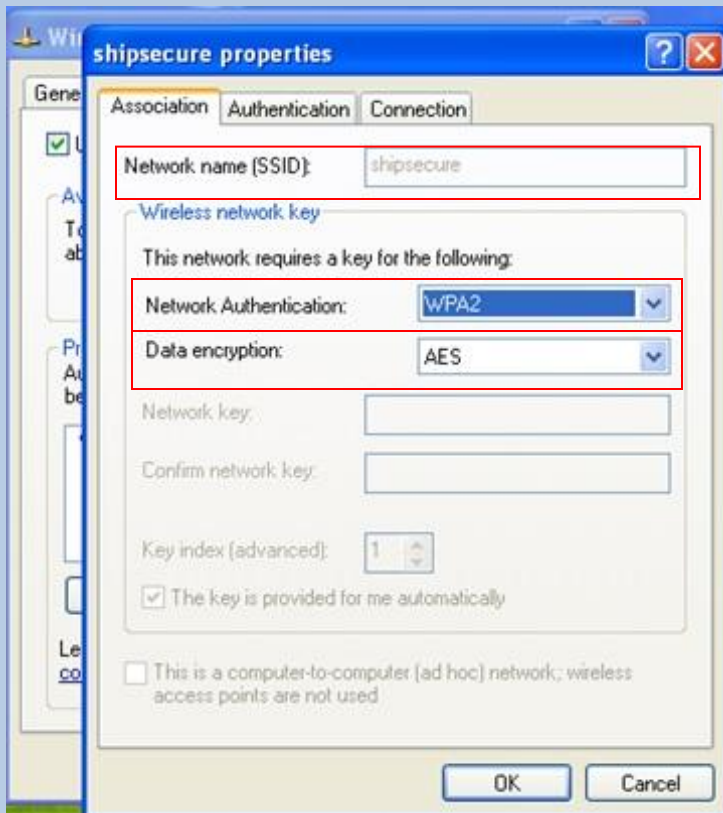
Right-click the wireless networks icon on the taskbar and click “Open Network Connections.”



Right-Click on the Wireless Network Connection and click “Properties.”



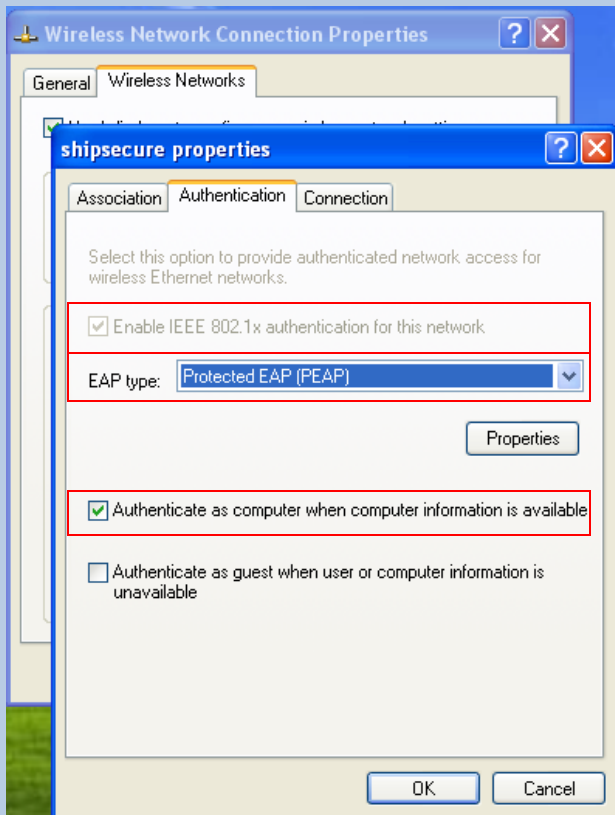
Click "Add."



Put "shipsecure" in the fillbox of "Network name (SSID)."

Change the "Network Authentication" to "WPA2."

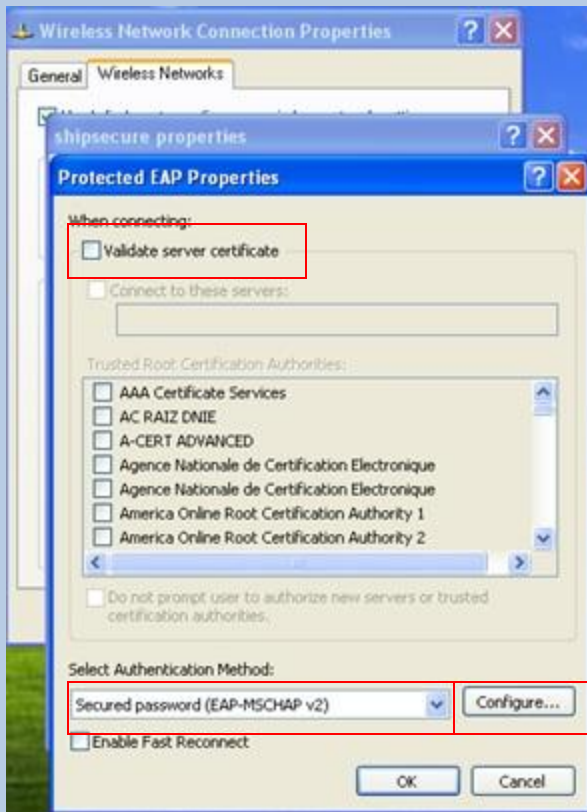
Change "Data encryption" to "AES."



Check “Enable IEEE.8021x authentication for this network.”

Change the EAP type to “Protected EAP (PEAP).”

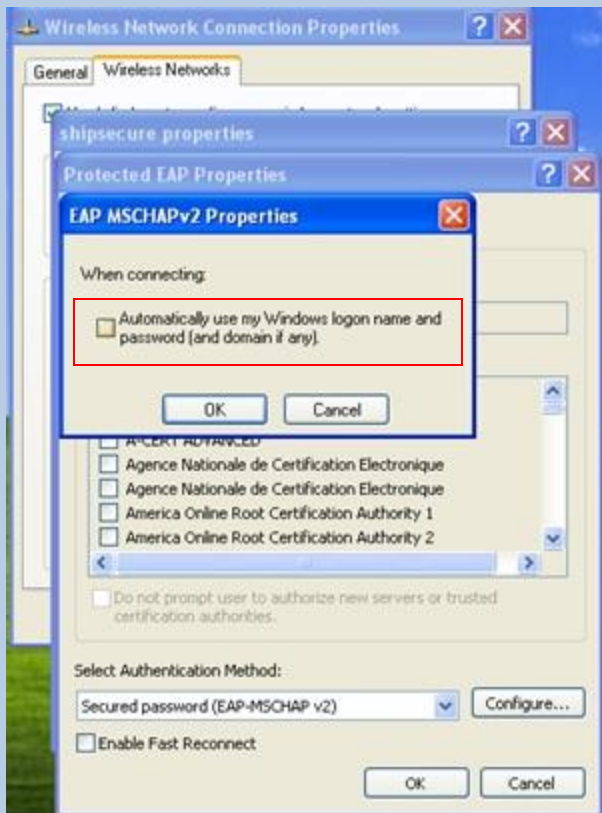
Check “Authenticate as computer when computer information is available.”



Uncheck "Validate server certificate."

Uncheck "Enable Fast Reconnect."

Click the "Configure ..." option.



Uncheck “Automatically use my Windows logon name and password (and domain if any).”

Click “Ok,” and click “OK” again on the previous dialogue box (Protected EAP Properties), and click “OK” in the Wireless Network Connection Properties dialogue box.

Complete! Your wireless connection is now secure!