

# John L. Grove College of Business



**2010-2011**  
Annual Report

*“A Tradition of Excellence”*



SHIPPENSBURG  
UNIVERSITY

# Contents

Shippensburg University of Pennsylvania...	2
Dean's Message .....	3
Mission Statement.....	3
John L. Grove College of Business.....	4
Reaccreditation .....	4
College of Business Advisory Board.....	5
College ranked among the nation's best.....	5
Finance Advisory Council.....	6
Supply Chain Management Advisory Council .....	6
College connects with Business School in France .....	7
Ship Global Connection .....	7
Endowments .....	8
Contributions .....	9
Beta Gamma Sigma .....	10
Student Awards and Scholarships .....	10
Ship MBA at East Stroudsburg .....	11
Verney Awarded Fulbright .....	11
HR Program Recognized.....	11
Board Member Focus: Chuck Diller.....	12
Student Focus: Richard Abel.....	13
Bryant in South America.....	13
Student Professional Associations.....	14
Accounting Club.....	14
Alpha Kappa Psi .....	14
Financial Management Association .....	14
Human Resource Management Club .....	15
Institute of Management Accountants.....	15
Investment Management Program.....	15
MIS Professional Association.....	15
Supply Chain Management/Logistics Club	16
Etiquette Dinner .....	15
2010 Career Expo.....	16
PxC Economist Speaks to Students .....	13
Alumni Receive University Awards.....	17
Giant Named Company of the Year .....	17
Internships .....	18
On-Campus Recruitment.....	19
Faculty Activities .....	20
Faculty Awards .....	23
Small Business Development Center.....	24
New Center Developments .....	27
PASSHE Initiatives .....	27
My Semester Abroad in Poland.....	28
Spring Social 2011 .....	29
Homecoming 2011 .....	29
3 <sup>rd</sup> Annual Golf Outing.....	30

## Shippensburg University of Pennsylvania

Shippensburg University is a public comprehensive university offering bachelor's and master's degree programs in three colleges: Arts and Sciences, Business, and Education and Human Services. There are approximately 1,100 graduate students enrolled at Shippensburg University. Undergraduate enrollment is 7,200.

The 200-acre campus is located in Cumberland County, forty miles southwest of Harrisburg. It is readily accessible from the Carlisle and Blue Mountain interchanges of the Pennsylvania Turnpike and from exits 24 and 29 of Interstate 81.

The Office of Professional, Continuing and Distance Education Studies (PCDE) provides credit and non-credit programs that meet the educational and training needs of the region,

offering courses online and at off-campus locations.

Shippensburg University is one of fourteen universities of the Pennsylvania State System of Higher Education. Founded in 1871 as the Cumberland Valley State Normal School, it graduated its first class in 1874.

Shippensburg University is accredited by the Middle States Association of Colleges and Schools, AACSB International, ABET, American Chemical Society, Council on Social Work Education, Council for the Accreditation of Counseling and Related Educational Programs, International Association of Counseling Services, Council for Exceptional Children, and by the National Council for the Accreditation of Teachers.



The articles for this report were prepared by the faculty and staff responsible for each area, and were coordinated by Dr. John G. Kooti, Dean 2010-11, and Debra K. Booz, Administrative Assistant.

## Dean's Message

Since taking the position of the Dean of the John L. Grove College of Business at Shippensburg University on July 1, 2010, I have met with faculty, students, alumni, Advisory Board, advisory councils and other constituencies as part of my effort to be fully informed about the current position of the College in preparation for developing a strategic plan that position the College effectively in the global management education. The College of Business has many successful alumni throughout the globe. I believe their success comes from the great education they received from the John L. Grove College of Business faculty. This success has been reinforced by proclaiming AACSB International accreditation for all undergraduate and graduate programs in business. This is an external validation of a highest form. Every five years AACSB accredited schools are revisited for adherence to standards that reflect high quality. Parents also validate our success in educating our students, because they continue to send their sons and daughters to Ship, because they believe in our mission of excellence in preparing principle leaders in a competitive global environment. Employers continue to seek our graduates, because they believe our graduates are well prepared, ethical, and very professional. We are also fortunate to be ranked among the top business schools in the world by *U.S. News & World Report* 2011 edition. The College of Business faculty continue to excel in teaching, intellectual contribution, and service. During the 2010-2011 academic year, sixteen achievement awards were presented to faculty for their accomplishments in the three areas of teaching, research and service. These awards were made possible by contributions of alumni and supporters of the John L. Grove College of Business. You will find the list of recipients of these awards in the annual report.

We have had a very successful Professional MBA program at Ship that has been offered at the Dixon University Center in Harrisburg and Hanover in addition to the campus. This program offering will be expanded to the York area effective fall semester 2011 and to the East Stroudsburg University campus in Spring 2012. We are also planning to offer the Emerging Leaders MBA program at the Dixon University Center and a completely online MBA effective fall semester 2012.

This year's success and progress are due to efforts and dedication to excellence of many people. I hope you are as proud of the students, faculty, and alumni, and other supporters featured in this annual report.

*Best Regards,  
John G. Kooti, Dean  
John L. Grove College of Business*



### *Mission Statement*

The John L. Grove College of Business at Shippensburg University provides a high value comprehensive educational experience that prepares students to excel as principled leaders in today's global business community.

## Grove College Earns Reaccreditation

In January 2011, the John L. Grove College of Business earned reaccreditation from AACSB International.

The accreditation means that Grove College of Business has met the standard of excellence for business programs at the undergraduate and graduate levels, and we have the highest quality business classes, faculty, research, students, and graduates. We provide our students with the knowledge and skills that employers require to be globally competitive. Our faculty also remains very active in research in order to provide students the most up to date business knowledge, skills, and applications. "I am very proud of our faculty, students, administrators, alumni, advisory board, and friends of the University and the College of Business for their dedication to excellence," said Dean Kooti.

In 1981, Grove College became the first school in the Pennsylvania State System of Higher Education and the ninth college overall in Pennsylvania to become internationally accredited by AACSB International. The college was established in 1971 and has earned a reputation as one of the premier business schools in the Mid-Atlantic Region. The college is one of only 24 schools in Pennsylvania and one of approximately 633 worldwide to have earned AACSB International accreditation.

## John L. Grove College of Business

The John L. Grove College of Business, established in 1971, is one of the premier business schools in the Mid-Atlantic Region. Since 1981, our College has been internationally accredited by the most prestigious business-accrediting agency in the world, AACSB International - The Association to Advance Collegiate Schools of Business. We offer a Master of Business Administration (MBA) degree and a Bachelor of Science in Business Administration (B.S.B.A.) degree as well as a number of certificate programs. The business programs at Shippensburg are relevant and challenging. We ask corporate executives, as members of the Grove College of Business Advisory Board and Councils, to help us plan programs that offer the preparation executives want and expect in their employees.

In the 2010-11 academic year, there were 117 MBA students enrolled across our three locations (Shippensburg, Harrisburg, and Hanover), and 1,433 undergraduate students enrolled within our three academic departments:

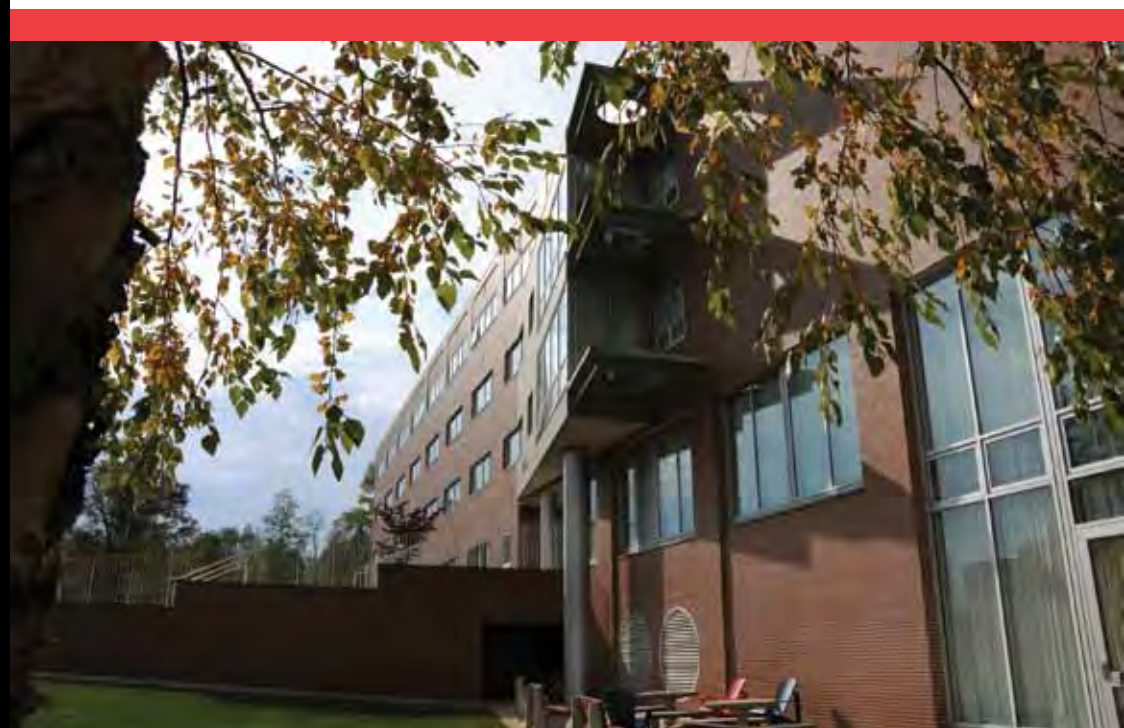
- Accounting, Management Information Systems, and Information Technology for Business Education
- Finance and Supply Chain Management
- Management and Marketing

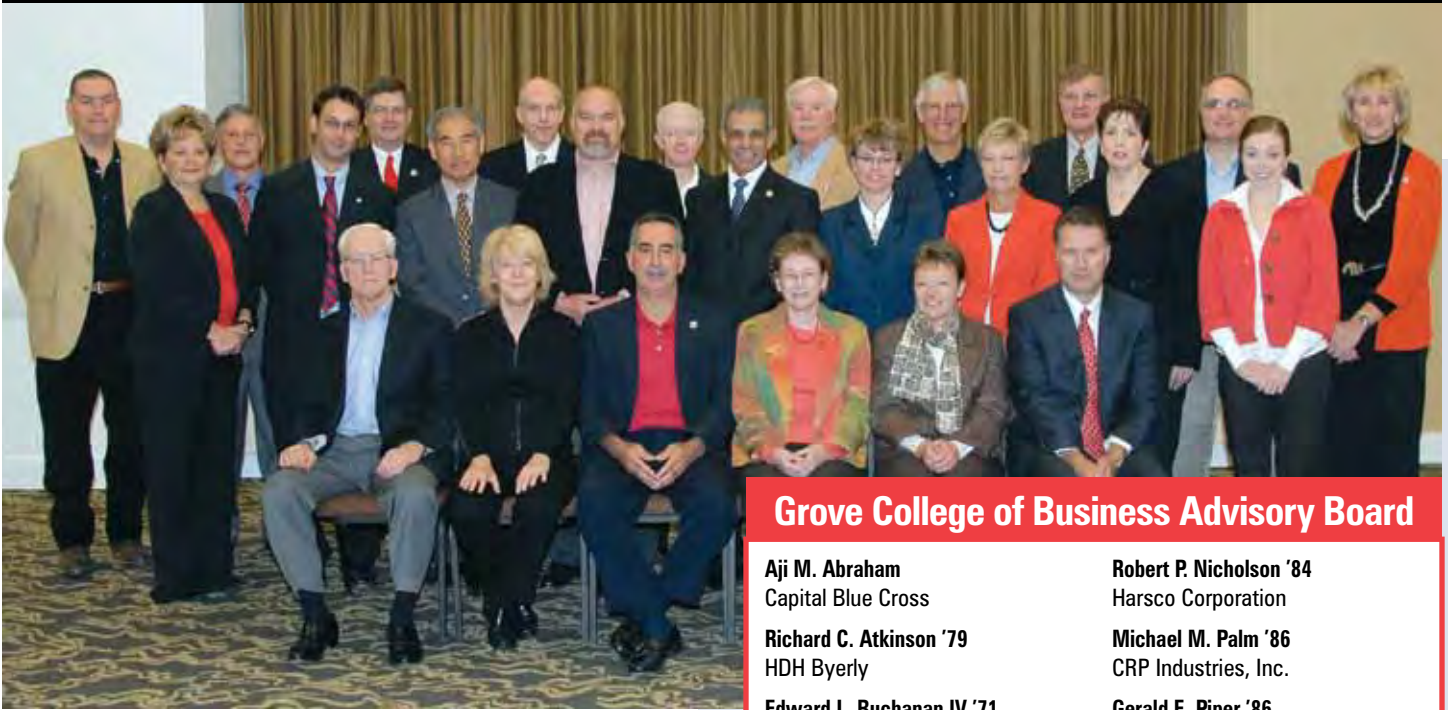
Our B.S.B.A. degree program features a strong common business core, a concentration in a specific major, and a balanced liberal arts component. This business core covers subjects from all functional areas of business and gives a broad foundation of business knowledge. It enables students to change business majors within the first two years with no loss of credits and provides career flexibility upon graduation.

The University participates in two major employment consortia each year and the College hosts the Career Expo where students can talk to representatives from various businesses about career opportunities. Students have an opportunity to gain firsthand job experience by completing a business internship. Our internships give students that blend of academic learning with real-world experience, increasing job opportunities upon graduation. Internships are available in a variety of businesses here in south-central Pennsylvania, in metropolitan areas like Philadelphia and Baltimore, and nationwide and internationally as well.

Our Grove College of Business faculty's goal is to provide students with a base of knowledge and skills for a lifetime of learning in a professional career of their choice. The faculty, over 95 percent of whom have a doctorate in their field of instruction, pride themselves in offering a highly personalized learning environment. Equally important, the educational experience of our students is guaranteed to be state of the art because our faculty members continue their professional growth through research and their work as consultants. In addition, our modern classroom building, Grove Hall, was designed with a 21st century education in mind. Our small classes enable students to interact on a one-to-one basis and this allows our faculty to help students develop strong communication, interpersonal, and teamwork skills which are vitally important in today's business world.

4





Back row (left to right) Craig Hill, Ron Kearns, Dr. Bill Ruud, Dr. Bill Oberman, Frank Stearn, Bob Ward, Lamar Stoltzfus, Chuck Diller, Jr., Dr. Bob Stephe, Lani Longarzo; Second row (left to right) Deb Booz, Dr. Mike Coolsen, Dr. Hong Rim, Gerald Piper, Dr. John Kooti, Marsha Hoy, Dr. Mary Myers, PJ Soto, Jessica Hughes; First row (left to right) Fred Potthoff, Dr. Joanne Tucker, Dr. Anthony Winter, Dr. Louise Hatfield, Nora Habig, and Chuck Nebel.

## Advisory Board Fall Meeting

Members of the Grove College of Business Advisory Board came to campus on Friday, October 30 to meet with the deans, members of our College Council, other faculty and selected students. This dedicated group meets once each semester to assist the College with various topics. At the fall meeting, the group was involved in helping review and revise the Grove College of Business Mission Statement.

## Grove College ranked among the nation's best business programs

In August 2011, *U.S. News and World Report* recognized the John L. Grove College of Business as among the best business programs in the nation.

The magazine's "Best Colleges" 2011 ratings recognized Grove College in the "Best Colleges Specialty Rankings: Best Undergraduate Business Programs" category. No numerical rank is given for those listed. According to the magazine, last spring it surveyed deans and senior faculty at undergraduate business programs accredited by the Association to Advance Collegiate Schools of Business. They were asked to rate the quality of programs with which they're familiar.

Dean Kooti said, "I am very proud of the John L. Grove College of Business faculty, staff, and students for continuing thirty-nine years tradition of excellence in business education. The *U.S. News & World Report* 2011 edition of undergraduate business program ranking is a wonderful testimony to this dedication."

## Grove College of Business Advisory Board

- |   |  |
|---|--|
| <b>Aji M. Abraham</b><br>Capital Blue Cross                         | <b>Robert P. Nicholson '84</b><br>Harsco Corporation                                 |
| <b>Richard C. Atkinson '79</b><br>HDH Byerly                        | <b>Michael M. Palm '86</b><br>CRP Industries, Inc.                                   |
| <b>Edward L. Buchanan IV '71</b><br>Smith Elliott Kearns & Co., LLC | <b>Gerald E. Piper '86</b><br>CenturyLink  |
| <b>Chris C. Bushey '79</b><br>Quandel Group                         | <b>Ronald J. Points '69</b>  |
| <b>Charles H. Diller, Jr.</b><br>Retired                            | <b>Frederick D. Potthoff '70</b><br>Kroff Chemical Company, Inc.                     |
| <b>Edward F. Ehret '87</b><br>Atlas Minerals & Chemical             | <b>Christopher E. Pruitt '84</b><br>East Penn Manufacturing Co., Inc.                |
| <b>Patrick Evans</b><br>Franklin Advisory                           | <b>Colette Raebiger '95</b><br>Pfizer, Global Logistics & Supply                     |
| <b>Bradley S. Everly '73</b><br>Orrstown Bank                       | <b>John R. Raebiger, Jr. '95</b><br>Pitcairn Trust Company                           |
| <b>Randy L. Fackler '86</b><br>PricewaterhouseCoopers LLP           | <b>Thomas M. Ramsburg '69</b><br>TMR, Inc.   |
| <b>James A. Gehr '83</b><br>Exel                                    | <b>William F. Rothman</b><br>RSR Realtors  |
| <b>Ronald G. Gipe '71</b><br>Martin's Famous Pastry                 | <b>P.J. Soto '77</b><br>U.S. Department of Labor-Office of Administrative Law Judges |
| <b>Nora Habig</b><br>M&T Bank                                       | <b>Curt E. Spicher '85</b><br>Spicher's Appliances                                   |
| <b>Craig H. Hill '77</b><br>Fulton Financial                        | <b>Frank Stearn</b><br>Retired   |
| <b>Marsha A. Hoy '89</b><br>Hoffman Ford                            | <b>Cindy Stewart '75</b><br>Family Health Council of Central PA                      |
| <b>Michael L. Hurt</b><br>Retired                                   | <b>Lamar R. Stoltzfus '77</b><br>ParenteBeard Company, LLC                           |
| <b>Ronald S. Kearns '64</b><br>Smith Elliott Kearns Company, LLC    | <b>Jim Thompson</b><br>Volvo Construction Equipment                                  |
| <b>Stephanie Kleinfelter '84</b><br>Keefer Wood Allen & Rahal, LLP  | <b>Jill J. Walmer '82</b><br>Highmark  |
| <b>James E. Kroh '65</b><br>R.H. Sheppard Company                   | <b>Robert E. Ward '77</b><br>Computer Aid, Inc.                                      |
| <b>Charles R. Nebel, Jr. '84</b><br>Boyer & Ritter, CPA             | <b>J. Joseph Zimmerman</b><br>Valley Quarries  |

First row (l to r): Anne Kingsborough, Lee Fortenberry, Ralph Hocking, Phil Carrasco

Second row: Chris Jackson, Dr. Paul Chiou, James Dailey, Dr. Hong Rim, Chris Weber, Dr. Mu-Sheng Chang

Third row: Greg McMullen, Ralph Fetrow, Matt Olecki, Donald Butler, James Benton, & Brian Walsh

## Finance Advisory Council

**Donald M. Butler, CFA '92**  
The Vanguard Group

**Philip J. Carrasco, CFP**  
Cornerstone Wealth Mgt. Group

**Christine E. Cheng '99**  
Penn State

**James L. Dailey, CFA '97**  
TEAM Financial Managers

**Ralph J. Fetrow, CFP**  
Members 1st Credit Union

**Lee Fortenberry, CLU, ChFC, CFP**  
Northwestern Mutual Financial

6

**Dr. Ralph T. Hocking**  
Professor Emeritus, SU Finance

**Christopher J. Jackson '97**  
Orrstown Bank

**Anne E. Kingsborough '01**  
Wells Fargo

**Louise Lovell**  
FEMA

**Greg McMullen**  
RedRock Investment Mgt.

**John R. Raebiger, Jr. '95**  
Pitcairn Trust Company

**David A. Rosen '91**  
Gleacher-Descap Securities

**Dr. Herbert J. Roth**  
Professor Emeritus, SU Finance

**Jennifer L. Sassani '93**  
Lehigh University

**Brian J. Walsh '80**  
Oppenheimer & Co. Inc.

**Christopher S. Weber '03**  
M&T Bank

**David C. Webster '03**  
Oxford University

**Sarah Wolf '04**



## Rosen Joins Finance Advisory Council

The Finance Advisory Council welcomes David A. Rosen, managing director, Gleacher-Descap Securities, New York, N.Y. Mr. Rosen has twenty years of experience working on Wall Street, specifically in the mortgage and asset backed securities marketplace.



He is a 1991 graduate of Shippensburg University, where he earned a BSBA with a double major in Finance and Economics. Shortly after graduation, he secured a job with Prudential Securities Incorporated as an associate in the Taxable Fixed Income Group. While at Pru, he assisted senior traders and salespeople in all sectors of fixed income: Mortgage Backed Securities (MBS), Asset Backed Securities (ABS), U.S. Treasury Securities, Corporate Bonds, U.S. Agency Securities, Interest Rate Swaps, and Short-Term Money Markets.

In 1993, after two years at Pru, Mr. Rosen

left to join a startup firm called Descap Securities, then a five-person organization. He has worked at the same firm ever since. Now known as Gleacher-Descap Securities, the firm has grown into a 400-person, full-service boutique investment bank with an annual trading volume that exceeds \$100 billion. Mr. Rosen is currently a managing director in the Mortgage and Asset Backed trading group, and over the past eighteen years has held a variety of positions including: MBS Sales; Collateralized Mortgage Obligation (CMO) Trader; CMO Derivative Trader; Residential Subordinate Trader and MBS Pass-Through Security Trader. He now spends the majority of his time focused on MBS/ABS sales, but continues to work closely with the firm's traders on short/long term trading strategies for the firm's \$1.6 billion trading position.

Mr. Rosen resides in Manhattan where he is active in several charitable organizations and likes to spend his free time cheering on his beloved New York Yankees, Knicks, Jets, and Rangers.

## Supply Chain Management Advisory Council

**Dan Altomare**  
World Kitchen, LLC

**Carol L. Baer '95**  
Exel

**Ray Boldosser**  
Keen Transport

**Edward Botchie**  
**Jodi Buhrman '97**  
Amazon

**Bill Burke**  
Allen Distribution

**H. Douglas Bushong '84**  
The Jay Group

**Lee Ann Christy**

**Ed Gallagher**  
Menlo Worldwide Gov't Service

**Peter J. Hamilton '84**  
Worley Parsons

**Scott Hile**  
Exel

**Rick Howenstine**  
Clark Distribution Systems, Inc.

**Gary Kelley**  
D.M. Bowman, Inc.

**John Kessler**  
Staples

**Chris Malone '86**  
The Hershey Company

**Douglas McLaughlin**  
Exel

**Dave Metzler**  
Carlisle Carrier Corp.

**Colette Raebiger '95**  
Pfizer, Global Logistics & Supply

**Bob Riegler**  
Roadway Express

**James Runk**  
PA Motor Truck Association

**David Santeusaniou '80**  
Tyco Electronics Corporation

**Michael Sibbel '91**  
Uchiyama America, Inc.

**Dr. Richard Stone**  
Professor Emeritus  
Shippensburg University

**Erik D. Thompson '94**  
Dailey Express, Inc.

**Keith Walborn**  
Cumberland-Keuka

**Jim Ward**  
D.M. Bowman, Inc.

**Jake Wimmer**  
World Kitchen, LLC



Seated, from left, are President Bill Ruud; Marie-Helene Wright, international relations coordinator and assistant to the director of La Rochelle Business School; and Dr. Barbara Lyman, provost and senior vice president for academic affairs. Standing, from left, are Mary Burnett, associate dean of students and director of international programs; Dr. John Kooti, dean of the John L. Grove College of Business; and Dr. Anthony Winter, associate dean of Grove College.

## College connects with Business School in France

In April, representatives of Shippensburg University and La Rochelle International Business School in La Rochelle, France signed an intent agreement to promote development of joint studies, research and training activities, and other educational programs of mutual interest.

The agreement was signed by Shippensburg President Bill Ruud and Marie-Helene Wright, international relations coordinator and assistant to the director.

“We live in an ever-more globalized world and it is important for our students to have the opportunity to better understand and appreciate that new paradigm,” Dr. Ruud said. “This joint agreement will not only allow our students to attend this outstanding business school, but allow their students to attend Shippensburg and our nationally-accredited John L. Grove College of Business.”

Under the agreement, the two institutions agree to cooperate in the exchange of students for either one semester or an entire academic year.

La Rochelle is about three hours southwest from Paris. According to information from the school it has 2,300 students, including 400 international students, and has 95 partner universities worldwide including nine in the U.S. It offers a variety of programs including a master of management degree, an international bachelor degree, a bachelor of business degree, a bachelor in hospitality management degree and a master’s degree in tourism.

La Rochelle Business School offers a broad range of undergraduate, graduate, and executive business education taught in both English and French, according to its information. The school is a non-profit, independent research and educational institute and a member of the “Grand Ecoles” system. Its programs emphasize internships and international exchange offering students ready access to the European job market.

## Ship Global Connection

Four SHIP grads enjoyed a great night in Shanghai! JohnPaul Bennett '10, Jodie Vanderman '00, Muhammad Hussein '00, all College of Business graduates, and Mike Goldberg '06, a geography/earth science grad, are all living and working in Shanghai, China.



# College of Business Endowments

## **Fred C. Archer Memorial Award**

This award established in 1974 is presented in memory of Fred C. Archer who served as a professor of business education from 1970-1974. It is presented annually to a business education student, as a second semester junior, has a 3.0 or better overall academic average and has excelled in the major subject area.

## **Reva Hoback Brubaker Scholarship Fund**

Established by Ronald C. Brubaker in memory of his wife Reva Hoback Brubaker. A renewable scholarship for an incoming freshman majoring in business and demonstrating a financial need and academic promise. Recipient must be a resident of Pennsylvania, Maryland, West Virginia, or Ohio.

## **The Dr. Max G. Cooley Scholarship Fund**

Established in honor of Dr. Cooley at the time of his retirement from Shippensburg University to fund scholarships for students in business education.

## **Harold U. and Helen F. Crouse Business Scholarship Award Fund**

Awarded annually to the business student who has demonstrated the potential for future leadership in business and in society by virtue of his or her academic achievement, participation in student activities, and promotion of the aims and objectives of the college.

## **The Charles H., Jr. and Jane E. Diller Scholarship Fund**

Established by Mr. Diller, member of the College Advisory Board, and retired executive of JLG Industries, a full-tuition scholarship awarded to a full-time freshman business major.

## **The Dinger Scholarship Fund**

Established by Dennis L. Dinger, Accounting '72, in honor of his mother and in memory of his father. For an incoming freshman business major from Tri-Valley High School.

## **Gerald R. Fetrow Scholarship Fund**

For a student-athlete enrolled in an undergraduate degree program within Grove College of Business who intends to become a student in good standing in one of the following athletic teams: baseball, softball, men's basketball, or women's basketball.

## **The Fogelsonger Scholarship Fund**

Established in honor of alumnus Ned R. Fogelsonger. One-year scholarship awarded to upper-division students intent on pursuing a career in the insurance industry and/or financial services industry.

## **Harry R. Frehn Research Fellowship Endowment**

This fellowship supports research in business and economics by faculty in the College of Business.

## **The Dr. Edward S. Goodhart Endowment Scholarship Fund**

For incoming full-time freshmen entering an undergraduate degree program administered by the Accounting Department. A four-year scholarship with minimum GPA and credit requirements.

## **John L. and Cora I. Grove Scholars Program Endowment**

This scholarship fund is used to attract and retain academically talented and needy students pursuing studies leading to a career in business.

## **John L. and Cora I. Grove Endowment for Faculty Research and Development**

Funds from this endowment are used to promote basic and applied research as well as professional development activities.

## **John L. and Cora I. Grove College of Business Endowment**

Provides funds for such areas as resource material, equipment, faculty recruitment, and faculty projects.

## **Renetta F. Heiss Scholarship Fund**

Provides scholarship assistance to an incoming student enrolled in business education or office administration based upon academic excellence and promise of success.

## **Edwin L. Herr Study Abroad Scholarship Fund**

Established by Dr. Edwin L. Herr '55, this scholarship funds annual study abroad scholarships.

## **The Dr. Ralph T. Hocking Scholarship Fund**

Four-year scholarship for a student majoring in finance established by Dr. Ralph Hocking who served 30 years as a professor in the John L. Grove College of Business.

## **Dale E. Kann Endowment**

Established by Dale E. Kann, Business Education '63. Funds joint research by faculty and students.

## **The Norman E. King Fund**

Established through contributions in honor of a retired accounting faculty member. Proceeds are used to purchase current professional materials for the accounting faculty.

## **The Frederick L. Peters Memorial Scholarship Fund**

Established in memory of Mr. Peters, who earned his bachelor's and master's degree in business administration from Shippensburg and was employed by Shippensburg as an accountant for more than 20 years. Awarded to students entering the College from Shippensburg Area and Big Spring school districts.

## **Michael and Nancy Pinkowicz Business Scholarship**

Four-year scholarship, established by Michael Pinkowicz '76 and his wife, Nancy, in appreciation of his academic and extracurricular experience at Shippensburg. Awarded to incoming freshmen from Philadelphia, Montgomery or Delaware counties with first preference given to qualified minority students.

## **The Ignatios and Anastasia Prokop/John L. Prokop Scholarship Fund**

Established by John L. Prokop, '57-'73. For entering freshmen pursuing an information technology for business education degree with priority given to students from Cumberland, Dauphin, Lancaster, and York counties.

## **The Chris and Robin Pruitt College of Business Scholarship Fund**

Four-year freshman scholarship, established by Chris and Robin Pruitt who graduated in 1984 with degrees in accounting and elementary education, respectively, to help deserving students further their education and share the "Ship" experience.

## **The William F. and Susannah M. Rothman Scholarship Fund**

Four-year scholarship for incoming freshman students graduating from Harrisburg City School District with second preference given to applicants from Steelton-Highspire School District. Recipients must demonstrate financial need.

## **The Jack A. and Mildred Prince Squires Scholarship Fund**

Mr. Jack A. Squires, Business Education '49, owned and operated Squires Electronics and Appliances, Inc. in Shippensburg and Chambersburg. Provides for a student with junior standing and academic excellence.

The John L. Grove College of Business has a number of special endowments that provide continuing support to college programs and activities which otherwise might not be funded, nor possible.

If you are interested in creating an endowment through the Shippensburg University Foundation for the benefit of the John L. Grove College of Business, please call the Shippensburg University Foundation at (717) 477-1377 or visit our website at [www.sufoundation.org](http://www.sufoundation.org).

## **Robert E. "Bucky" Ward Athletic Scholarship Fund**

Established by Robert E. "Bucky" Ward '77, this scholarship is to be awarded to a Parkland High School graduate enrolled in an undergraduate degree program in the John L. Grove College of Business who participates in Shippensburg University's intercollegiate athletic program.

## **The Brooke Ashley Weaver Memorial Scholarship Fund**

Established by her parents Jim and Karen Weaver to remember Brooke, a student at the College who passed away in her sophomore year. Provides a full-tuition scholarship to a student in the College.

## **Ursula F. Wiegand Endowment**

Given by Ursula Wiegand, a longtime member of the Economics Department. Used by the department to fund research, classical music concerts, and provide tutors for economics students.

## **The Wisman Endowment**

Established in memory of Mr. Frank Wisman, whose vision led to the creation of the Investment Management Program. Used as a vehicle for giving finance majors experience in actual investment management.

## **The Zumbrun/Korkuch Family Scholarship Fund**

Established by Jean Zumbrun Korkuch '49 and husband Frank Korkuch '50 and endowed by them and other family members. For entering freshmen pursuing an Information Technology of Business Education degree with priority given to students from Cumberland, Dauphin, Lancaster, and York counties.

## 2010-2011 Inductees

### JUNIORS

Lindsay Billotte  
Benjamin Fetrow  
Ryan Grigg  
Jared Hammers  
Scott Henry  
Jordan Middleton  
Troy Oberholtzer  
Ashwini Palande  
Nicholas Pederson  
Edward Quirke  
Justin Rabe  
Katie Reese  
Kaitlin Rodgers  
Charles Sabol  
Daniel Tebbs  
Evan Wabrick

### SENIORS

Alex Andrussier  
Jennifer Hoover  
Travis Laub  
Matthew Miller  
Katie Morton  
Timothy Rogan  
Stacie Stuart  
Tara Walsh

### MBA

Christopher Buchs  
Justin Kleinfelter  
Timothy Kost\*  
Amanda Morgan  
Sookti Tankala  
Amber Whitney

\*Denotes second recognition.



Shippensburg's Beta Gamma Sigma Chapter honored Dr. Barbara Lyman and Dr. April Bailey at its spring induction ceremony. Pictured left to right are Associate Dean Tony Winter, Dr. Bailey, BGS Vice President Nathan Shearer, Dr. Lyman, BGS Vice President Stuart Keeler and Dean John Kooti.

## Beta Gamma Sigma Inducts Newest Members

On April 15, 2011, Beta Gamma Sigma inducted thirty new members into the Shippensburg chapter. The induction ceremony was Dr. John Kooti's first as dean of the John L. Grove College of Business. Along with the new inductees, Beta Gamma Sigma recognized Dr. Richard Stone for his outstanding service to the Shippensburg chapter.

The chapter honorary inductee was Dr. Barbara Lyman, Provost and Senior Vice President for Academic Affairs. Her speech at the ceremonial dinner was inspirational to all Beta Gamma

Sigma members and we thank her for her contribution.

Beta Gamma Sigma would also like to thank Dr. April Bailey, Assistant Professor of Accounting, for her exceptional work as chapter secretary and administrator as well as Debra Booz for her enormous amount of effort she put forth for the induction ceremony and dinner.

This year's Beta Gamma Sigma scholarship recipient was Matthew Miller. Next year's vice presidents for Beta Gamma Sigma will be Alex Andrussier and Benjamin Fetrow.

## Student Awards and Scholarships

### John L. and Cora I. Grove Scholars

Nathan Bonner  
Cari Butler  
Jesse Carberry  
Dave Carney  
Erin Conners  
Amanda Dubs  
Lindsay Gemmell  
Richelle Groff  
Gage Koster  
Jacob Landis  
Benjamin Miller  
Maggi Miller  
Edward Quirke  
Arthur Votta, Jr.

### Fred C. Archer Memorial Award

Christopher Haun

### Reva Hoback Brubaker Scholarship

Jeffrey Riedy  
Scott Serfass

### Capital Blue Cross-John L. and Cora I. Grove Business Information Systems

### Scholarship/Internship

Richard Sopko

### The Dr. Max G. Cooley Scholarship

Lisa Wimer, Fall '10  
Ashley Sanders, Spring '11

### Harold U. & Helen F. Crouse Business Scholarship Award

Travis Laub

### Cumberland Valley Society for Human Resource Management Scholarship

Erin Thompson

### The Charles H. Diller, Jr. and Jane E. Diller Scholarship

Evan Wabrick

### The Dinger Scholarship

Maria Harner

### Distinction of Academic Excellence Award

Nathan Shearer

### Gerald R. Fetrow Athletic Scholarship

Ben Miller

### The Fogelsonger Scholarship

Richard Fino  
Brittany Kandler  
Travis Kemper

### The Giant Food Stores Business Administration Scholarship/Scholarship/Internship Program

Cody Hutchinson  
Jordan Middleton

### The Dr. Edward S. Goodhart Endowment Scholarship

Devin Miller

### Renetta F. Heiss Award

Dana Delewski  
Richard Sopko  
Graydon Turner

### Edwin L. Herr Study Abroad Scholarship

Laura Holloway

### Highmark, Inc. Scholarship

Hilary Lyons

### The Dr. Ralph T. Hocking Scholarship

Sara Sjoberg

### Northwestern Mutual Scholarship/Internship

Jessica Schubach

### The Frederick L. Peters Memorial Scholarship

Justin Peterman

### Michael and Nancy Pinkowicz Business Scholarship

Ryan Connolly

### The Ignatios and Anastasia Prokop/John L. Prokop Scholarship

Maria Carbone

### The Chris and Robin Pruitt College of Business Scholarship

Neil Lennon

### Rager, Lehman & Houck, P.C. Scholarship

Jennifer Hoover

### The William F. and Susannah M. Rothman Scholarship

Bobby Price

### The Smith Elliott Kearns & Company, LLC Scholarship Program

Benjamin Boyer  
Ryan Grigg  
Henry Scott

### The Jack & Mildred Prince Squires Scholarship

Amanda Dubbs  
Laura Henzy  
Erin Thompson

### Robert E. "Bucky" Ward Athletic Scholarship

Meghan Herr

### The Brooke Ashley Weaver Memorial Scholarship

Lindsay Berkstreser

### The Zumbun/Korkuch Family Scholarship

Adrienne Henke



## Verney Awarded Fulbright Scholarship

Dr. Thomas P. Verney, professor of international management, has been selected for a Fulbright Scholarship award to Wroclaw, Poland. The Fulbright Program, the U.S. Government's flagship international exchange program, awards scholarships based on academic merit and leadership. The program provides recipients with the opportunity to study, teach, and conduct research, exchange ideas and contribute to finding solutions to shared international concerns.

While at the Wroclaw University of Economics in Wroclaw Poland, Dr. Verney will be teaching courses in International Human Resource Management. He will also collaborate with his Polish colleagues on student issues including online learning, study abroad programs, and internships.

According to Dr. Verney, "The most common question I receive when people hear that I was awarded a Fulbright to Poland is, of all places, why Poland? My standard answer is that, aside from the fact that my paternal grandparents im-

migrated from Poland (and my maternal grandparents from Slovakia) and that I was very involved in establishing a student exchange program with Wroclaw University of Economics, the simple fact is that Poland is a beautiful country with an amazing history, rich tradition, and an extremely warm and friendly people. From the Monastery of Jasna Góra in Częstochowa, Poland, which is the third-largest Catholic pilgrimage site in the world and home to the beloved miraculous icon of Our Lady of Częstochowa (Black Madonna), to the salt mines of Wieliczka to the death camps of Auschwitz and Birkenau, Poland's cultural history is indeed unique."

Dr. Verney has been on the College of Business faculty since 1977 and has served in numerous roles such as department chair, MBA director, and acting associate dean.

The Fulbright Program operates in more than 155 countries worldwide. Approximately 1200 U.S. scholars receive Fulbright awards annually.



## Ship Brings MBA to East Stroudsburg

Shippensburg University and East Stroudsburg University (ESU) entered an agreement in June that will bring Ship's MBA program to ESU's campus to meet a growing need in that region.

According to ESU President Robert Dillman, "Offering the program at ESU will provide working professionals, aspiring entrepreneurs, recent ESU graduates and others in the Stroudsburg region with convenient evening access to a high-quality, affordable MBA degree program. The partnership also demonstrates the efficiency of cooperative planning between PASSHE universities as we strive to minimize duplication of existing academic programs."

The program begins with the Spring 2012 semester. Classes will be taught at East Stroudsburg by Ship faculty and, when needed, by ESU faculty. Students must meet admissions requirements set by Shippensburg and will receive their degree from Shippensburg. Students will also be able to use the ESU library during their studies. Each university will also appoint a liaison to coordinate the program.

Seated are ESU President Robert J. Dillman and Ship President Bill Ruud. Standing, from left, are Dr. Van A Reidhead, Provost and Vice President of Academic Affairs at ESU; Dr. Marilyn Wells, Vice Provost and Graduate Dean at ESU; Dr. Alla L. Wilson, Dean, College of Business and Management at ESU; Dr. John Kooti, Dean, Grove College of Business; and Dr. Jody Harpster, Executive Vice for President External Affairs and University Relations at Ship.

## HR program earns national recognition

The Human Resource program has been recognized as being aligned with the Society for Human Resource Management's human resource curriculum guidelines.

The Society for Human Resource Management (SHRM) curriculum guidelines help develop a common, minimum skill set in students, which human resources professionals look for when hiring.

According to Dr. Vicki Taylor, associate professor of management and faculty adviser for the university's SHRM chapter, the review consisted of whether the degree program includes required content in such areas as employee and labor relations; employment law, job analysis, and job design; organizational development; performance management; recruitment and selections; strategic human resource management; and compensation and benefits.

"Alignment with SHRM not only provides our program with public recognition, but it also provide professors at Shippensburg with case studies and academic teaching modules that have been developed for use in academic settings by recognized professionals in the field of HR," said Taylor.

## Board Member Focus: Charles H. Diller



When the boss asked him to serve on Shippensburg's College of Business Advisory Board in the early 1980s, Chuck Diller had no choice but to say yes. The boss was John L. Grove, founder and president of JLG Industries, for whom the college would later be named.

JLG Industries in McConnellsburg hires many Ship alumni, so Chuck also understood that it was in the company's best interest to help the college with its mission to educate students. What happened next was unexpected. "I fell in love with Shippensburg University—the bright students, the leadership, and the dedicated faculty."

Now Chuck says it's "all about the students." He appreciates from his own experience what it takes to get a college degree. After graduating from East Pennsboro High School in 1963 he moved to the West Coast where he worked for a year supporting himself and saving money to attend college. With the help of a part-time job and academic and athletic scholarships, Chuck put himself through school, graduating from California State Polytechnic University in 1968 with a B.S. degree in accounting.

That hard work paid off. After two tours in Vietnam as an officer in the U.S. Marine Corps, Chuck joined the accounting firm of KPMG Peat Marwick where he worked from 1971 to 1977. He then joined JLG Industries where he became a CPA and received successive promotions until he became Executive Vice President, Chief Financial Officer and Director. He retired in 2000 to focus his attention on his wife, Jane, who had been injured in a serious car accident in 1999.

Chuck's bond with the university continues to grow. In 2003, he and Jane established a scholarship for students who enroll in the College of Business who are graduates of Mechanicsburg High School, which Jane attended, or East Penn, Chuck's high school.

The full-tuition scholarship is not intended for the top students, but rather for the average student with potential, who, with some financial help, can succeed in college. "That was me—the average student. I know what it's like to struggle to get good grades," said Chuck. "But I also know how important education is and how difficult or even impossible it would have been for me to attend without financial help."

Their commitment to education encouraged Chuck and Jane to provide for additional scholarships through a planned gift "so that the scholarships will continue once we are gone."

In the meantime, the Dillers are active with their church and the Shippensburg University Foundation and enjoy traveling extensively.

One of the highlights of the year for Chuck is the annual spring Scholarship Dinner when recipients share a meal with their benefactors. At the 2011 dinner, Chuck and Jane dined with Evan Wabrick, recipient of the The Charles H. Diller, Jr. and Jane E. Diller Scholarship.



## Student Focus

### Richard A. Abel III.

Richard, a senior MIS major, has become a familiar face with students, faculty, and staff in Grove Hall.

He's been active in several of the student professional organizations including the Investment Club, Alpha Kappa Psi, Financial Management Association (FMA), and MIS club. Most notably, Richard served the Investment Club as marketing co-chair and then as president. During his time in FMA Richard designed and built their first website as their first webmaster and was marketing chair. In MIS he has helped with presentations to club members on new cloud technologies and its applications like Gmail, and Google Docs.

Richard has also served the college as a long-standing member of the Dean's Student Advisory Board. He has also helped with the most recent AACSB reaccreditation process as an undergraduate representative. Richard helps connect prospective and current students to the college by attending Admissions Open House programs and by starting the Spring Social event, which college students and faculty come together in an informal outdoors setting for food, games, competitions and fun. Some of the popular events from last spring were the volleyball tournament that twelve teams took part in, Goose Brothers Ice Cream, and the faculty vs. student kickball game that the students won.

Dr. Tony Winter refers to Richard as "Mr. Network," because "he is always connecting with faculty, staff, students and alums — something we encourage all of our students to do: network!"

In his free time Richard enjoys traveling both domestic and abroad, hiking, camping, rock climbing, sailing, competitive swimming, reading, computers, gadgets, and running.

While unsure of what his future might hold, Richard plans a career with a medium-to-large IT company where he could work with both people and technology and where traveling is a norm.



## Scholarship Sends Bryant to South America

Sarah Bryant received a scholarship to attend the 2011 Mercosur PDIB program conducted by Florida International University to Brazil, Argentina, and Chile in May 2011. The program was to educate U.S. faculty as to how these countries are dealing with the global economic crisis and how the "change" in the U.S. will affect bilateral relations and the regional trading block. The program exposed seventeen faculty from around the U.S. to business professionals and faculty members in each country. Presentations included the social, political, economic, and business environments that exist in South America. Topics included national economic reforms and adjustments, the opening of markets to the global economy, regional integration as a basis for global competition, the impact of these domestic changes on commerce with the U.S., and both regional and country-specific business practices. Participants had the opportunity to meet with business faculty members from academic institutions, business executives from multinational companies, government officials, and to visit cultural sites to immerse themselves in the local culture.



# Student Professional Organizations

## Accounting Club

Many of our members attended the Career Expo held in the fall semester. The club compiled a book with the résumés of all members as a great way to get our member's résumés in the hands of prospective employers. Consequently, many students received internship or employment offers through the event!

Nearly eighty students attended the club's club seventh annual etiquette dinner. There were also ten accounting firms in attendance to network with our students.

The Accounting Club holds meetings every other Thursday throughout the school year. We invite accounting firms to speak to our members on current accounting topics. In 2009-2010, we were lucky enough to host the following firms at our club meetings: Kern and Company, DCAA, ParenteBeard, Vanguard, Rager Lehman and Houck, Squire Lemkin + Company, SF & Company, Becker, Smith Elliot Kearns & Company, KPMG and Reinsel Kuntz Leshner. RKL also attended the end-of-the-year club picnic celebration in April.

The current year's officers were President Anne Whiteley; Vice President Alyssa Boeggeman; Treasurer Jamia Brown; Secretary Jenna Hershey; Membership Director Nathan Shearer; and Webmaster Leslie Danley. Elected officers for the 2011-2012 year are: President Nick Spinelle; Vice President Alyssa Boeggeman; Treasurer Jamia Brown; Secretary Alyssa Aumack; Membership Director Sean Minford; and Webmaster Ryan Schweikert.



The club takes a field trip to the Yuengling brewery in Pottsville, PA every year. In the picture from left to right are: (1st row) Dick Yuengling, Chris Gaydis, Anne Whiteley, Matt Grassmyer, Nick Spinelle, Ryan Schweikert (2nd row) Andrew Chambers, Michelle Miller, Jake Dunkelberger, David Ness

## Alpha Kappa Psi

Alpha Kappa Psi hosted the annual Etiquette for Success Academy in April with the theme of "From Backpack to Briefcase." The event included presentations from six different professionals who spoke on a wide variety of topics relevant to business students. A common theme was interviewing and adapting to new jobs. Students this year were guided through the interview process by a Human Resources representative from Target; unlocked the keys to success with the help of Mr. Dmitry Zhmurkin, the University Relations director with TE Connectivity; and learned the most common mistakes made by newly-hired employees from representatives of Northwestern Mutual.

Twenty AKP members attended the Principled Business Leadership Institute (PBLI) in Philadelphia where they attended panel discussions and heard speakers on topics including interview etiquette, ethical decisions on the job, and how to best raise funds for your chapter. The

Shippensburg University Xi Tau chapter of Alpha Kappa Psi continues to send student members to PBLI every year because it is more than just a trip to Philadelphia with your friends. As up and coming business workers and leaders, the PBLI is a networking experience like no other. Students attending the event are a part of a brotherhood greater than their own chapter. The events help strengthen fraternal bonds and foster discussions to help build on previous knowledge.



Alpha Kappa Psi brothers (L to R) Kaitlin Hillegass, Shanna Nally, Christina Davidson, Evan Miller, Nnaemeka Okoro, Bridget Ringer, and Tyler Harris pose outside the Grove Forum before ESA.

Each spring AKP recognizes students who have made the Dean's List with a GPA of at least 3.3 on a 4.0 scale. A reception with the College of Business deans and some of the faculty is followed by awards presentations. Toan Do received the award for the sophomores with the highest cumulative GPA, Ashwini Palande for juniors, and Nathan Shearer for seniors. We then played brief game of Shippensburg-style Jeopardy and celebrated with delicious hors d'oeuvres, cake, and drinks.

## Financial Management Association

The Financial Management Association is restructuring to help students with their classwork and ultimately to bring more students into the club. In addition to bringing in speakers, attending the national conference, and hosting the etiquette dinner, we are starting to help the students learn more about the basic concepts of finance and which websites to use for projects and how to navigate around them. The officers were President Andrew Moyer, Vice-President Alex Andrussier, Treasurer Leslie Danley, and Secretary/Webmaster Rich D'Antonio.

Speakers who came to speak to FMA and Grove College of Business this year included Nick LoPresti of Waddell and Reed; Jeff Embly of Orrstown Bank, and former CFO of Teleflex in an etiquette dinner to help students learn how to eat in a professional setting.

In November 2010, the John L. Grove College of Business hosted its annual Etiquette Dinner with the help of the FMA and the American Marketing Association. This event was sponsored by Northwestern Mutual Financial Network with the help of Lee Fortenberry.

We did not send members to the national FMA conference this year because it was after the spring semester ended.

FMA has a very positive outlook for next year and the future. One thing we are looking to do next year is to make FMA a national chapter so members of the Shippensburg Chapter will be recognized nationally. The 2011-12 officers are President Isabel Scott, Vice-President/Secretary Trisha McNeal, and Treasure/Webmaster Danielle Prior.

# Student Professional Organizations

## Human Resource Management Club

This past year was a flourishing one for the SHRM Chapter at Shippensburg University. The main goal of our chapter for this year was to bring in speakers monthly from a variety of human resource functional areas. We had representatives come in from companies such as Volvo, JLG Industries, F&M Trust, and a variety of other organizations to teach our members about the HR profession. In March, we were excited to bring back six past Shippensburg alumni who are now working in the Human Resource field to talk about their post graduation experiences. At the beginning of the year, our chapter's main achievement was participating in the Safe Harbour Walk in Carlisle. Twelve representatives raised money and walked/ran a 5K for the foundation. In the April, our chapter participated in the 2011 Northeast Regional SHRM Student Conference in Rochester, New York. Erin Thompson, Levi Crouse, Krista Dalby, and Andrew Miller competed against twelve other universities and colleges, placing second in the case competition and bringing home \$2,000 in winnings. This is the second year the chapter has placed second at the regional competition. Overall the 2010-2011 school year was a successful one for SHRM, achieving the SHRM superior merit award, and making an impact both at Shippensburg University and outside community.



## Etiquette Dinner: A must for every student

The annual fall Etiquette Dinner helps students, staff and faculty learn how to properly dine in a job interview or at a professional event. At the November 2010 event, Lynne Breil, founder and president of The Professional Edge, Inc., and her husband John Breil provided etiquette instructions from mingling before dinner to what to do at the end of dinner to help servers know you are finished.

Grove College of Business hosted the 2010 Etiquette Dinner with the help of the Financial Management Association and the American Marketing Association. The event was sponsored by Northwestern Mutual Financial Network with the support of Mr. Lee Fortenberry.

Student Andrew Moyer, president of Financial Management Association, reports, "We started off the meal eating French onion soup and salad. Next, Lynne showed how to properly eat chicken Parmesan and spaghetti without making a mess. We then learned about international dining from John, who taught us all how to pick up and eat M&M's with chopsticks. The dinner was finished off with chocolate mousse."

Andrew reports, "Everyone learned a lot and had a great time. This is something that all students should do at least once. It will help them in life and in the professional world and put our business students a step above the rest."

## Institute of Management Accountants

For the first time in three years, the IMA was able to hold events during 2009-2010. In the fall semester we participated in a plant tour of the Shippensburg facility of Volvo Manufacturing. Volvo hires tons of Ship grads, and they were extremely welcoming to provide us with a plant tour and a presentation of their business and some job positions they typically look to fill with college grads. Most of the people giving us our tour were actually Ship grads.



The IMA and Dr. Patricia Patrick hosted the Pennsylvania Gaming Control Board who provided an excellent presentation to students at Grove Forum and invited us to tour their operation in Harrisburg. This is planned for Fall 2011.

The group also hosted Mary Braun from the Association of Government Accountants who spoke to members in March.

## Investment Management Program

Dr. Rim and three IMP students (Justin Ellsesser, Rich Fino, and Brenton Wanner) attended the RISE XI Symposium March 3-April 2, 2011 at University of Dayton (Ohio). This is its eleventh year competition among around fifty universities (mostly in the U.S. and Canada). In addition to participating in portfolio competition with official documents for all transactions and maintenance, students made a presentation before a panel of three judges regarding the IMP class history, investment philosophy and objectives, structure/operations, and performance (since its inception, last five and ten years). They did very well at the presentation and also participated in Program Display. Due to IMP class activities (Spring and Fall 2010), SU IMP was ranked the third in the large-cap Growth Investment Style (best result thus far).

## MIS Professional Association

The MIS Club's main purpose is to allow students an opportunity to gain an understanding of the role and importance of information systems in today's business world, to provide its members with networking opportunities and to become more involved in the community.

This year's members continue to volunteer and take part in the Shippensburg Senior Center Project, providing education to seniors in various aspects of using technology. The seniors appreciated our bi-monthly involvement.

In addition, the club invited various professionals from companies as guest speakers at our meetings. This year, we had speakers from Tyco Electronics, Microsoft, and Deloitte who shared valuable information and tips on surviving and advancing in today's competitive industries.

(Continued on page 16)

# Student Professional Organizations

(Continued on from page 15)

Members were able to express concerns and get answers to many questions. Each of our speakers provided valuable advice on networking and building necessary skills to be successful.

Also, the club participated in educational field trips visiting the Library of Congress and the Air & Space museum in Washington D.C., and Highmark's central Data Center in Harrisburg.



Dr. Dao, Scott Rudolph, Amelia Diana, Ryan Goodfriend, Shanna Nally, Leslie Danley, Rich Sopko, Nate Roth

## Supply Chain Management/Logistics Club

The Supply Chain/Logistics Club had an exciting 2010-2011 year in its fifth full year of operations. The goal of the club is to educate current and potential supply chain and logistics majors on what exactly goes on within the industry. Throughout the year the club hosted several guest speakers from companies including Exel, Daily Express, Target, Volvo and SKF Technologies. Club members toured several facilities such as Giant's Distribution Center, ES3, and Jacobson Companies Quaker Warehouse.

Every month the Council of Supply Chain Management Professionals (CSCMP) hosts a dinner that our students can attend to network with representatives of area companies and exchange contact information. Several of our students have secured internships and full-time positions from going to this dinner and making contacts.

Several members participated in the CSCMP College Challenge in Pittsburgh on April 7, 2011. The Ship team consisted of Zak Kern, Ethan Baskin, Kevin Donnelly, Chris Torrens, and Nick Bertino and was advised by Dr. Robert Setaputra. The students competed in a Jeopardy-like game consisting of thirty-five questions ranging from five to fifteen points per question. At the end of the final round the Shippensburg University was victorious over other top supply chain management schools such as North Texas and Akron. This was the first year that Shippensburg took first place in this competition.

## PwC Economist Speaks to Students

Anthony Curtis returned to campus in March to speak to students in Grove Forum. Curtis leads the New York metro transfer pricing practice for PricewaterhouseCoopers.

A senior economist in PwC's Global Transfer Pricing Services Group, Tony has twenty years experience conducting economic analysis for the firm. For eighteen years, he has specialized in the economics of inter-company pricing, including planning studies to help taxpayers determine appropriate transfer prices for future transactions, economic studies for use in the defense of transfer prices under examination, and economic analyses for Advance Pricing Agreement negotiations with the IRS and foreign tax authorities.

Mr. Curtis previously taught graduate courses in Business Economics and Money and Banking at Johns Hopkins University's Washington, D.C. campus. He has a MBA as well as a BBA with a concentration in Business Economics and Public Policy from The George Washington University and has completed several graduate classes in taxation at Fordham University.



## 2010 Career Expo

Dressed in their best business attire and armed with résumés in hand, more than 330 Ship students engaged with employers at the Career Expo held October 27, 2010 in ShipRec Center. The students networked with representatives of 56 participating companies and governmental agencies to learn about full- and part-time positions, internship opportunities, and career options and of course, to secure a great position.

A favored biennial event, the Career Expo is sponsored by the John L. Grove College of Business and was made possible through the efforts of Dr. Tony Winter, Ms. Melanie Lugo, Mr. Joe Lyons, and the rest of the college staff. Volunteers from our student professional organizations worked throughout the day to perform functions critical to the Expo's success including registration, marketing, decorations, and event teardown.



## Business Alumni Receive University Awards

### *Douglas K. Besch '95*

#### **Outstanding Young Alumnus Award**

Besch is a partner in KPMG LLP in its New York City office. He began in the firm's Harrisburg office right after graduation, progressing from a staff position to manager, then senior manager before leaving for New York to join the firm's Department of Professional Practices as a senior manager.

In April 2008, he accepted a two-year professional accounting fellowship with the United States Securities and Exchange Commission in Washington, D.C. In June 2010, he rejoined KPMG in New York as a partner.



As a student at Shippensburg, he was an officer in the Student Association and also served as the student representative on the university's Council of Trustees for two years. Since graduation, he has been a member of the Alumni Association board, the alumni golf committee and served as a phone-a-thon volunteer with the Shippensburg University Foundation.

### *Nathan N. Cost '02*

#### **Outstanding Young Alumnus Award**

Cost is senior proposal manager for General Dynamics Information Technology (GDIT) in its Frederick, Md., office, where he has combined his successful military and civilian positions. During two tours in Iraq as an Army officer, Cost held positions of leadership and responsibility that involved working closely with the local population. He was the officer in charge of an ammunition consolidation site and later was the fuel program advisor on the Ministry of Interior's Transition Team. The team implemented his fuel program that supported more than 350,000 Iraqi security forces.



As a civilian, he worked with Agility Defense and Government Services, where again his creativity and ability to implement plans led to increasing responsibility as projects of increasing value were assigned to him and he was promoted from a business development analyst to manager. He left Agility for a proposal manager position with Stanley Associates in 2010 and shortly after assumed his present position with GDIT.

### *Richard Rovegno '79*

#### **2011 Jesse S. Heiges Distinguished Alumnus Award**

Rovegno, of Carlisle, is a Cumberland County commissioner and local entrepreneur. He has served as commissioner since 2000 and is in his third term. He was instrumental in securing the I-81 Coalition and serves on many boards, including the Cumberland County Aging Advisory Board, the Agriculture Extension Board, Agriculture Land Preservation Board and the Conservation District Board.

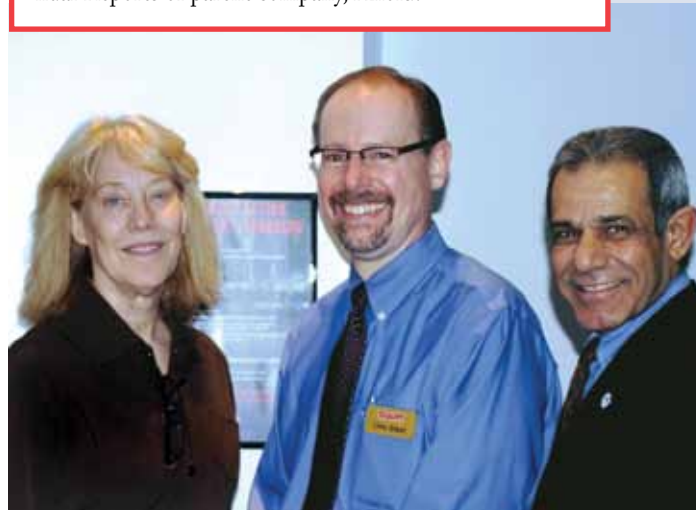


## Giant Named Company of the Year

The John L. Grove College of Business faculty selected Giant Food Stores as their "Company of the Year, 2011" because of Giant's positive economic contribution to the region, and the environmental and social impact from Giant's charitable contributions and involvement within local communities.

In April, Christopher Brand, public and community relations manager for Giant Food Stores, shared Giant's successes with a standing-room-only audience of business students and faculty in Grove Hall Forum. Mr. Brand's well-received presentation focused on successful aspects of Giant's public relations strategy to brand the company as "good corporate citizen" and creating significant brand equity within the region.

In addition, Giant Food Stores is a model for study for students as faculty teaching the business core courses create student assignments that center on Giant Food Stores. Assignments include discussions of Giant's activities, charting changes in stock price and looking at Annual Reports of parent company, Ahold.



Dr. Joanne Tucker, Christopher Brandt, and Dean Kooti

# Internships Fall 2010, Spring 2011, and Summer 2011

STUDENT	MAJOR	HOMETOWN	FIRM
Devin Acito	Entrepreneurship	Mechanicsburg	Integrity Hearing Aid Solutions, Inc.
Kayla Anderson	HRM	Johnstown	Kensworth - Motor Truck Equipment Company
Janelle Ayers	MIS	Martinsburg	Blair County Chamber of Commerce - Devorris Center
Blake Baumgardner	Marketing	Chambersburg	University Directories
Michelle Betz	MIS	New Cumberland	Johnson Control
Jonathan Bloch	Marketing	Center Valley	Putt U Miniature Golf
Jessica Boyle	MKT/Entrepreneurship	Glen Rock	The Conference Center at Shippensburg University
Erin Buksa	Marketing	Chambersburg	Finish Line
Megan Burnside	Marketing	York	TE Connectivity
Jason Campbell	Marketing	Lincoln University	Brandywine Valley Financial Services
Alyssa Caratozzola	Marketing	Fayetteville	Enterprise Rent-A-Car
Dale Carr IV	Accounting	Gardners	Parente Beard, LLC
Ryan Chapman	Marketing	Hatfield	Siemens Medical Solutions USA
Jennifer Claycomb	Entrepreneurship	Roaring Spring	PSECU
Heather Delp	Finance	Carlisle	Volvo Construction Equipment
Vincent DiMaio	MKT/Entrepreneurship	Allentown	Bard Townhouses
Devon Dombrowski	MIS	Lancaster	The Hershey Company
Cody Eberly	Marketing	Robesonia	Cumberland Area Economic Development Area
Darcy Frailey	MIS	Middletown	University Union & Student Archives (CUB)
Emily Fulton	SCM	Landisburg	Mechanicsburg Naval Base
Steven Gartner	Business Management	Dillsburg	Volvo Construction Equipment
Megan Ginter	HR Management	Newburg	Orrstown Bank
Cheryl Gratton	Management	Waynesboro	Hagerstown-Washington County Chamber of Commerce
Ryan Grigg	Accounting/MIS	Enola	Smith Elliott and Kearns & Company, LLC
Richelle Groff	Accounting	Strasburg	Rager, Lehman & Houck
Daniel Guthrie	SCM	West Lawn	Penske
Maria Harner	Marketing	Klingerstown	Conference Center @ Shippensburg University
Scott Henry	Accounting	York	Smith Elliott and Kearns & Company, LLC
Jenna Hershey	Accounting	Saltillo	Boyer & Ritter
Robert Hilton	Accounting	Greenville	Volvo Construction Equipment
Lindsey Hollenshead	HR Management	Ft. Loudon	Knovex, LLC
Jennifer Hoover	Accounting	Bedford	Moses, Johnson and Associates
Cody Hutchinson	MIS	Honey Grove	Giant Food Stores
Anthony Imperato	Marketing	Shippensburg	Giant Food Stores
Lauren Isch	Entrepreneurship	Glen Rock	Volvo Construction Equipment
Mark Janson	Accounting	Gettysburg	Letterkenny Army Depot
Brittany Kandler	Finance	Reading	Orrstown Bank
Stuart Keeler	Finance	Exton	TB Woods
Brittany Kelly	Marketing	New Cumberland	Volvo Construction Equipment
Cierra Knepp	Accounting	McVeytown	Kern and Company
Jorgan Landi	MKT/MIS	Shippensburg	Turner Hydraulics
Anthony Markey	MIS	Middletown	Select Medical Corp.
Jessica Marricone	Marketing	Jamison	Enterprise Rent-A-Car
Joseph Mator	Marketing	York	Orthopaedic & Spine Specialists
Jordan Middleton	Accounting	York	Giant Food Stores, LLC
Andrew Miller	Marketing/MGT	Zionsville	Volvo Construction Equipment
Jonathan Miller	Accounting	Keedysville, MD	Smith Elliott and Kearns & Company, LLC
Devin Miller	Accounting	Roaring Spring	Sheetz, Inc.
Sean Minford	Accounting	Glen Mills	SAP
Ashwini Palande	MIS	Harrisburg	Capital Blue Cross
Mili Patel	SCM	Lebanon	Frito Lay
Evan Pennypacker	Finance	Douglassville	Northwestern Mutual Financial Network
Amy Peteritis	HRM	Mehoopany	Victaulic
Adam Polynone	SCM	Womelsdorf	Sherwin-Williams Company
Zachary Raneiri	Finance	Birdsboro	LifePoint Financial Team and Independence Planning Group
Katie Reese	Marketing/MGT	Boonsboro, MD	SBDC, Shippensburg University

Kali Renninger	Management	Newburg	Volvo Construction Equipment
Paul Rhoads	Finance	Etters	Media Bins, Inc
Cameron Richardson	Management	Dillsburg	The Ripken Experience
Sarah Ripperger	Marketing	Emmaus	ArtsQuest
Christopher Saum	Finance	Aspers	TB Woods
Zachary Seaman	Management	Harrisburg	HB McClure Company
Matthew Sheaffer	MIS	Boiling Springs	Tyco Electronics
Spencer Showers	Management	Aspers	Keystone Fur Dressing, Ins.
Barry Sitler	Entrepreneurship	Wrightsville	Save Philly Stores
Ashley Sledzinski	Marketing/MGT	New Bloomfield	JME
Morgan Smedley	HR Management	Dillsburg	Volvo Construction Equipment
Gregory Smith	Finance	Landenberg	Orrstown Bank
Gregory Smith	Finance	Landenberg	Orrstown Bank
Richard Sopko	MIS	Nescopeck	Capital Blue Cross/Blue Shield
Lauren Speer	Marketing	Collegeville	Volvo Construction Equipment
Daryl Staley	Accounting	York	Boyer and Ritter
Kasey Steinour	Marketing	Aspers	Graphcom Creative
Katherine Stravinskis	Accounting	Lebanon	Hershey Company
Jeremy Straw	MIS	Dillsburg	Straw's Auto Center
Karen Strychowski	Business	Doylestown	Delaware Valley College
Stacie Stuart	Finance/SCM	Warren	International Marketing, Inc.
Stacie Stuart	Finance/SCM	Warren	International Marketing, Inc.
Eric Sulek	SCM	Glen Mills	Volvo Construction Equipment
Joseph Tarner	Finance	Fayetteville	Volvo Construction Equipment
Jennifer Templin	Marketing	Sinking Spring	The Conference Center at Shippensburg University
Nicole Tran	Marketing	Lancaster	Enterprise Rent-A-Car
Christopher Tremoglie	Marketing	West Chester	VerStandig Broadcasting
Elijah Trusty	Management	Media	Gap International Inc
Gabrielle Turano	Management	Chambersburg	Chambersburg Chamber of Commerce
Logan Vinson	SCM	Danielsville	Manitowoc Cranes
Evan Wabrick	Accounting	Mechanicsburg	Northwestern Mutual Financial Network
William Wentz	Marketing	Center Valley	State Farm Insurance
Brianna Yahner	Marketing	Patton	Sonic Drive-In

## On-Campus Recruitment by Industry

<p><b>Accounting</b>          Arthur Bell          Boyer &amp; Ritter          Brown Schultz Sheridan &amp; Fritz          Clifton Gunderson LLP          KPMG          Padden, Guerrini &amp; Associates, PC          ParenteBeard          PricewaterhouseCoopers          Reinsel Kuntz Leshar LLP          Rotz &amp; Stonesifer, PC          Rubino &amp; McGeehin, Chartered          Ryan and Wetmore          SF &amp; Company          Smith Elliott Kearns &amp; Company          Squire, Lemkin &amp; Company LLP          Stambaugh Ness PC</p>	<p><b>Banking</b>          Fulton Financial Corporation</p> <p><b>Camps</b>          Camp Canadensis</p> <p><b>Consulting</b>          Deloitte Consulting</p> <p><b>Education/Human Services</b>          Peace Corps</p> <p><b>Financial Services</b>          UFinancial</p> <p><b>Government</b>          United States Coast Guard          United State Marines Corps</p> <p><b>Insurance</b>          Highmark Inc.          Nationwide Insurance</p>	<p><b>Manufacturing</b>          Graham Packaging Company          Martin Sprocket          Techtronic Industries North America (TTI)          Tyco Electronics          Volvo</p> <p><b>Retail/Sales</b>          Acuity Brands Lighting          Enterprise Holdings          Target Corporation          Lowes          Penske          TNT          Walmart</p>	<p><b>Social Services</b>          T.W. Ponessa and Associates          Counseling</p> <p><b>Supply Chain</b>          ABF Freight          Daily Express          Exel</p>
---	--	---	---

## Armstrong, Gary

Professor of Management  
Information Systems,  
Academy of Business  
Disciplines Conference  
Director, Associate Editor  
in-Chief Journal of Business  
Disciplines, College of  
Business Technology  
Coordinator



### Academic Degrees

Master Certificate in IS/IT Project Management from Villanova University  
Master Certificate in Applied Project Management from Villanova University

### Recent Publications

Interviewing the Experts: Student Produced Podcast, Journal of Information Systems Education (co-authored with Dr. Joann Tucker)  
Profiling a Mind Map User: A Descriptive Appraisal - Journal of Instructional Pedagogies (co-authored with Dr. Joann Tucker)  
Podcast Interviews Bring Experts to the Classroom - Decision Sciences Journal of Innovative Education (co-authored with Dr. Joann Tucker)  
Achieving Learning Goals with Student-Created Podcasts - Decision Sciences Journal of Innovative Education (co-authored with Dr. Joann Tucker)

### Awards

2011 University Teaching Innovation and Pedagogy Spotlight Award  
Jeanne Strupeck Academy of Business Disciplines Outstanding Service Award

## Bailey, April

Assistant Professor of  
Information Technology and  
Business Education

### Academic Degrees

D.Ed., Penn State  
MBA and BSBA, Shippensburg  
University

### Research Areas

Research Interests - First-Year  
Students, Adult Students, Retention, Academic  
Advising

### Teaching Areas (classes taught)

Business Information Processing II  
Business Information Processing I  
Foundations of Business Administration  
Personal Selling  
Principles of Marketing  
Principles of Retailing

### Publications

#### Refereed Articles

Bailey, A. E. & Marsh, M. T. (2010). Transitioning Non-Traditional Students to an Undergraduate Business Program. *American Journal of Business Education*, 3 (8).

#### Refereed Proceedings from Presentations

Bailey, A. E., Tucker, J., & Armstrong, G. (2010). Designing an Integrative Teaching Approach of using a Business Plan Model to Introduce Business Concepts to First-Year and Transfer Students. *Academy of Business Disciplines National Conference*.

#### Student-Faculty Research

Bailey, A. E. & Collins, A. (2010, May). An Action Research Project with undergraduate Adult Business Students. Hendrick Best Practices for Adult Learners Conference, University Park, Pennsylvania.

#### Presentations

Bailey, A. E. (2010, November). Using Action Research as a Methodology for your Dissertation. Invitational lecture given to doctoral students at Pennsylvania, Harrisburg.



### Professional Experience, Leadership & Service

Reviewer – *Journal of Transformative Education*  
ITBE Faculty Search Chairperson  
APSCUF Representative Student Affairs Committee  
Grade Appeals Committee Member – Accounting, MIS, & ITBE Department  
APSCUF University Disciplinary Board Representative  
Faculty Advisor for Beta Gamma Sigma  
University Retention Committee Member  
Integration Committee - Member for First-Year Seminar Reporting  
Information Technology for Business Education Representative – Open House  
APSCUF Move-In Day Volunteer

## Beck, Joseph

Associate Professor of Management and Marketing

### Academic Degrees

Ph.D. Merage School of Business, University of California, Irvine, Management-Strategy  
MBA University of Oregon  
B.A. University of California, Berkeley, Asian Studies

### Intellectual Contributions

#### Compilation of Articles or Readings

Wiersema, M. F. & Beck, J. B. (2011). *Corporate Strategy* Edward Elgar.

#### Book Chapters

#### Non-Refereed

Beck, J. B. & Wiersema, M. F. (2011). "CEO Dismissal: The Role of the Broader Governance Context", *Handbook of Top Management Team Research*. Edward Elgar.

Beck, J. B. & Wiersema, M. F. (2011). "Introduction", *Corporate Strategy*. Edward Elgar.

### Honors-Awards-Grants

2011: Harry R. Frehn Faculty Research Fellowship  
Award John L. Grove College of Business.

## Becker, Wendy

Associate Professor of  
Management; Visiting  
Professor, MCI Management  
Law Center, Innsbruck,  
Austria

### Academic Degrees

Ph.D. Industrial-Organizational  
Psychology, Pennsylvania  
State University

### Research & Teaching Areas

International Human Resource Management  
Business & Society  
Industrial-Organizational Psychology  
International Personnel Development

### Recent Publications

Becker, W. S. (2011). Are you leading a socially responsible and sustainable human resource function? *People & Strategy*, 34, 1, 18-23.



## Faculty Earn Research Excellence Award

Drs. Wendy Becker, Jerry Carbo, Ian Langella received the 2010 Elwood F. Holton III Research Excellence Award from the Academy of Human Resource Development. It was awarded for their refereed article entitled "Beyond Self-Interest: Integrating Social Responsibility and Supply Chain Management with Human Resource Development" published in *Human Resource Development Review*.

Becker, W. S., Dale, W. M., & Pavur, E. J. Jr. (2010). Forensic science in transition: Critical leadership challenges. *Forensic Science Policy & Management: An International Journal*, 1, 1-10.  
Becker, W. S. (2010). Ethics and human resources: An exercise involving new employees. *Journal of Human Resource Education*, 4, 4, 26-34.  
Becker, W. S., Carbo, J. A. II, Esq., & Langella, I. M. (2010). Beyond self-interest: Integrating social responsibility and supply chain management with human resource development. *Human Resource Development Review*, 9, 2, 144-168.  
Becker, W. S. (2010). Self-directed work teams. *Human Resource Encyclopedia*, Pfeiffer.  
Bagyi, J., & Becker, W. S. (2010). Employment discrimination. *Human Resource Encyclopedia*, Pfeiffer.  
Ruud, J. K., & Becker, W. S. (2010). Employment-at-will. *Human Resource Encyclopedia*, Pfeiffer.

### Recent Consulting Projects

Northeast Regional Forensic Laboratory  
Washington D.C. Consolidated Forensic Laboratory  
Massachusetts State Police  
New York City Police Department

### Professional Experience, Leadership & Service

Journal editor; Board membership;  
Volvo Charitable Board Committee Member  
American Psychological Association Board of Professional Affairs  
Editor, *The Industrial Organizational Psychologist (TIP)*  
Editorial Board, *Journal of Business and Psychology (JBP)*

### Professional Reviewer:

Academy of Management  
Academy of Management Journal  
Academy of Management Learning and Education  
Group & Organizational Studies  
Lawrence Erlbaum Press  
Sage Publications  
Society for Industrial and Organizational Psychology  
University, College and Department Committees  
Honors Program Advisory Board  
Undergraduate Research Committee  
Commencement Ceremony Class Marshall  
University Curriculum Committee  
Board of Governors Scholarship Committee  
Shippensburg University Homecoming Committee  
Dean's Assurance of Learning Committee  
Center for Excellence in Scholarship and Teaching  
Committee

## Benton, James

Associate Professor,  
Accounting and Finance

### Academic Degrees

Ph.D., Old Dominion University,  
Finance/International  
Business  
Juris Doctor, Georgia State  
University

Masters of Arts, Economics,  
Old Dominion University  
Master of Taxation, Georgia State University  
Master of Science in Personal Financial Planning,  
Georgia State University  
B.S. in Accounting and Finance, Northern Illinois  
University

### Research & Teaching Areas

Federal Taxation (Individual and Business)  
Personal Finance  
Personal Financial Planning  
Investments  
Portfolio Analysis  
Business and Commercial Law  
**Professional Experience, Leadership, Service**  
US Army JAG Officer, LTC (Retired).



Founder and Managing Member, Financial Literacy Academy, LLC (July, 2005 - Present).  
Serving on Financial Literacy Work Group for Frederick County Public School System. Assisting with the development and delivery of state mandated Financial Literacy requirements for grades 9-12.  
South Carolina Department of Education, Served on an Ad Hoc committee to explore and assist in drafting the policies regarding resources and standards for Financial Literacy initiative for K-12.

#### Certifications

Certified Financial Planner  
Georgia Bar  
Certified Public Accountant  
Personal Financial Specialist

#### Other

Outstanding mentor award, Old Dominion University, 2010.

## Bitner, Larry

*Professor of Accounting*

#### Academic Degrees

B.S.M.E. MBA, DBA –  
Accounting

#### Research Areas

Performance Measurement  
Earnings Management

#### Teaching Areas

Managerial Accounting & Cost Accounting

#### Service Activities

University Disciplinary Board  
Academic Master Plan Steering Committee  
LMS/LCMS Work Group: Reviewing and evaluating possible replacements for the Blackboard learning system.

MBA Grade Appeals Committee

MBA Committee

Accounting Grade Appeals Committee

DPAC Committee

Faculty Search Committee



## Carbo, Jerry

*Assistant Professor of Management and Marketing*

#### Academic Degrees

PhD Industrial and Labor Relations NY State School of Industrial and Labor Relations, Cornell University  
MILR NY State School of Industrial and Labor Relations, Cornell University  
JD The Dickinson School of Law of The Pennsylvania State University

#### Teaching Areas

Business and Society, Labor Relations, Employment Law, Organizational Behavior, Sustainable Management

#### Research Areas

Workplace Bullying, Labor Revitalization, Sustainability

#### Recent Publications

From Green to Sustainability: Information Technology and an integrated sustainable framework, JSIS (February 2011) Dao, Langella and Carbo  
Workplace Bullying: Developing a Human Rights Definition from the Perspective and Experiences of Targets. *Working USA* (September 2010) w/ A. Hughes

Beyond Self-Interest: Integrating Social Responsibility and Supply Chain Management with Human Resource Management. Socially Responsible HRM, Supply Chains and Sustainability, *Human Resource Development Review*, June 2010, w/ Becker and Langella

Carbo, J.A. (2010) Workplace Bullying and Collective Bargaining in Higher Education. APSCUF/PSEA Labor Conference

Houghton, J., Heames, J., & Carbo, J. A.. Perceived Leadership Style: A Moderator of Workplace Bullying. *Association of Employment Practices and Principles, CERR Conference Chicago*.

#### Professional Experience/Leadership

Ship APSCUF Executive Committee Member, APSCUF State Wide Legislative Assembly, Member WV State Bar

#### Consulting

Workplace Harassment numerous mid-size employers, Workplace Bullying, Staffing and HRP, Employee Rights, Labor Organizing

## Catania, Joseph

*Associate Professor in Management Information Systems*

#### Academic Degrees

Ph.D. Information Systems,  
New Jersey Institute of Technology

M.S. Computer Science  
New Jersey Institute of Technology

B.S. Electrical Engineering, Rutgers University

#### Research and Teaching Areas

Business Systems Analysis and Design, Project Management, Management Information Systems, Information Analysis, Information Technology and Business Operations

#### Recent Publications and Presentations

Catania, J. and Armstrong, G. "The Effects of Project Manager Certification on the Triple Constraint" (in preparation)

Catania, J. and Armstrong, G. "Does Certification Equal Expertise?" (in preparation)

Catania, J., and Catania, T. "The Effects of Integrating On-Going Training for Technical Documentation Teams," *Journal of Technical Writing & Communications*, Volume 40, Issue 1, 2010, pp.77-97.

Catania, J. and Catania, T. *Driving Factors Affecting Employee Training*. Academy of Business Disciplines National Conference, November 2010, Fort Myers, Florida.

#### Honors and Awards

Recipient for the 2011 John L. Grove Summer Fellowship Award



## Chiou, Paul

*Associate Professor of Finance*

#### Academic Degrees

B.S., MBA, Ph.D.

#### Publications

"Stock Return, Risk, and Legal Environment around the World." *International Review of Economics and Finance* 19, 95 – 105, 2010.

"International Portfolio Management: Theory and Method" *Handbook of Quantitative Finance and Risk Management*, 221 – 234, 2010, Springer.

#### Editorial Service

Associate Editor, *Review of Pacific Basin Financial Markets and Policies*

#### Selected University Service

Shippensburg University Faculty Tenure Committee Chair, Department Academic Performance Committee  
Shippensburg University Curriculum Committee  
Shippensburg University Research Advisory Committee  
Shippensburg University Library Committee  
Advisor, Financial Management Association – Shippensburg University Chapter  
College of Business Course Assessment Committee - Shippensburg University  
Search Committee of Finance Faculty  
Search Committee of Management Information System Faculty  
Search Committee of Assistant Director of Athletics



## Coolsen, Michael

*Associate Professor of Marketing*

#### Academic Degrees

Ph.D. in Social Psychology,  
University of North Carolina at Chapel Hill

M.S. in Psychology,  
Shippensburg University

B.A. in Engineering, Lafayette College

#### Teaching Areas

Marketing Research, Sports Marketing, Relationship Marketing, Principles of Marketing, & Consumer Behavior

#### Selected Research Areas

Interdependence between consumers and brands

#### Selected publications

Coolsen, M. K. (2005). Brand loyalty conceptualized as an interdependence process. *Business Research Yearbook*, 12 (2), 611-614.

Coolsen, M. K., Brandt, M. L., & Herbst, K. C. (2006). The application of a mutual cyclical growth model of romantic relationships to investigate consumer brand commitment. *Published abstract in the proceedings of the Academy of Marketing Science Annual Conference*.

#### Selected publications

Coolsen, M. K., Kumashiro, M., & Quesenberry, K. A. (2010). Not just the best years of my life: personal growth in higher education. *Journal of International Business Disciplines*, 4 (2), 1-15.

Kumashiro, M. & Coolsen, M. K. (2011). The Michelangelo Phenomenon: Longitudinal Assessment of Effects of Partner affirmation on Personal and Relational Well-Being. *Published abstract in the proceedings of the Society for Personality and Social Psychology 2011 Conference*, San Antonio, TX.

#### Selected manuals and supplements

Coolsen, M. K. (in press). Video Guide for Kotler & Armstrong's Principles of Marketing (14th Edition). Pearson Prentice Hall.

Coolsen, M. K. (2009 & 2011). *Instructors Manual for Marketing: Real People, Real Choices* (6th & 7th Editions) Pearson Prentice Hall.



## Dao, Viet

*Associate Professor, Management Information Systems*

#### Academic Degrees

PhD in Management Information Systems,  
University of Oklahoma

MSc in Information Systems,  
University of Leeds, UK

BSc in Electrical Engineering, Hanoi University of Technology, Vietnam.

#### Research Areas

Business and sustainability value of IT; IT and Innovation Management; Virtual Team and Distributed Work

#### Teaching Areas

Teaching Areas: Management Information Systems; Technology and Innovation Management; Web Development

#### Publication

Dao, V., Langella, I., & Carbo, J. (2011). From Green to Sustainability: Information Technology and an Integrated Sustainability Framework. *Journal of Strategic Information Systems*, 20 (1), 63-79.

Dao, V. (in press, 2011). Impacts of IT Resources on Business Performance Within the Context of Mergers and Acquisitions. *Journal of International Technology and Information Management*.



## Professional Experience, Leadership, Service

Journal editor; Board membership; University, College and Department Committees; etc.

## Kohn, Jonathan

Professor of Supply Chain Management

### Academic Degrees

B.S.E.E. M.S.E.E., M.S.I.E.  
Ph.D. – I.E.

### Teaching Areas

Supply Chain and Operations Management

Quality Management

Decision Making and Information Management

### Research Areas

Strategic Logistics Management

Econometrics

Structural Equation Modeling

Housing Market Behavior

### Research

Spillan, J. E., Kohn, J. W. , & McGinnis, M. A. (in press, 2010). A Study of Logistics Strategies in Small Versus Large Manufacturing Firms. *Journal of Transportation Management*.

Kohn, J. W. & Bryant, S. K. (in press, 2010). Factors leading to the U.S. housing bubble: a structural equation modeling approach. *Research in Business & Economics Journal*.

Kohn, J. W. & Bryant, S. K. (in press, 2010). Modeling the U.S. Housing Bubble: An Econometric Analysis. *Research in Business & Economics Journal*, 2, 113-125.

### Service Activities

Development of Supply Chain Management major

Development of Logistics Management major

Revision of Logistics management and Supply Chain Management curriculum

Faculty Search Committee

Department Assessment Committee

MBA Committee

Department Accreditation Committee

Supply Chain Management Advisory Council



## Langella, Ian

Associate Professor of Supply Chain Management

Ph.D. Management. University of Magdeburg, Germany

M.A. Management. University of Magdeburg, Germany

B.S. Major in Nautical Science.

Minor in Physical Sciences.  
Maine Maritime Academy

### Research and Teaching Interests

Sustainable Operations Management, Closed Loop Supply Chains, Responsible Supply Chain Management, and Interdisciplinary Sustainable Management. Over ten years of full-time teaching experience and has taught undergraduate, graduate, and executive business classes covering a broad spectrum of quantitative management topics for four different universities.

### Recent Selected Publications

Langella, I.M., Zaroni, S. (2011) Eco-efficiency in Logistics: A Case Study on Distribution Network Design. *International Journal of Sustainable Engineering* 4(2): 115–126.

Dao, V., Langella, I.M., Carbo, J. (2011) From Green to Sustainable: Information Technology and an Integrated Sustainable Value Framework. *Journal of Strategic Information Systems* 20: 63–79.

Becker, W.S., Carbo, J.A., Langella, I. M. (2010) Beyond Self-Interest: Integrating Social Responsibility and Supply Chain Management With Human Resource Development. *Human Resource Development Review* 9(2):144–168.



Gunkel, M., Schlaegel, C., Langella, I. M., Peluchette, J.V. (2010) The Influence of Personality on Career Decisiveness of Business Students: An Empirical Comparison between Chinese, German, U.S. Students. *Personnel Review* 39(4): 503-24.

### Recent Selected Presentations

Alternative approaches for modeling stochastic yields for the remanufacture-to-order problem: Testing validity on real data and exploring decision sensitivity, presented 4 November 2010 at the Tenth Annual International Closed Loop Supply Chain Workshop in Montreal, Canada. (Invited).

### Selected Service Activities

Editorial Board Member, *International Journal of Business Performance and Supply Chain Modelling*

Cabinet Board Member, Council of Supply Chain Management Professionals (CSCMP), South Central Pennsylvania Roundtable

### Referee Activities

*Journal of Operations Management*

*International Journal of Production Economics*

*European Journal of Operational Research*

*International Journal of Advanced Manufacturing Technology*

*Computers & Mathematics with Applications Information and Organization*

Springer Journals (new journal proposals)

Prentice Hall (new textbook chapters)

Netherlands Laboratory of Lifelong Learning (grant proposals)

### University Committees

International Education Council

Task Force on Living and Learning

Grants Administration Committee, Center for Faculty Excellence in Scholarship and Teaching

Membership Committee, Association of Pennsylvania State College and University Faculties

Campus Support for Teaching and Learning Committee, Center for Faculty Excellence in Scholarship and Teaching

Mobilization Committee, Association of Pennsylvania State College and University Faculties

Faculty Advisor, Alpha Phi Omega National Service Fraternity, Lambda Lambda Interest Group

### Departmental Committees and Service

Graduate & Undergraduate Grade Appeals Committee.

Departmental Professional Affairs Committee

Supply Chain Management Assessment Committee

Supply Chain Management Advisory Board

### Community Service Activities

Catechist (Religious Education Teacher), Our Lady of the Visitation Roman Catholic Church, Shippensburg

### Professional Memberships

Member, German Operations Research (GOR) Society  
Member, Catholic Scholars for Worker Justice (CSWJ)

### Recent Awards

Edward F. Ehret, Jr. Teaching Award 2010-11 from the John L. Grove College of Business, Shippensburg University.

Elwood F. Holton III Research Excellence Award 2010 from the Academy of Human Resource Development.

## Marsh, Michael

Professor, Management Information Systems

### Academic Degrees

Ph.D. Ohio State University,  
Management Science/MIS

M.S. State University of New York, Stonybrook, Applied Mathematics

M.S. U.S. Navy Postgraduate School, Computer Science

B.S. University of Nebraska, Mathematics



## Research & Teaching Areas

Computer Programming

Information Technology

Software Applications

Instructional Technology

Computer Security

### Publications

Marsh, M. T. (2011). *Microsoft Office 2010 Activities and Exercises* Pearson/Prentice Hall.

Bailey, A.E. & Marsh, M.T. (2010) "Transitioning Non-traditional Students to an Undergraduate Business Program" *American Journal of Business Education*, Aug, 2010

## Professional Experience, Leadership, Service

Academic Master Planning Committee

Assurance of Learning Committee

Department DPAC

Academic Affairs Assessment Team

Infrastructure and Lifecycle Review Committee

Technology Grant Review Committee

Academic Technology Review Committee

Emerging Technology Committee

President's Cabinet Academic Calendar Subcommittee

### Certifications

Certified Computer Forensic Examiner

Certified Network Defense Architect

Security + Professional Certification

Microsoft Certified Application Specialist

### Other

Editorial board member for the *Review of Business Information Systems* journal

## Neidigh, Robert

Assistant Professor,  
Finance and Supply Chain Management Department

### Academic Degrees

BSBA, Shippensburg University

MMM, Penn State University

PhD Penn State University

### Research & Teaching Areas

Supply chain management

Production scheduling

Math programming

Statistical analysis

### Recent Publications

Neidigh, R. O. (2010). Illustrating Normal Distributions to Students in an Introductory Business Statistics Course via Visual Basic Macros in a Spreadsheet Application. *Journal of Business Cases and Applications*.

Neidigh, R. O. & Shirley, A. (2010). Modeling Nonlinear Pick Rates in the Mini-Pick Process at an IBM Replenishment Plant. *Journal of Business Disciplines*.

Neidigh, R. O. & Harrison, T. P. (2010). Optimizing Lot Sizing and Order Scheduling with Nonlinear Production Rates. *International Journal of Production Research*.

## Professional Experience, Leadership & Service

University Curriculum Committee

### Reviewer - Textbook

2011: McGraw-Hill (International)

2010: Prentice Hall (International)

2010: Prentice Hall (International)

### Honors

2010: Supply Chain Management Professor of the Year  
Alpha Kappa Psi



# Faculty Activities 2010-2011

## Pan, Ming-Shiun

*Professor of Finance*

### Academic Degrees

PhD in Finance, University of Alabama

MA in Management Science, University of Alabama

BS in Business Administration, Fu-Jen Catholic University, Taiwan



### Research & Teaching Areas

Research interests are market efficiency, return anomalies, derivative securities, currency markets and exchange rates, and international market integration and efficiency.

Teaching areas include financial management, investments, applied company and equity analysis, and derivative securities.

### Recent Publications

"REIT Stock Splits and Liquidity Changes" forthcoming in *Journal of Real Estate Finance and Economics*, with G.-C. Huang and K. Liano.

"Autocorrelation, Return Horizons, and Momentum in Stock Returns" *Journal of Economics and Finance* 34 (3), July 2010, 284-300.

"The Operating Performance of REITs Conducting Open-Market Repurchases" *Journal of Real Estate Portfolio Management* 16, January-April 2010, 59-69, with G.-C. Huang and K. Liano.

### Professional Experience, Leadership, Service

Journal editor; Board membership; University, College and Department Committees; etc.

## Rim, Hong

*Professor of Finance*

### Academic Degrees

Ph.D. in Finance, Penn State University

### Research & Teaching Areas

International finance, foreign investments, relationships between foreign currency markets and financial markets, event studies.



### Publications in Journals and Proceedings:

"Impacts of the US Financial Crisis on Financial Markets in Asia: Empirical Study," *Proceedings of the Academic Business World International Conference*, pp. 58-64 (May 2011).

"Studies on the International Diversification," *Proceedings of the Academic Business World International Conference*, pp. 70-73 (May 2011).

"Study on the Dynamic Relationships between Stock Markets in the US and Asia," *Proceedings of the International Business and Economics Research Conference*, pp. 429-435 (Oct. 2010).

"Studies on the Dynamic Relationships between Financial Markets in the US and ASEAN Countries," *International Business and Economics Research Journal* Vol. 9(8), 1-6. (August 2010; ISSN 1535-0754).

### Presentations:

"Impacts of the US Financial Crisis on Financial Markets in Asia: Empirical Study," a paper presented at the **Academic Business World International Conference** (Nashville, TN; May 2011).

"Studies on the International Diversification," a paper presented at the **Academic Business World International Conference** (Nashville, TN; May 2011).

"Study on the Dynamic Relationships between Stock Markets in the US and Asia," a paper presented at the **International Business and Economics Research Conference** (Las Vegas; Oct. 2010).

"Impacts of the US Financial Crisis in Integrated Financial Markets around the World," a presentation at Global Business Workshop (**Kyungpook National University**, S. Korea; June 2010).

### Professional Experience, Leadership & Service

2005-2011: Department chair, Finance and Supply Chain Management

### Finance Advisory Council

H.O.P.E Scholarship Committee

## Tucker, Joanne

*Associate Professor of Supply Chain Management*

### Academic Degrees

BSBA-Accounting, Bloomsburg University

MS-Organizational Dynamics, University of Pennsylvania

PhD- Strategic Management, Temple University



### Teaching Areas

Strategic Management  
International Business  
International Management  
Business and Society  
Strategy Implementation (Spring 2012)

### Research Interests

Technology Management  
Strategic Alliances

### Recent Publications

Peer-Reviewed Published Articles

The Acceptance of Electronic Journals by Business Faculty: An Adoption/Diffusion Approach

*Academy of Business Disciplines Journal* - Special Edition, 2011 Co-Editor

*Academy of Business Disciplines Journal* – Online journal, Editor-in-Chief

### Special Project

John L. Grove College of Business Company of the Year Award

Gloria Diodato Dean's Award, 2010-2011

### CoB Committees

CoB Integration Committee, Chairperson  
MBA Committee

MBA Grade Appeal Committee

CoB AOL Committee

CoB Search Committee for MBA/BIP Marketing director  
Computer Technologies Center Search Committee for Support Technician

## Watts, Allison

*Associate Professor of Management*

### Academic Degrees

BS, Bloomsburg University

MS, University of Pennsylvania

PhD, Temple University

### Recent Publications

"Scientific foundation, organization structure and performance of biotechnology firms", 2011, Allison D. Watts and Robert D. Hamilton III, *Journal of High Technology Management Research* (Forthcoming)

### Service-SU

Alumni Affairs Committee

Frederick Douglass Institute Executive Committee

International Education Council

National Association of Black Accountants Advisor

Reviewer – Academy of Management (Technology and Business, Policy, and Strategy Divisions)



## Grove College of Business Faculty Awards

Northwestern Mutual Financial Networking Advising Award	Dr. Michael Coolsen
Edward F. Ehret, Jr. Teaching Award	Dr. Ian Langella
Christopher Pruitt Service Award	Dr. Paul Chiou
Martin's Famous Pastry Shoppe, Inc. Research Award	Dr. Shelley Morrisette
Susquehanna Bank Dean's Award	Dr. Wendy Becker
The Stearn Dean's Award	Dr. Jerry Carbo
Capital Blue Cross Dean's Award	Dr. Angela Chang
Valley Quarries, Inc. Dean's Award	Dr. Viet Dao
Martin D. Babinec Dean's Award	Dr. Nathan Goates
Volvo Construction Equipment Dean's Award	Dr. Jonathan Kohn
Krausse Family Foundation, Inc. Dean's Award	Dr. Patricia Patrick
Gloria Diodato Dean's Award	Dr. Joanne Tucker
Dale Kann Faculty Student Research Award	Dr. Louise Hatfield
Harry R. Frehn Faculty Research Fellowship	Dr. Joseph Beck
Harry R. Frehn Faculty Research Fellowship	Dr. James Benton
John L. Grove Summer Fellowship	Dr. Joseph Catanio

# Small Business Development Center

The Shippensburg University Small Business Development Center (SBDC) is currently in its fifth year of operations, having joined the Pennsylvania Small Business Development Centers (PASBDC) network in January 2007. Our center has established strong pre-venture and general management consulting services and added an Environmental Management Assistance Program (EMAP) specialist in 2009.

Our center, along with the other seventeen university-based centers across the Commonwealth that comprise the PASBDC network, also utilize multiple specialized network consulting services including government procurement, technology commercialization, applied engineering services, international trade and veterans business assistance to serve our clients in south central Pennsylvania.

The SBDC serves Adams, Cumberland, Franklin and York counties and works collaboratively with partnering organizations across the region to avoid duplication of efforts and coordinate resources. We attempt to provide accessible service to clients in reasonable proximity to their locations through the use of consulting sites based at partnering organizations across the region.

Staff turnover at the SBDC opened up an opportunity to look at ways to best serve the eastern portion of our territory. In October 2010 we brought a new part-time business consultant on board to focus primarily on service provision in York and northern Cumberland counties. Working collaboratively with the JD Brown Center for Entrepreneurship at York College, we set-up an outreach office in their newly established business incubator located in an industrial building recently renovated for expanded York College facilities.

## Services Summary July 1, 2010– June 30, 2011

### Serving Adams, Cumberland, Franklin and York Counties

Number of Clients .....	365
Increase in Sales .....	4,378,557
Number of Workshops .....	50
Started a Business .....	38
Jobs Created .....	121
Consulting Hours .....	3,217
Capital Formation .....	\$1,699,321
Number of Workshop Attendees ...	682
Businesses Purchased .....	2
Jobs Saved .....	154

SBDC business consultants, as well as our regional chambers of commerce and economic development organizations, are continually receiving feedback from clients and members regarding the challenges and opportunities that entrepreneurs and small businesses face. Our regional economy has fared much better than many areas of the Commonwealth during the recent recession, but several large industries were forced to downsize or close due to economic pressures and unemployment remains at near double digit levels.

Higher unemployment, coupled with retired persons seeking to supplement their retirement income, has increased the number of individuals considering starting their own business. It seems, however, that many aspiring start-ups are coming to the table with less personal cash and equity and are having difficulty securing required financing. Even entrepreneurs with sufficient equity and sound business plans are experiencing difficulty in securing financing. New service-based ventures are most prevalent due to lower start-up and overhead costs but there is increasing competition within the consulting and freelance opportunity market.

Also significant to the SBDC is the increased emphasis placed on entrepreneurship by the Pennsylvania State System of Higher Education. Our SBDC has maintained close relationships with economic development personnel in the Chancellor's office and have, with the support of the Entrepreneurial Leadership Center, increased our programming and involvement in student focused activities on campus and around the region.

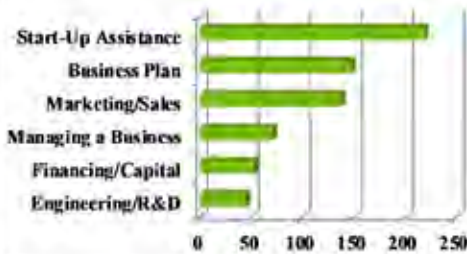
Below we have listed several regional outreach initiatives and activities the SBDC participated in during the year.

## Here to Help

In response to high unemployment in the region, Senator Richard Alloway hosted two events for aspiring entrepreneurs and job seekers, one in Franklin County and one in Adams County and actively sought SBDC participation. The events were supported and promoted by the local economic development corporations and PA Career Link centers.

SBDC staff set up displays and provided information and resources to attendees during the six-hour events. The events attracted very large turnouts (the Franklin county event was

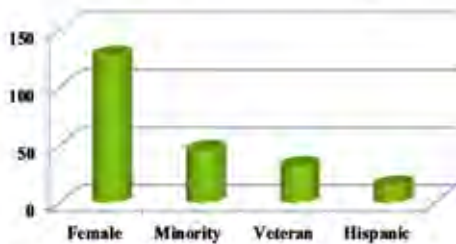
## Most Popular Consulting Topics



## Type of Business



## Business Ownership



## Investment Type



estimated by Senator Alloway's office at over 1,000 attendees) and these were two of the busiest outreach events that the Shippensburg SBDC has participated in.

Over 150 individuals engaged in conversations with SBDC staff manning the events on various topics related to researching ideas and starting businesses in Pennsylvania. Several attendees submitted RFCs seeking consulting assistance during the events and several others indicated they would be in touch with the SBDC at a future point for assistance with developing their business ideas and exploring the feasibility of starting their own businesses.

## Lemonade Day

To help increase awareness of, and interest in, entrepreneurship among young people in our area, the SBDC supported our Students in Free Enterprise (SIFE) organization and our Entrepreneurial Leadership Center (ELC) in their efforts to host Lemonade Day in Franklin County. F&M Trust was the lead sponsor of the event, providing funding support, materials for students and staff support. Lemonade Day is an event held each year in cities and towns across America. It is an experiential learning program that teaches youth how to start, own and operate their own business using a lemonade stand.

Schools, service organizations and community members in Greencastle, Mercersburg, Chambersburg and Shippensburg helped coordinate and manage the event, which occurred on May 1. At the Shippensburg Town Council meeting on April 19 a proclamation was made proclaiming May 1, 2011 Lemonade Day in Shippensburg. The event was not as successful as originally hoped, due to rainy weather and the difficulties involved in coordinating an event in relatively rural and small town settings.

## Franklin County - County-wide High School Entrepreneurship Competition

The SBDC helped to encourage entrepreneurship among our youth through participation in the inaugural County-wide Entrepreneurship Competition hosted by Chambersburg High School and involving 10th grade students from the six high schools in Franklin county. SBDC staff participated in planning meetings for the competition, served as the competition sponsor, assisted students who entered the competition, participated as part of the judging panel and presented awards to the winners.

SBDC staff members presented a five-hour introductory workshop for all participants in the competition at the county's Career and Technology Center. Twenty-six students, comprising fourteen teams, attended the training session where the focus was on an overview of the business planning process, including financial projections, and the importance of the pitch (oral presentation) as a significant component of the judging criteria. Students actively participated during the day with a workshop structure that alternated presentations of key components of the business planning process coupled with teams actively working on their ideas and plans. Perhaps the most interesting outcome of the day was the effusive response from county entrepreneurship teachers who found the workshop educational and inspiring and expressed the desire to incorporate the materials presented by the SBDC into their course curriculum.

Nine student teams submitted business plans for the final judging phase of the competition. Judges scored the written plans independently and then used both quantitative and qualitative factors in judging the students oral presentations on April 29. The Shippensburg University SBDC Director presented the awards to the winners of the competition at the award ceremony with students, parents and community members present.



SBDC Business Consultant Cheryl Young instructing the Entrepreneurship Competition students on financial projections.

## York County High School Business Planning Contest

York College of Pennsylvania, in conjunction with the York County Economic Development Corporation's Workforce Development program and supported by the SBDC, hosted an academic year long business plan writing workshop series. The workshop series was open to high school juniors and seniors from schools across York County. Each session focused on a specific area of a business plan so that students gained the basic tools and knowledge necessary to research an industry and write a business plan. The workshops culminated with a business plan competition that staff from the Shippensburg University SBDC helped judge on May 5.

## Meet the Lenders Event

On September 22 representatives from the SBDC participated as a "resource partner" in the Small Business Administration's "Meet the Lenders" event in Harrisburg. The SBDC met with approximately fifteen entrepreneurs and business owners at the event, providing them with information on services, answering specific questions, and encouraging them to avail themselves of SBDC assistance in their business ventures.

## YorKitchen – Shared Kitchen Incubator in York's Central Market

The York County Economic Development Corporation, with support from NutriCore Northeast, has constructed a shared kitchen incubator (YorKitchen). YorKitchen provides a unique service to residents of the City of York and the surrounding Central Pennsylvania area. Located in York's historic Central Market Annex, YorKitchen is a commercial kitchen available for rent to any food producer and extensive educational training and consulting assistance is available to all tenants. It is expected that the YorKitchen will not only stimulate small business growth in the city, county and surrounding area, but nurture it as well with entrepreneurial incubator services provided by the SBDC and other partners through the York County Entrepreneurial Support Alliance. The SBDC participated as a resource partner in the YorKitchen grand opening on June 18, 2011.

## Minority/Women Small Business EXPO

On March 23, 2011 staff from the Shippensburg SBDC set up a display and information booth at the annual Minority/Women Small Business Expo in Harrisburg. Speakers at the EXPO included Governor Corbett, Representative Tim Holden, Representative Ronald Waters and Harrisburg Mayor Linda Thompson. SBDC staff answered questions and provided information on resources and services to many attendees at the event.



Robin Burtner and Harrisburg Mayor Linda Thompson

## Global Entrepreneurship Week

The Shippensburg SBDC remains actively involved in Global Entrepreneurship Week in York County with the Entrepreneurial Support Alliance (ESA). Several SBDC workshops were offered during the week at various locations in York and SBDC staff also offered workshops on "Money and Funding your Business" and facilitated roundtable discussions at the annual Entrepreneurship Symposium hosted by York College. The Symposium attracted approximately seventy-five attendees ranging in age from high school students to senior citizens – all with an interest in entrepreneurship and small business development.

## Wilson College Lecture

At the request of faculty at Wilson College, a private liberal arts institution in Chambersburg, PA, SBDC staff provided a presentation on entrepreneurship and small business development to students studying business and entrepreneurship at the college on February 24, 2011. Included in the presentation was an overview of the PASBDC network core services as well as specialized programs available to entrepreneurs and small business owners.



Susan Cleckley (SBDC) and Lou Lavetan (York SCORE) present at the Food for Profit in York on Nov 19, 2010

## Food for Profit

Focusing on addressing the information needs of aspiring food entrepreneurs, the SBDC partnered with Penn State Cooperative Extension and York SCORE Chapter 441 to offer three sessions of the day-long program, "Food for Profit," to food entrepreneurs from across the region. The workshop provides an overview of how to start

and successfully operate a small food product business. The Food for Profit workshop takes you step by step through the information necessary to start and run a small food product business, especially directed to individuals who will be making and packing their products for resale through grocery stores, farm markets, or restaurants.

## NFIB– Small Business Day at the Capitol

Staff from the Shippensburg SBDC represented the PASBDC network at the National Federation of Independent Business (NFIB) Small Business Day at the Capitol on May 3, 2011. The day was very engaging with speakers and panel discussions focusing on issues of importance to small business owners including Marcellus Shale, Pennsylvania's Civil Justice Climate and 2011 legislative priorities. Many senior government officials participated in the event including DCED Secretary C. Alan Walker, House Majority Leader Mike Turzai, US Senator Pat Toomey and PA Education Secretary Ron Tomalis. Governor Tom Corbett provided the keynote address.



Governor Tom Corbett presenting at the Small Business Day at the Capitol.

It was an interesting and educational day for SBDC staff and offered an excellent opportunity for networking and building support for the PASBDC network.

## Honors Seminar in Innovation, Entrepreneurship and Creativity

Every two years Prof. Janet Ruby offers a special topics honors course at the university that focuses on innovation, entrepreneurship and creativity. The course was offered in the Spring 2011 semester. The course involves student teams, comprised of students from various majors across the university, developing a new product idea and virtually going through the steps involved in bringing a new product to market. SBDC staff, and a friend of the SBDC who is a copyright attorney, provided three, 2.5-hour classroom presentations during the semester long course. The topics covered included patents and copyright issues, market research and marketing plans, and developing a business plan.

## Etiquette for Success Academy

Etiquette for Success Academy is an annual spring event put on by the business fraternity Alpha Kappa Psi. The SBDC was approached this year with a request to provide a speaker on the topic of entrepreneurship. The event was held on April 14 and the SBDC provided a speaker who gave two presentations to a total of approximately fifty students.

The speaker covered some of the basic traits of an entrepreneur, issues that many entrepreneurs may face, the statistical prevalence of entrepreneurship among college graduates and the critical role that entrepreneurial thinking and action play in our society. We also shared information on the services available through the PASBDC network. Students were very engaged during the presentation, shared many good ideas and asked many good questions.

## New Center Developments

### JD Brown Center for Entrepreneurship Outreach Office

The J.D. Brown Center for Entrepreneurship is a hub for entrepreneurial activity at York College in York, PA. Founded in 2006, the Center is named for John "J.D." Brown, CEO of Blockhouse Furniture and a trustee of the college. In 2010, York College acquired and renovated an historic industrial building adjacent to campus and that new facility now provides a home for both the Entrepreneurship Center and York College's new Business Incubator.

The Center offers:

- A collection of scholars and practitioners who can help promote entrepreneurial success in today's global marketplace.
- Entrepreneurship education and resources for students, faculty, and business and community leaders to take advantage of.
- Collaborative work environment inside a state-of-the-art business incubator equipped with technology resources, shared conference rooms, training space, and office equipment.



J.D Brown Center for Entrepreneurship ribbon cutting

In January 2011, Shippensburg University SBDC officially established an outreach office at the J.D. Brown Center for Entrepreneurship and has a dedicated business consultant based there. The number of clients accessing SBDC services has been on the rise since the establishment of this outreach office.

Also in the spring of 2011 we began offering the First Step workshop in York. Prior to this we did not offer the First Step in York, but collaborated with SCORE to offer their five-part business planning series. Due to increasing demand, SCORE requested that we begin offering the First Step to fill the void between the collaborative workshop series. A senior vice-president from Susquehanna Bank has been participating in the delivery of the First Step in York, bringing many years of knowledge and insights from the world of business lending.

We continue to maintain excellent relationships with faculty at York College and beginning in the fall 2011 semester we will be engaging a York College student as an intern in our York outreach office.

### TechCelerator at Murata Business Incubator

A partnership between Ben Franklin Technology Partners and the Capitol Region Economic Development Corporation has resulted in the new "TechCelerator" program at the Murata Business Incubator in Carlisle, PA. The SBDC, who already had an outreach office at Murata, was approached prior to the launch of this initiative to see if we would commit to being a partner in this initiative. We readily agreed.

Eligible start-up companies in the TechCelerator receive \$1,000 in seed money and support services from Ben Franklin and the SBDC for an initial sixty day period to see if they can grow a good idea into a feasible business plan. Applications for the first round of TechCelerator were accepted through June 15, 2011. The first round of applicants was a success with three SBDC clients presenting their pitches to a panel of judges and an SBDC client, also a graduate student at Shippensburg University, taking home the \$10,000 first prize.

The SBDC is working with other TechCelerator partners to refine and enhance the process in the future so that it can provide the best package of services and supports to enable new technology companies to start, grow and prosper.



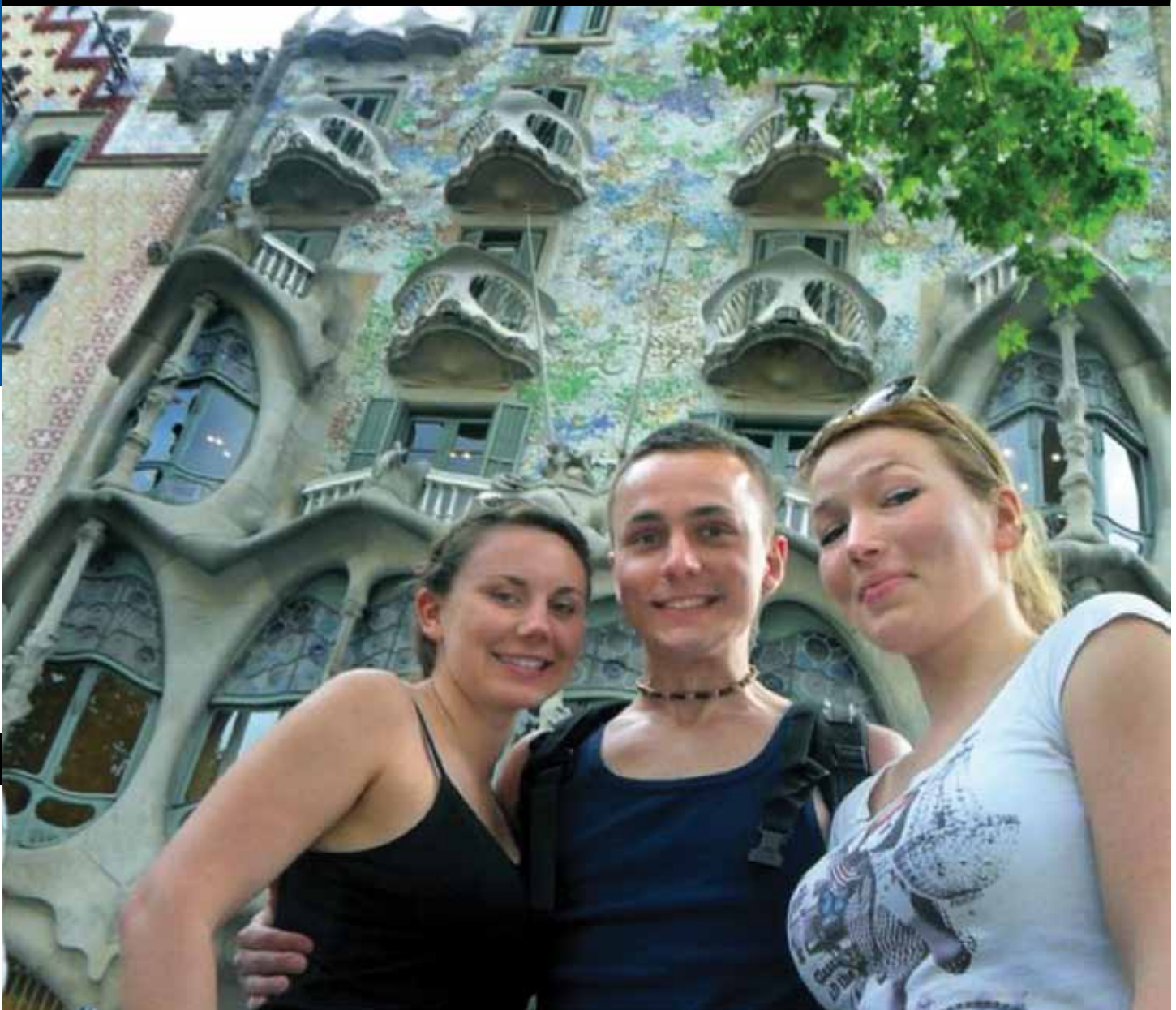
TechCelerator winner and SBDC Client Ollie Cooperwood (left)

### Pennsylvania State System of Higher Education (PASSHE) Initiatives

To strengthen SBDC connections across campus and provide more value to the university through in-reach programs to prospective entrepreneurs, the SBDC has an active partnership with the Entrepreneurial Leadership Center (ELC), established in 2009 with a three-year start-up grant from PASSHE.

The SBDC sponsored and participated in an ELC campus luncheon series featuring successful alumni entrepreneurs from Shippensburg University. This series was well attended by students and faculty and proved to be engaging and informative opportunities to learn from successful entrepreneurs.

The SBDC supported the ELC in the pilot of a campus-wide business plan competition in the Fall 2010 term. Twelve student teams submitted entries for the contest representing a wide range of business and social enterprise ideas. In the 2011-2012 academic year students from the university will have the opportunity to participate in the first PASSHE-wide business plan competition.



Laura, left, poses in front of one of Salvador Gaudí's masterpieces in Barcelona with Polish friends Wojciech and Natalia.

## My Semester Abroad in Poland by Laura Hallaway

Studying for a semester abroad in Poland has been one of the most rewarding experiences of my life. Not only did I learn a lot about Poland and Europe as a whole, but it has taught me to see the world in a completely different light.

One of the best perks of studying abroad is that you can take that opportunity to travel very cheaply. Since my time here I have had the opportunity to visit Germany, France, Spain, and many of the major cities in Poland.

During the Easter break I had decided to take part in a hitchhiking race organized by the school to Barcelona with the Polish exchange student Wojciech Jemiolo, who had attended Shippensburg fall semester 2010. This was a race with other students to see who could get to Barcelona the fastest by hitchhiking. We had made numerous friends along the way and had an exceptional time in the countries we passed through.

The school is always organizing something to keep the students occupied, whether it is trips to Krakow or paint ball in the courtyard, there is always something new to try.

Classes at the University have also presented me a new perspective in my education. The educational system here is different from classes at Shippensburg and teach you to be more independent in your learning. The teachers all speak excellent English and are always very engaging. My Polish language professor, Pani (Ms) Halina, was always taking the time out of her weekend to take us on trips to the Polish opera or the zoo.

The friendships I have made here are ones that I am confident will last me a lifetime. As an exchange student I am placed alongside students in the Erasmus program (students coming from all over the world to learn at a foreign university). I know that when I come back to Europe I will have a place to stay in almost every country, which is something I could never say before.

All in all, the food is great, the people are warm and welcoming, and the atmosphere is breathtaking. I think everyone that can study abroad, should study abroad.

Do widzenia (See you later)!

# Grove College of Business Spring Social 2011



(Above) The Volleyball Tournament was a hit with twelve teams competing.  
(Below) The student kickball huddle may have helped them defeat the faculty team!



In April, students enjoyed the inaugural Spring Social developed and coordinated by Richard Abel III, MIS major. The event brought College of Business students, faculty and staff together in an informal outdoors setting with games, competitions, and food. Some of the popular events from were the volleyball tournament among twelve teams, Goose Brothers Ice Cream, and the faculty vs. student kickball game that the students won. Students, faculty and staff enjoyed an afternoon of fun and fellowship in the sun!

## Homecoming 2010

The College of Business held their 1<sup>st</sup> Annual CoB Homecoming Reunion on Saturday, October 23, 2010 in Grove Hall Forum. Approximately fifty alumni and guests along with faculty and staff joined in the festivities. Dr. Joseph Hunt, dean of the College of Business from 1981-1991 attended the event (pictured front row, right).





## 3<sup>rd</sup> Annual Grove College of Business Golf Outing

30



144 golfers attended the 3<sup>rd</sup> Annual College of Business Golf Outing at Eagles Crossing Golf Club, Carlisle on May 6, 2011. This event is held annually for students, staff, faculty, alums, and other friends of the John L. Grove College of Business. Everyone enjoyed a great day of golfing, networking and fellowship!



Connect with us...and each other



[www.facebook.com/JLGCoB](http://www.facebook.com/JLGCoB)

Or visit our website at  
[www.ship.edu/business/](http://www.ship.edu/business/)

Give to the John L. Grove College of Business  
at [www.sufoundation.org/opportunities/funds](http://www.sufoundation.org/opportunities/funds)

Click on "College/Department"  
College of Business Associates Program Fund

## Send Us Your News

We'd love to hear from you. Please send your news to John L. Grove College of Business, Shippensburg University, 1871 Old Main Drive, Shippensburg, PA 17257-2299 or e-mail us at [business@ship.edu](mailto:business@ship.edu) or fax us at 717-477-4003.

Name \_\_\_\_\_

Address \_\_\_\_\_

City \_\_\_\_\_ State \_\_\_\_\_ Zip \_\_\_\_\_

Degree and Class Year(s) \_\_\_\_\_

E-mail \_\_\_\_\_

Phone (H) \_\_\_\_\_ (W) \_\_\_\_\_

Your Occupation \_\_\_\_\_

Name, Address of Employer \_\_\_\_\_

Recent News \_\_\_\_\_

\_\_\_\_\_  
\_\_\_\_\_  
\_\_\_\_\_  
\_\_\_\_\_  
\_\_\_\_\_



John L. Grove College of Business  
Shippensburg University  
1871 Old Main Drive  
Shippensburg, PA 17257-2299  
[www.ship.edu/business](http://www.ship.edu/business)

Shippensburg University of Pennsylvania, in compliance with federal and state laws and university policy, is committed to human understanding and provides equal educational, employment, and economic opportunities for all persons without regard to race, color, sex, age, creed, national origin, religion, veteran status, or disability. Direct requests for disability accommodations and other inquiries to the Office of Disability Services, Horton Hall 120, Shippensburg University, 1871 Old Main Drive, Shippensburg, PA 17257-2299, (717) 477-1329, [ods@ship.edu](mailto:ods@ship.edu). 11/11C-1200