

APPENDIX 7
16521 EXTERIOR LIGHTING

Exterior lighting at Shippensburg University is currently a compilation of different styles. We are trying to move towards a more uniform presentation and have adopted some standard lighting styles. Starting at the building, use a wall pack where appropriate. We have not adopted any particular type of wall pack, but the designer should look at other buildings in the area. Only Dark Skies approved units should be specified. Near the building, we have adopted a standard bollard light, Gardco F4BRM820, 42: 100MH BLP finish.

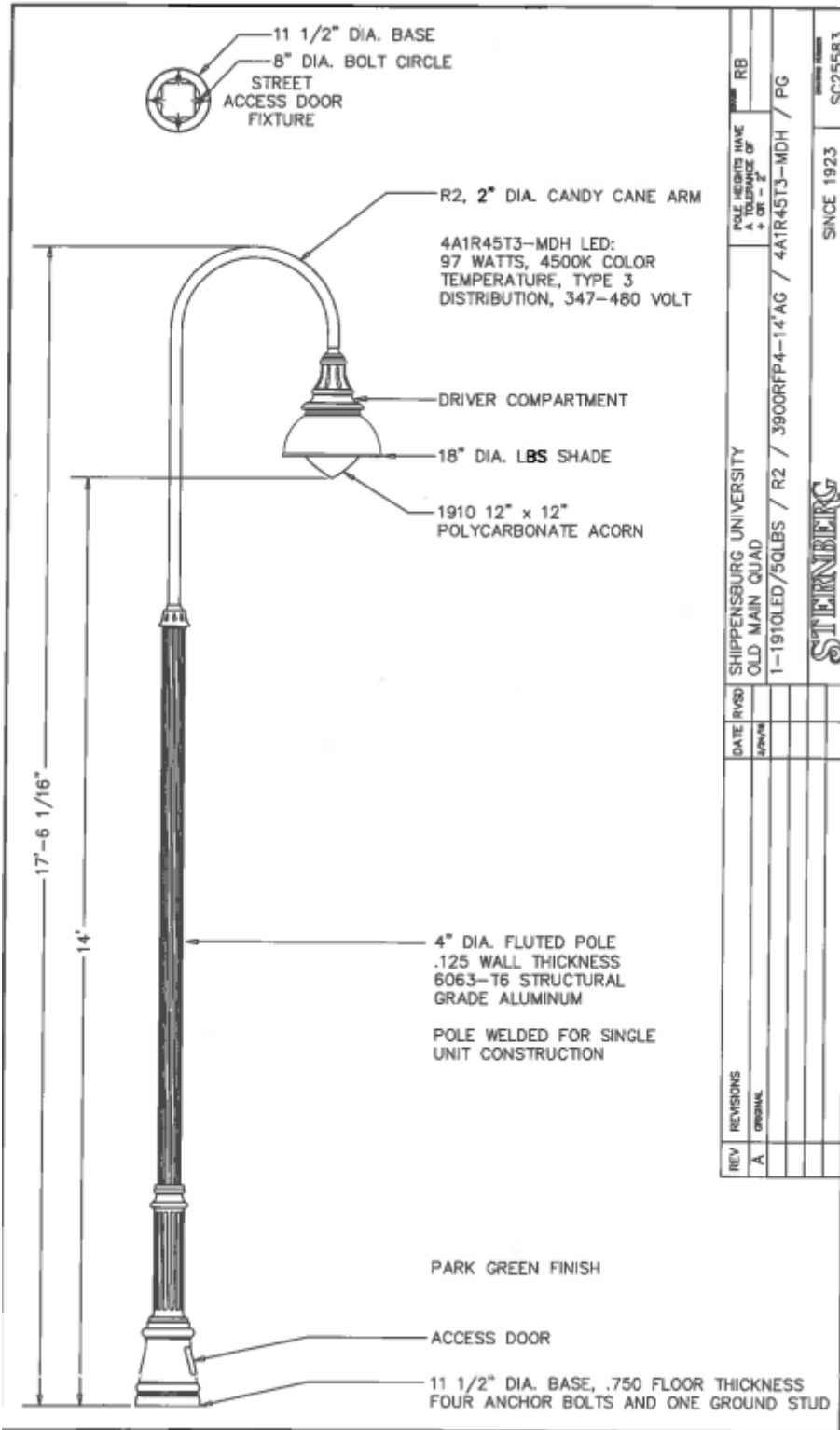


Standard Bollard Light.

For pedestrian lighting, we have adopted the Sternberg 1910 in green with one or two heads according to application.



Standard Pedestrian Light (New lights to be LED with shade per info below)



Standard light revised to LED with Shade

There are also just a few pedestrian lighting fixtures that are owned and maintained by Penelec. Any maintenance or relocation of these lights has to be done in cooperation with them. They also own the power cabling for these lights.



Typical GPU Pedestrian Light

For parking lot lighting, we have a mix of lights. In some instances we have direct buried fiberglass poles with metal halide heads as pictured below.



Direct Bury Pole for Parking Lot Lighting

In other circumstances we have had installations similar to the ones below with rectangular fixtures on concrete protected bases.

9/9/21

Appendix 7-3

Shippensburg University
Design Guidelines



Gilbert Parking Lot Light Fixture



Protected base at Gilbert Lot



PAC Commuter Lot Fixture



PAC Commuter Lot Lighting Base