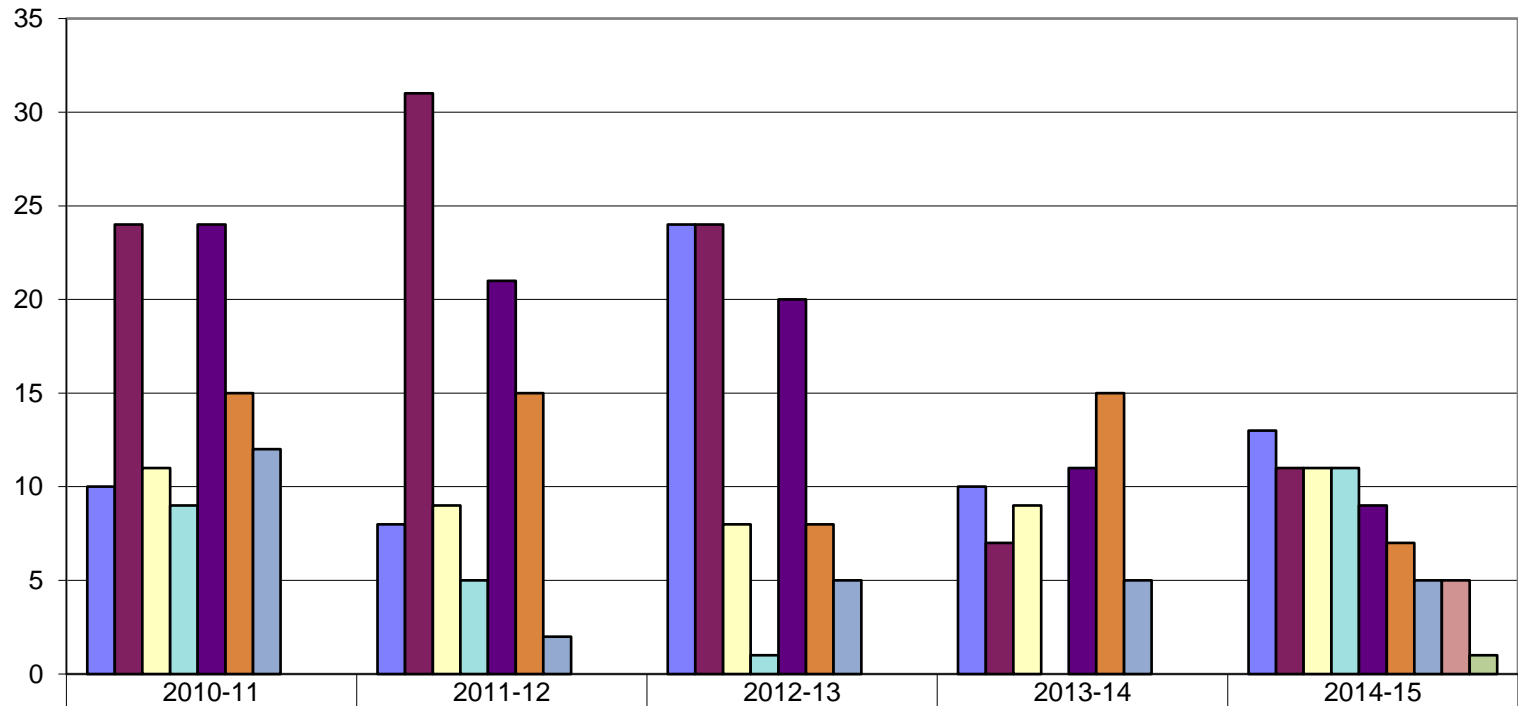


GRADUATE DEGREES



| | 2010-11 | 2011-12 | 2012-13 | 2013-14 | 2014-15 |
|-----------------------|---------|---------|---------|---------|---------|
| History | 10 | 8 | 24 | 10 | 13 |
| Reading | 24 | 31 | 24 | 7 | 11 |
| Communication Studies | 11 | 9 | 8 | 9 | 11 |
| Psychology | 9 | 5 | 1 | 0 | 11 |
| Education Admin | 24 | 21 | 20 | 11 | 9 |
| Public Administration | 15 | 15 | 8 | 15 | 7 |
| Computer Science | 12 | 2 | 5 | 5 | 5 |
| Science Ed | 0 | 0 | 0 | 0 | 5 |
| EI Ed Early Child | 0 | 0 | 0 | 0 | 1 |