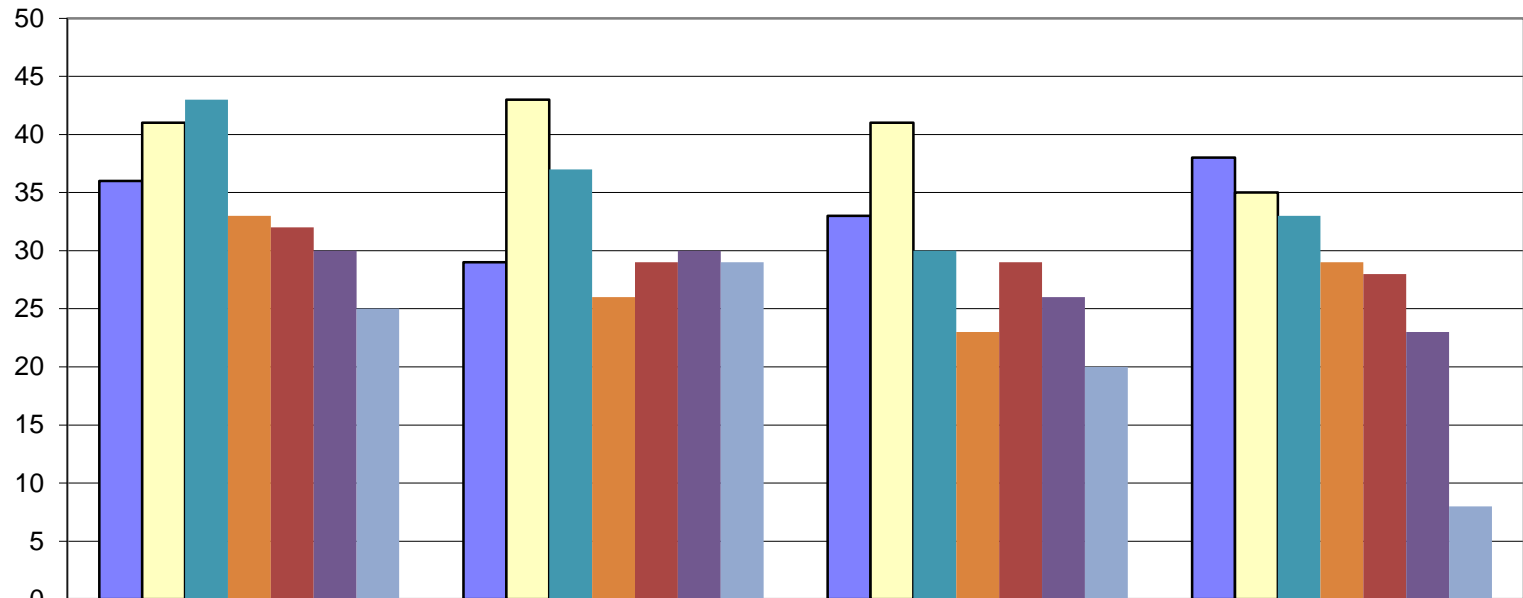


GRADUATE HEADCOUNTS



| | Fall 2008 | Fall 2009 | Fall 2010 | Fall 2011 |
|-----------------|-----------|-----------|-----------|-----------|
| Geoenv. Studies | 36 | 29 | 33 | 38 |
| Public Adm. | 41 | 43 | 41 | 35 |
| History | 43 | 37 | 30 | 33 |
| Biology | 33 | 26 | 23 | 29 |
| Psychology | 32 | 29 | 29 | 28 |
| Comm. Studies | 30 | 30 | 26 | 23 |
| Computer Sci. | 25 | 29 | 20 | 8 |