

Financial Assistance for the Academic Success Program

Students from Pennsylvania who demonstrate economic and educational need may qualify for financial assistance under the Act 101 legislation. Students who wish to be considered for the Academic Success Program should file the Free Application for Federal Student Aid (FAFSA) by March 1. Shippensburg University's Financial Aid Office is available to assist students with filing the necessary forms. The Summer Bridge Program is offered free of charge to students who qualify under the Pennsylvania Department of Education's (Act 101) guidelines.

Academic Success Program

306 Wright Hall
717-477-1134
E-mail: asp@ship.edu
<http://webspaceship.edu/asp>



1871 Old Main Drive
Shippensburg, PA 17257-2299
1-800-822-8028 or 717-477-1231
Fax: 717-477-4016 E-mail: admiss@ship.edu
www.ship.edu

Shippensburg University is an equal opportunity educational institution. Direct requests for disability accommodations and other inquiries to the Office of Disability Services, Horton Hall 120, Shippensburg University, 1871 Old Main Drive, Shippensburg, PA 17257-2299, 717-477-1329, ods@ship.edu. 6/08U-2400

Academic Success Program

(Act 101)



WWW.SHIP.EDU

Your Program for Success

The goal of the Academic Success Program (ASP) is to promote academic success and to build self-confidence with guided supportive services throughout the student's college experience. ASP has two major components: (1) the Summer Bridge Program, and (2) Academic Year Support Programs.

The Summer Bridge Program

The Summer Bridge Program provides a realistic orientation to the roles and expectations of a Shippensburg student.

Students selected to participate in this program can expect to receive the following benefits:

- An extended orientation to college life.
- A connection to the ASP faculty and staff.
- Guidance in utilizing the electronic resources required by the university, such as: e-mail, Blackboard, and the Student Information System.
- An introduction to the general education curriculum and the journey to major selection.
- Awareness of the university's academic policies and procedures.
- Increase student's awareness of institutional resources.
- An understanding of the ASP resources available throughout their college career.



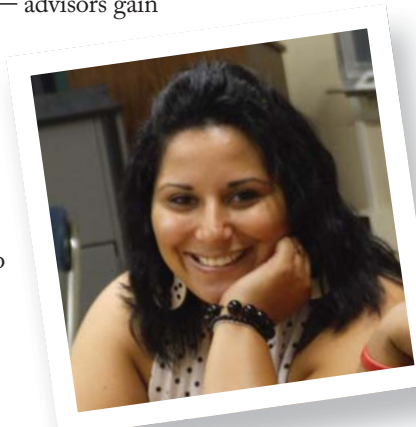
MENTORSHIP

Services Provided by ASP

The Academic Success Program provides a number of services to new and returning students during both the summer and academic year, including:

Academic Advising

Academic advising is one of the most important influences on students' collegiate experience. Through regular contact with students — whether face to face, through the mail, on the telephone, or through computer-mediated systems — advisors gain meaningful insights into students' academic, social, and personal experiences. Advisors use these insights to help students become part of the academic community, develop sound academic and career goals, and ultimately, to be successful learners.



Career Assessment/ Advising

Students entering college are often unsure about their long-term goals and tend to lack information about their academic or career options. Others may need some assistance in identifying their personal skills, interests, and abilities. The ASP faculty and staff will work with each student in planning their major and future career with the assistance of the Career Development Center (CDC).

Chi Alpha Epsilon (XAE)

Students have an opportunity to join a distinguished academic honor society while attending Shippensburg University. Chi Alpha Epsilon was formed to recognize the academic achievements of students admitted to colleges and universities through non-traditional criteria. Its purpose is to promote continued high academic standards, foster increased communication among its members, and honor academic excellence for those students admitted to college via developmental programs.

Financial Aid Counseling

The Financial Aid office prepares financial aid packages based upon financial needs as determined by the students' Free Application for Federal Student Aid (FAFSA). The ASP faculty and staff will conduct workshops in conjunction with the Financial Aid office to ensure students' understanding of their financial commitments.

First Year Experience Course

All ASP students enroll in a three-credit First-Year Experience course taught by faculty from the School of Academic Programs and Services. This course counts toward students' grade point average, financial aid progress, and credit count. It provides a structured introduction to higher education and Shippensburg University, applied learning strategies, and career and major exploration. The curriculum exposes students to proven strategies that will result in greater, academic, professional, and personal success.

Ongoing Counseling

ASP faculty and staff are available to discuss any concerns the student might be having adjusting to college, professors, roommates, homesickness, etc. Problems beyond the scope of the ASP faculty and staff will be referred to the Counseling Center. The University Counseling Center (UCC) provides individual, couples, and group counseling, crisis intervention, and psychiatric services for undergraduate and graduate students. The UCC is located on the first floor of Wright Hall.

Peer Leader Program

The ASP Peer Leader Program matches incoming students with academically successful ASP upperclassmen who will mentor and guide freshmen through their academic and social adjustment to college. The upperclassmen serve as role models, as people with answers to questions about the campus, the community, career, job opportunities, financial aid concerns, and academic scheduling. In general, Peer Leaders are students who care about helping freshmen to get through the first year.



Social/Cultural Activities

Throughout the summer and academic year, ASP provides social and cultural activities organized by ASP students. Past events have included: Novemberfest, Mardi Gras Celebration, Game Night, bowling, a trip to Washington D.C. and much more.

Study Hall/Study Groups

College students are expected to study two hours for every one hour they are in class. With this in mind, ASP offers organized study halls and study groups where students have the opportunity to study in an environment where they can work independently or in groups to review, process what they have been taught, prepare for exams, and where they can easily get assistance from the ASP faculty and staff.

Tutoring Referrals

The ASP faculty and staff works very closely with the Learning Center staff in providing content-based tutoring on a walk-in and appointment basis, learning strategies workshops, and learning specialist services. The Learning Center is located in the library.

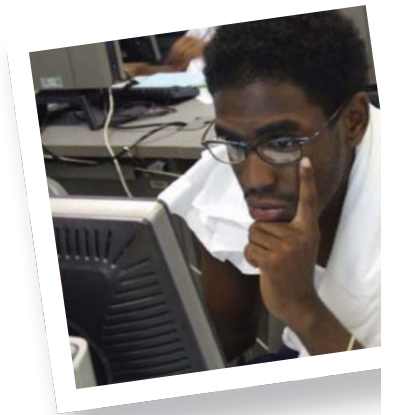
Academic Year Support Program

The Academic Success Program is designed to provide learning and special counseling services to facilitate success in meeting higher education goals.

The Academic Year Support Program is designed to further develop the overall preparedness of ASP students. Professional counselors (faculty) closely monitor assigned students to ensure they are on track and focused on academic and personal success. Counselors emphasize helping students build on the base of knowledge established during the summer program.

In return for the services provided by ASP, students agree to:

- Adhere to the attendance policies for all classes.
- Attend two or more ASP counseling sessions per semester.
- Attend sessions with the Learning Center as recommended.
- Follow through on recommendations and referrals by ASP faculty and staff.
- Accept intervention on behalf of faculty and staff should the student's behavior warrant it.
- Reach out anytime they need help to faculty, counselor staff, or others.
- Strive to perform their best academically by, including attending classes, completing assignments, meeting with professors, and using good time management.
- Comply with expectations and policies outlined in each course syllabi.
- Adhere to the policies as outlined in the student handbook, *Swataney*.



LEADERSHIP