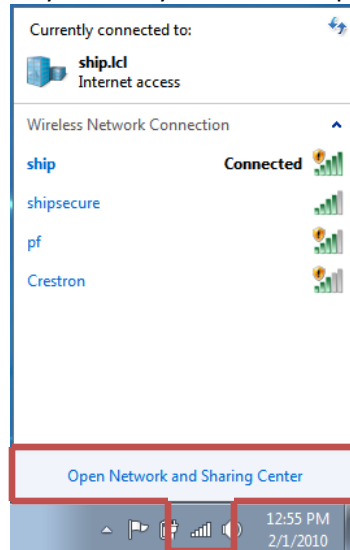
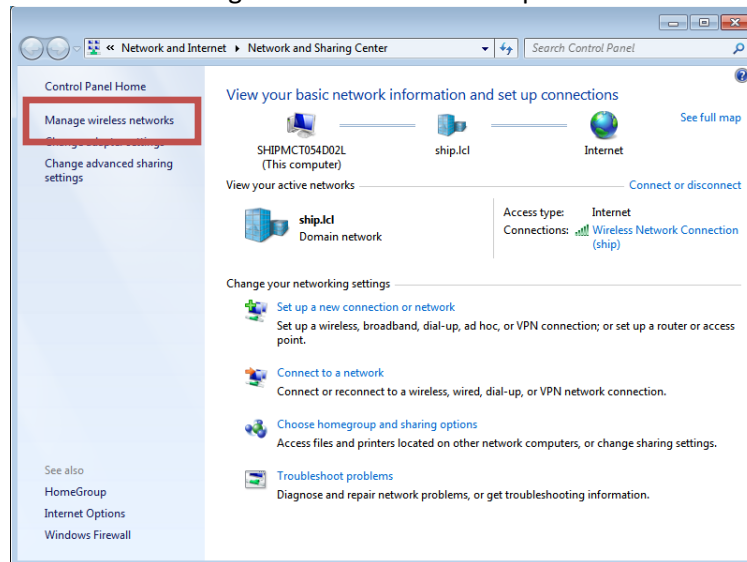


Shipsecure Access Windows 7

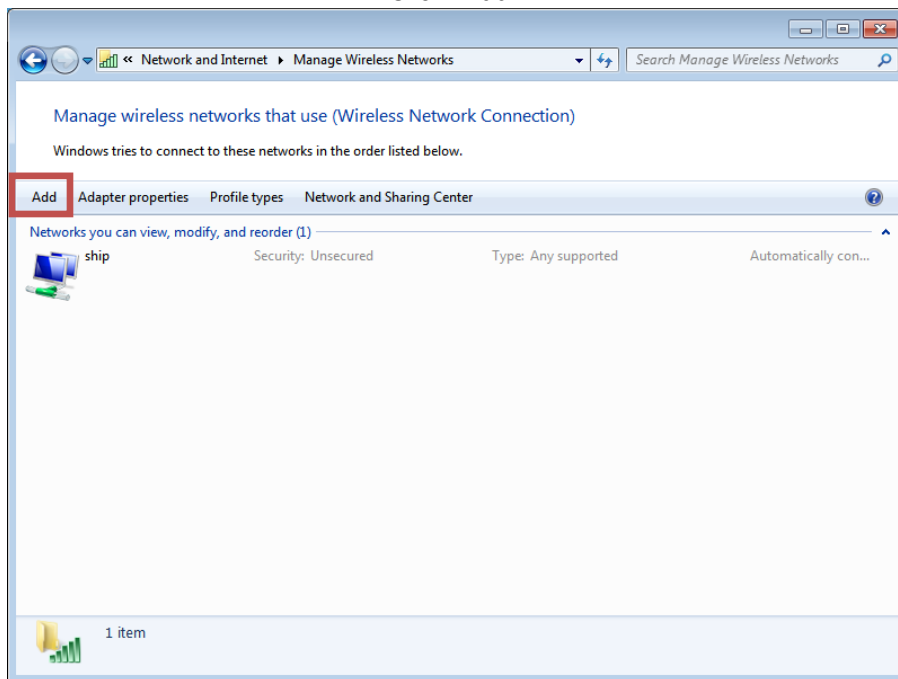
- Click the wireless network indicator in your system tray and select “Open Network and Sharing Center”.



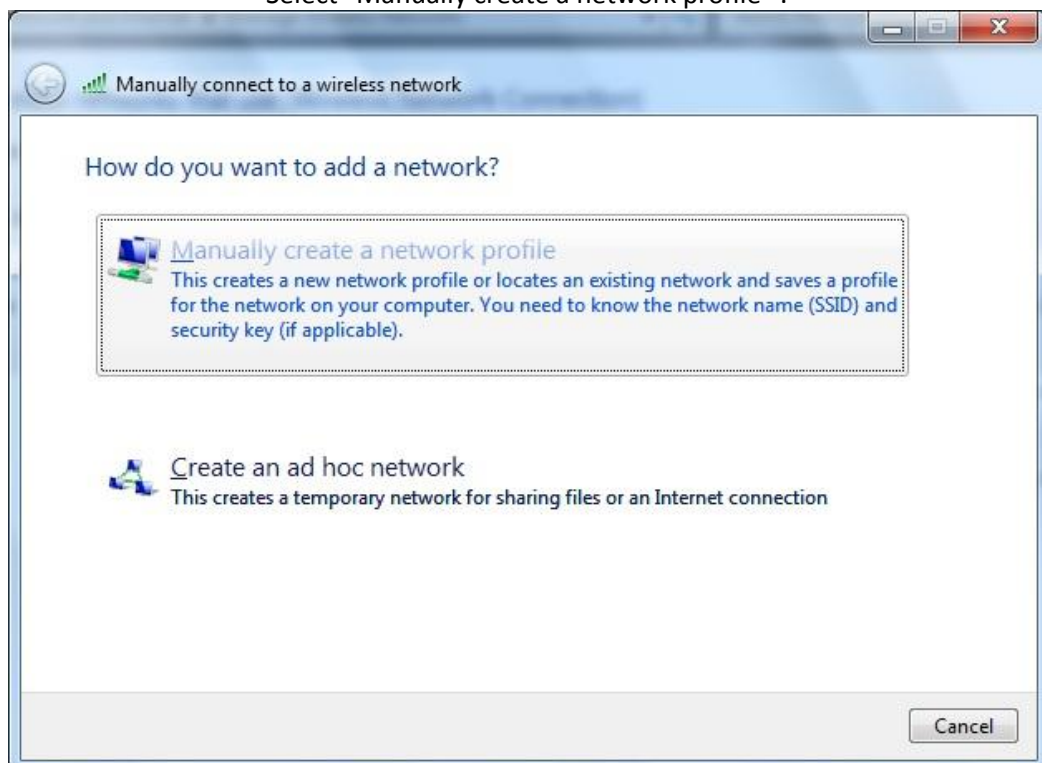
- Click “Manage wireless networks” top left corner.



- Click "Add"

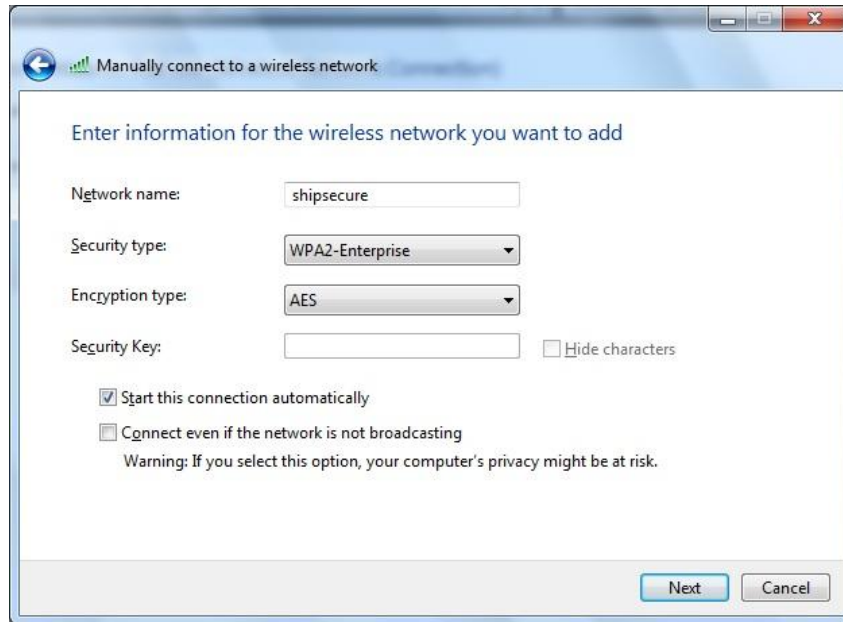


- Select "Manually create a network profile" .

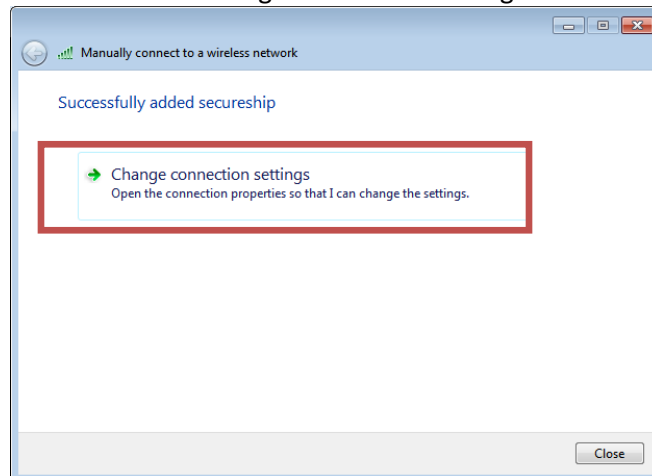


- Fill in the settings as follows:
 - o Network name: shipsecure
 - o Security type: WPA2-Enterprise
 - o Encryption type: AES
 - o Security Key: Leave Blank

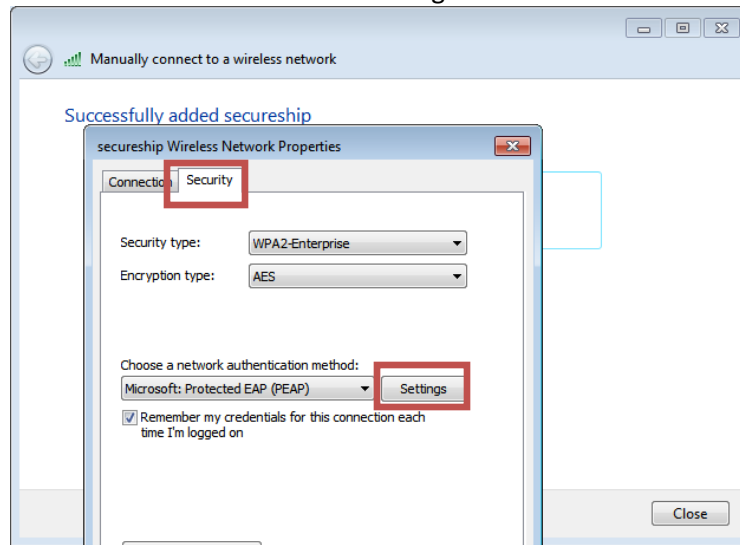
- Click "Next".



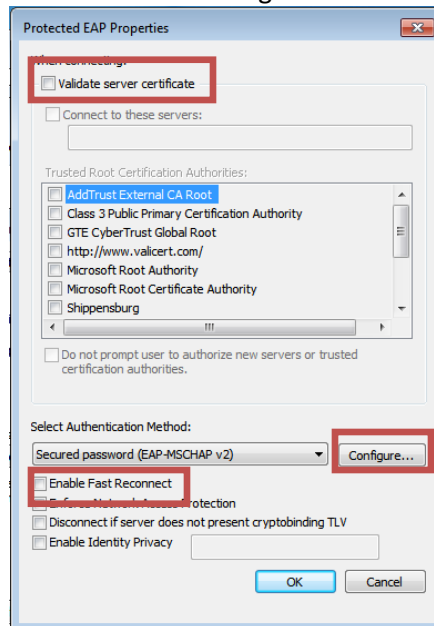
- Click "Change connection settings".



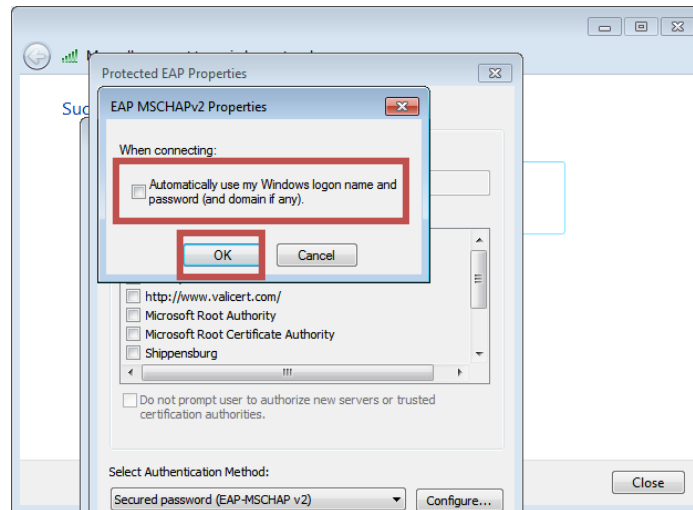
- Select the "Security" tab.
- Click "Settings"



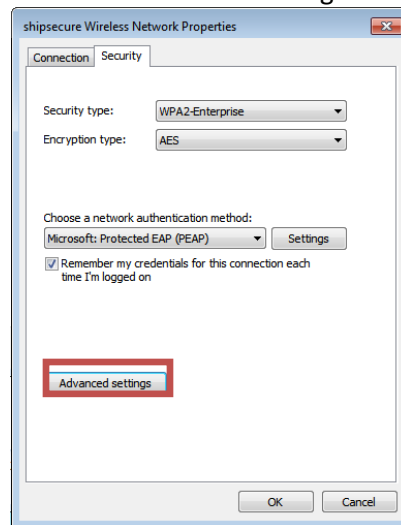
- Uncheck "Validate server certificate" and "Enable Fast Reconnect".
- Click "Configure".



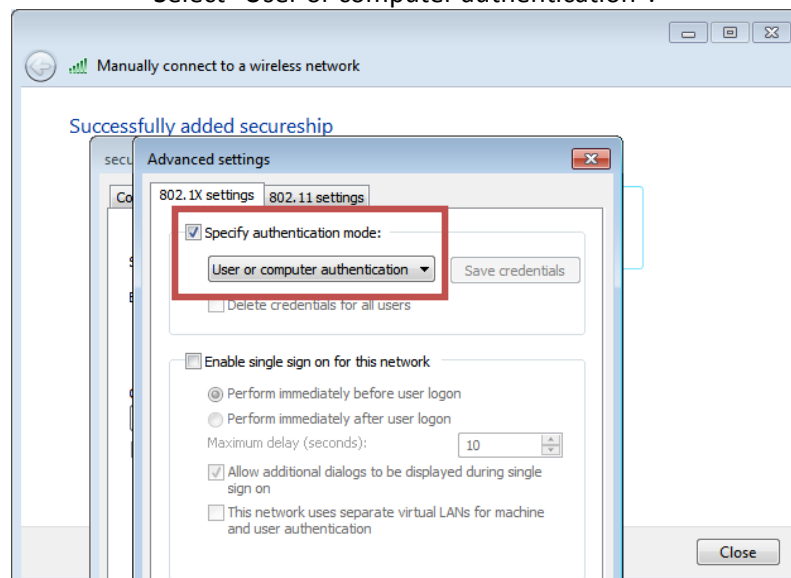
- Uncheck “Automatically use my Windows logon name and password...”.
 - Click “OK”.



- Click “OK” at the “Protected EAP Properties” window.
 - Click “Advanced settings”.



- Check “Specify Authntication mode:” .
- Select “User or computer authentication”.



- Click "OK" on the "Advanced Settings" window.
- Click "OK" on the "shipsecure Wireless Network Properties" window.
- Click "Close" on the "Successfully added shipsecure" window.

To connect to shipsecure:

- Click your wireless indicator in the system tray.
- Select "shipsecure" and click "Connect".
- Enter your Shippensburg ID (without "@ship.edu") and password.
- Click "OK".

